

Macchina

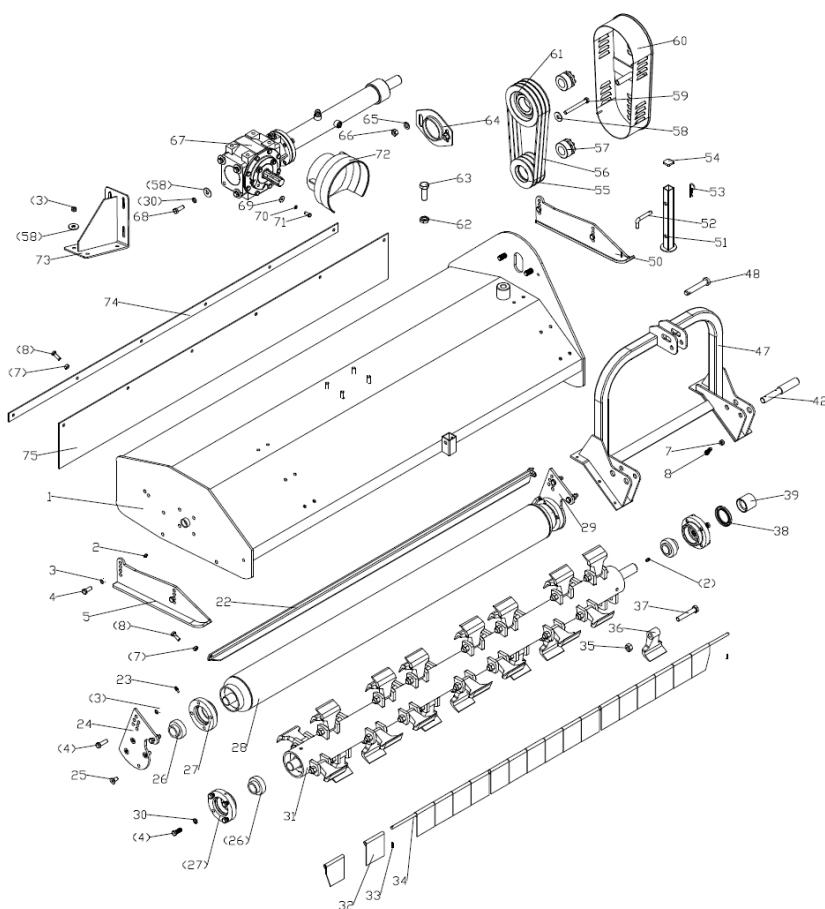
DPS



Sezione

1

## DPS\_MainAssembly

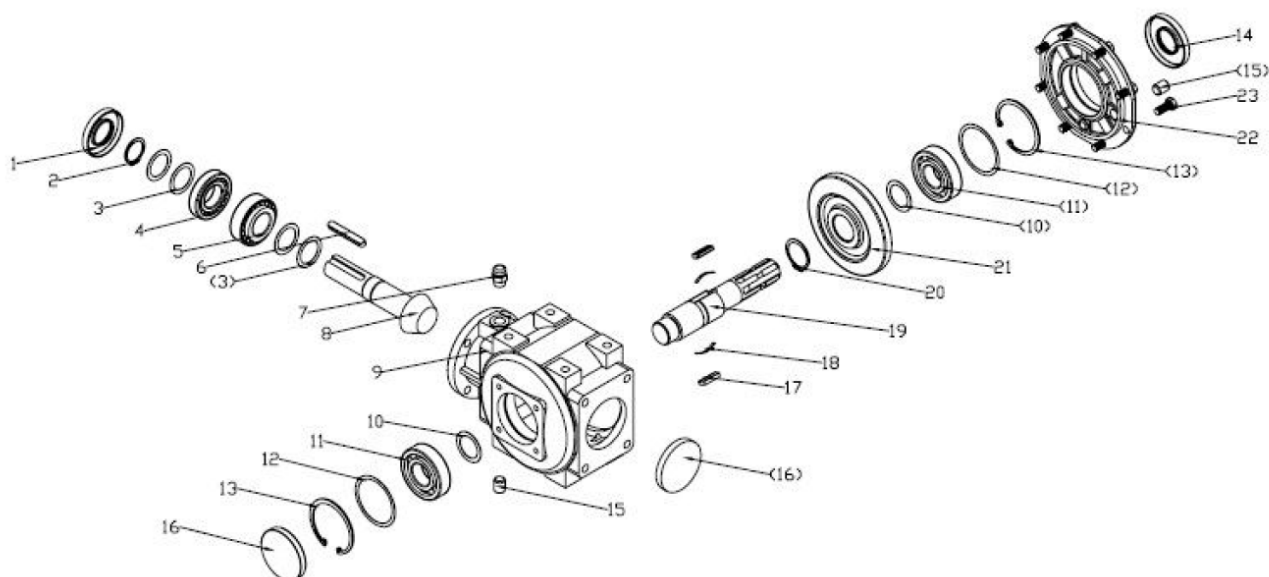


SerNo	PartNo	Description	Quantity	Price	
1,1	DPS125.013	The cover weldment	125	1	489,3
1,2	DPS155.013	The cover weldment	155	1	520,2
1,3	DPS175.013	The cover weldment	175	1	561,4
1,4	DPS205.013	The cover weldment	205	1	592,3
2	GB1152-89/M8X1	Oil cup M8X1	2	3,10	
3	GB6184-86/M12	Locking nut M12	8	0,40	
4	GB5783-86/M12X30	Bolt M12x30	16	0,40	
5	DP175.015	Base plate (R)	1	17,50	
7	GB6184-86/M10	Locking nut M10	2	0,40	

8	GB5783-86/M10X30	Bolt M10x30		2	0,40
9,1	DP125.102	Mud shield	125	1	18,50
9,2	DP155.102	Mud shield	155	1	25,80
9,3	DP175.102	Mud shield	175	1	29,90
9,4	DP205.102	Mud shield	205	1	36,10
23	JB/T7940.2-95/M6	Oil cup M6		2	3,10
24	DP175.018.01	Supporting for roller (L)		1	19,60
25	GB70.3-2000/M12X25	Hex.head bolt M12X25		8	0,40
26	UC207-Z	Flange UC207-Z		4	23,40
27	EFGC125.115	Bearing		4	21,60
28,1	DP125.020	Roller weldment	125	1	206,00
28,2	DP155.020	Roller weldment	155	1	247,20
28,3	DP175.020	Roller weldment	175	1	278,10
28,4	DP205.020	Roller weldment	205	1	298,70
29	DP175.019	Supporting for roller (R)		1	19,60
30	GB93-87/12	Spring washer 12		12	0,20
31,1	EFGC125.018	Blade axle weldment	125	1	525,30
31,2	EFGC155.018	Blade axle weldment	155	1	556,20
31,3	EFGC175.018	Blade axle weldment	175	1	597,40
31,4	EFGC205.018	Blade axle weldment	205	1	618,00
32	EFGC125.113	Fender		1	2,10
33	GB879-86/4X22	Elastic cylindrical pin 4x22		2	1,00
34,1	EFGC125.104	Shaft for fender	125	1	12,40
34,2	EFGC155.104	Shaft for fender	155	1	16,50
34,3	EFGC175.104	Shaft for fender	175	1	19,60
34,4	EFGC205.104	Shaft for fender	205	1	23,70
35	GB6184-86/M16X1.5	Locking nut M16X1.5		2	0,40
36	EFGC125.122A	Blade		2	4,90
37	GB5785-2000	Bolt M16X1.5X90		2	0,40
38	GB13871-94/55X80X8	Oil seal FB55X80X8		1	3,10
39	EFGC125.116	Oil-sealing sleeve		1	7,20
42	BM30.102	Pin for lifting		2	6,20
47	DPS175.011	Hanging weldment		1	91,70
48	EFGC125.123	Pin shaft		1	5,20
50	DP175.014	Base plate (L)		1	17,50
51	DP175.107	Supporting frame		1	15,50
52	1G135.00.107	Bent pin		1	3,10
53	EFGC125.110	R pin		1	2,10
54	EFGC125.112	Cover		1	3,10

55	EFGC125.117A	Small belt ptlley		1	50,50
56	GB/T1154-97/SPB991	Strap SPB991		4	15,50
57	JB/T7934Z3/35X60	Swellable sleeve		2	12,40
58	GB96-85/12	Plain washer 12		5	0,20
59	GB5782-86/M12X120	Bolt M12X130		1	0,40
60	EFGC125.012	Belt cover		1	34,00
61	EFGC125.121A	Big belt ptlley		1	58,70
62	GB6173-86/M20x1.5	Nut M20x1.5		1	0,40
63	GB5786-86/M20X1.5X55	Bolt M20X1.5X55		1	0,40
64	EFGC125.120	Tension plate		1	15,50
65	GB97.1-85/14	Plain washer 14		2	0,20
66	GB6184-86/M14	Locking nut M14		2	0,40
67	DP175.022	Gearbox assembly		1	401,70
68	GB5783-86/M12X35	Bolt M12x35		4	0,40
69	GB96-85/8	Plain washer 8		4	0,20
70	GB93-87/8	Spring washer 8		4	0,20
71	GB5783-86/M8X20	Bolt M8x20		4	0,40
72	DP175.104	Guard shade		1	8,20
73	DPS 175.026	Adjusting frame for the gear box		1	31,90
74,1	DPS 125.056	Plate DPS	125	1	23,70
74,2	DPS155.056	Plate DPS	155	1	26,80
74,3	DPS175.056	Plate DPS	175	1	29,90
74,4	DPS205.056	Plate DPS	205	1	31,90
75,1	DPS 125.017	Rubber DPS	125	1	179,20
75,2	DPS155.017	Rubber DPS	155	1	200,90
75,3	DPS175.017	Rubber DPS	175	1	226,60
75,4	DPS205.017	Rubber DPS	205	1	271,90

## DPS\_GearboxAssembly

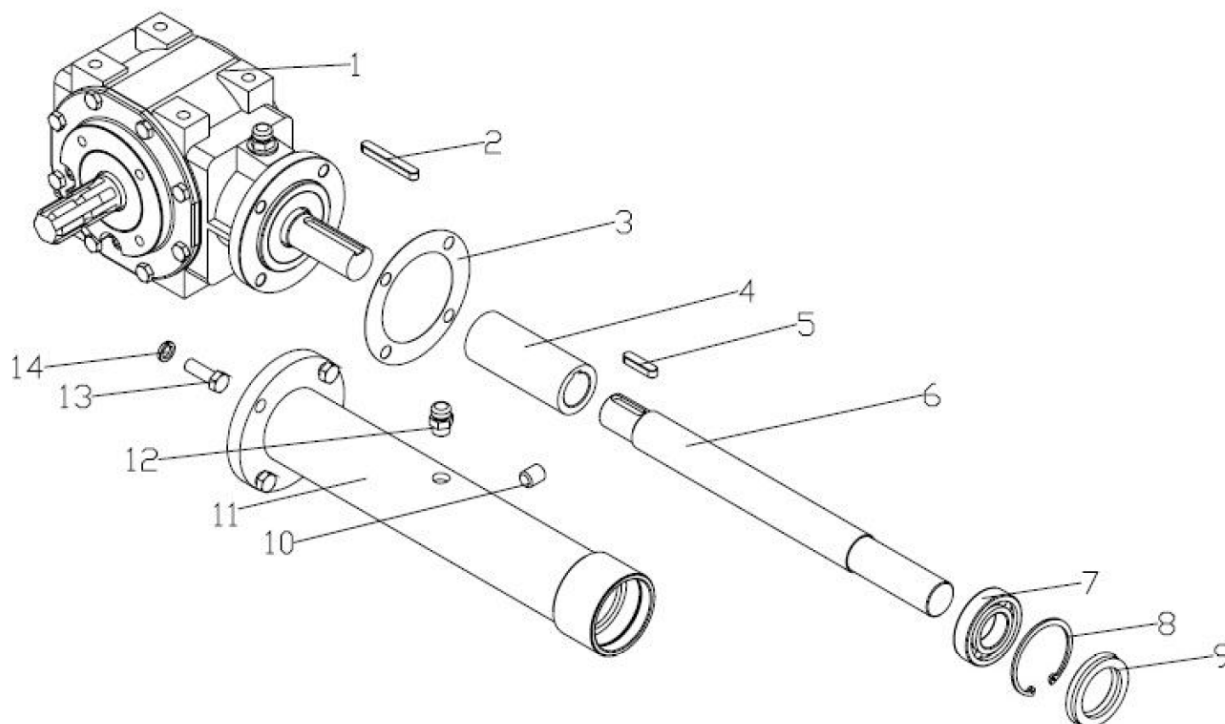


SerNo	PartNo	Description	Quantity	Price
1	TS50.300Z.02	Gearbox assembly	1	355,40
2	GB1096-79/A10X70	Key A10X70	1	2,10
3	EFGC125.166	Paper gasket	1	2,10
4	EFGC125.167	Connected sleeve	1	8,20
5	GB1096-79/A10X40	Key A10X40	1	2,10
6,1	DP125.155	Shaft 125	1	36,10
6,2	DP155.155	Shaft 155	1	36,10
6,3	DP175.155	Shaft 175	1	36,10
6,4	DP205.155	Shaft 205	1	36,10
7	GB/T276-94/6207	Bearing 6207	1	23,70
8	GB893.1-86/72	Circlip 72	1	2,10
9	GB13871-94/35X72X10	Oil seal 35x72x10	1	3,10
10	ZBT 32001.3-87	Retainer	1	3,10
11,1	DP125.023	Shaft tube weldment 125	1	48,40
11,2	DP155.023	Shaft tube weldment 155	1	48,40
11,3	DP175.023	Shaft tube weldment 175	1	48,40
11,4	DP205.023	Shaft tube weldment 205	1	48,40
12	EFGC125.169	Bolt of plug screw ZG3/8"-19	1	4,10
13	GB5783-86/M12X35	Bolt M12X35	4	0,40

## Sezione

3

## DPS\_Gearbox



SerNo	PartNo	Description	Quantity	Price
1	GB9877.1-88/35X72X10	Oil seal 35×72×10	1	3,10
2	GB894.1-89/35	Circlips for shaft 35	1	0,50
3	TS50.300Z.01.110	Washer (S) 0.7	4	0,20
4	GB297-94/30207	Bearing 30207	1	12,40
5	GB297-94/32207	Bearing 32207	1	12,40
6	GB1096-79/10X65	Key 10X65	1	2,10
7	EFGC125.169	Bolt of plug screw ZG3/8"-19	1	0,40
8	TS50.300Z.01.111	Bevel gear shaft	1	46,40
9	TS50.300Z.01.101	Gearbox complete	1	144,20
10	TS50.300Z.01.105	Washer (S) 1	2	0,20
11	GB/T276-94/6307	Bearing 6307	2	23,70
12	TS50.300Z.01.104	Washer (B) 0.7	2	0,20
13	GB893.1-86/80	Circlips for hole 80	2	0,50
14	GB9877.1-88/35X80X10	Oil seal 35×80×10	1	3,10
15	ZBT 32001.3-87	Retainer	1	3,10
16	TS50.300Z.01.106	Seal cover	2	4,10

17	TS50.300Z.01.108	Key	2	2,10
18	TS50.300Z.01.109	Spring	2	2,10
19	TS50.300Z.02.103	Pinion shaft	1	52,50
20	GB894.1-89/42	Circlips for shaft 42	1	0,50
21	TS50.300Z.01.107	Bevel gear	1	48,40
22	TS50.300Z.01.102	Gearbox cover	1	38,10
23	GB5783-86/M10X25	Bolt M18x40	8	0,40