

## MA 160H - 220H



GEO Italy S.R.L.

Latest release: 16/03/2021

Via G. Abbate, 215, 14054 Castagnole delle Lanze AT

Page 1

# Table of Contents

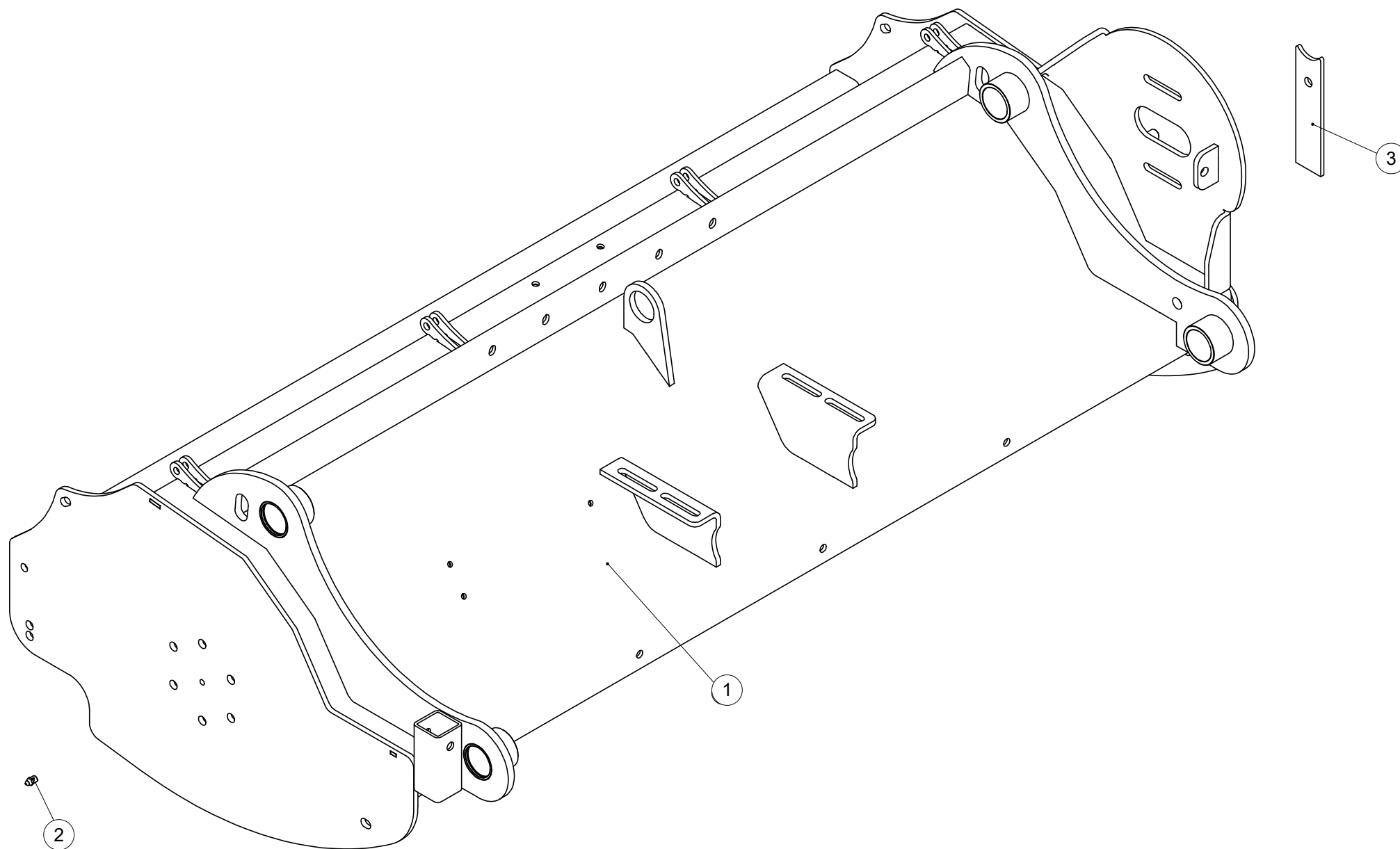
Tavola	Page
MA 160H - 220H part1	3
MA 160H - 220H part2	5
MA 160H - 220H part3	7
MA 160H - 220H part4	9
MA 160H - 220H part5	11
MA 160H - 220H part6	13
MA 160H - 220H part8	15
MA 160H - 220H part9	17
MA 160H - 220H part10	19
MA 160H - 220H part11	21
MA 160H - 220H part12	23
MA 160H - 220H part13	25
MA 160H - 220H part14	27
MA 160H - 220H part15	29
MA 160H - 220H part16	31
MA 160H - 220H part18	33
MA 160H - 220H part19	35
MA 160H - 220H part20	37



Machine: MA 160H - 220H  
Assembly: MA 160H - 220H part1



Pos	Code	Description	NOTE	Q.
-----	------	-------------	------	----

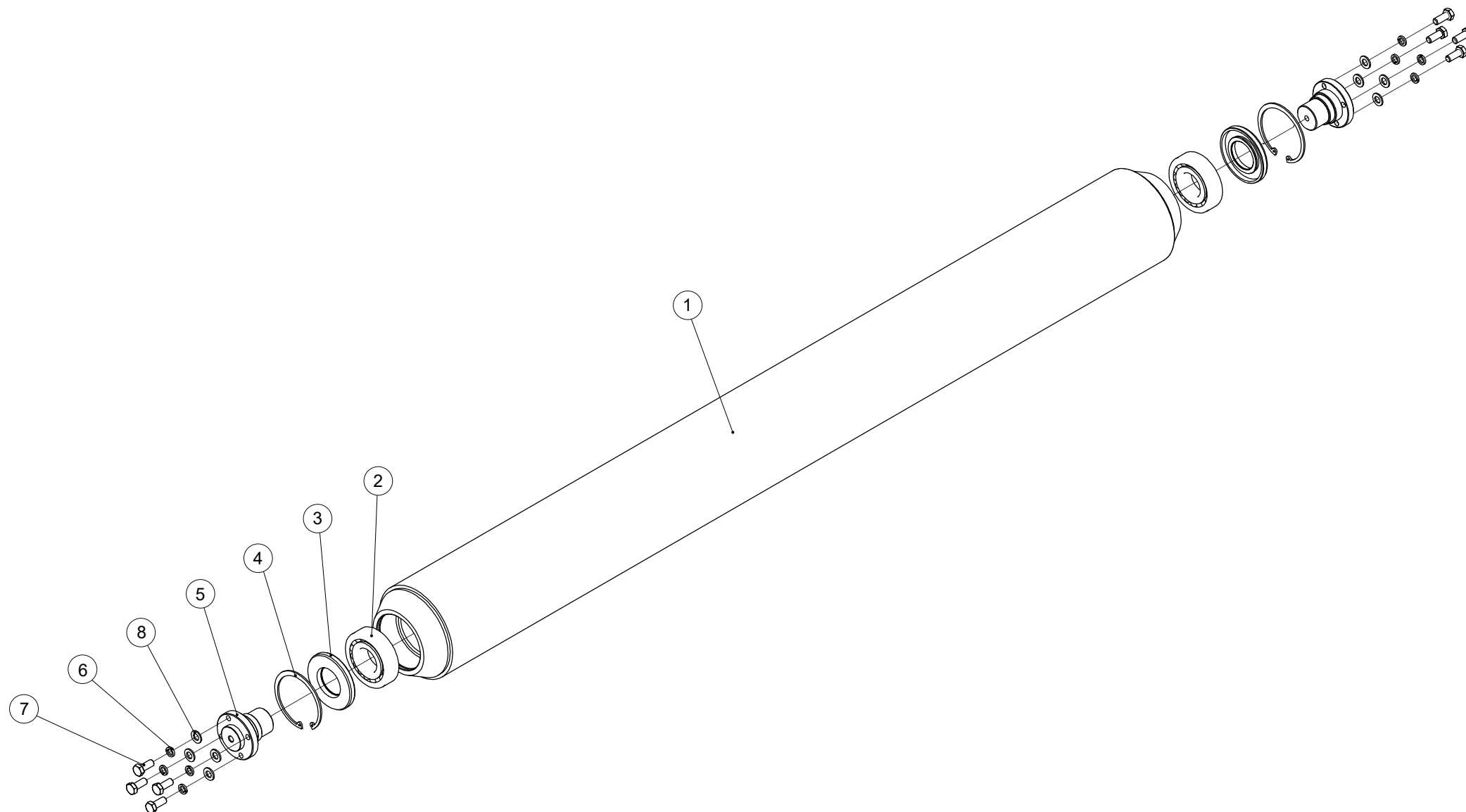


Machine: MA 160H - 220H

Assembly: MA 160H - 220H part2



Pos	Code	Description	NOTE	Q.
1	G01001A01100-000	Panel hood weldment 160		1
1	G01002A01100-000	Panel hood weldment 180		1
1	G01003A01100-000	Panel hood weldment 200		1
1	G01004A01100-000	Panel hood weldment 220		1
2	Din71412-G1/8-A	Grease nipple		1
3	G01001A01000-001	Fender plate		1



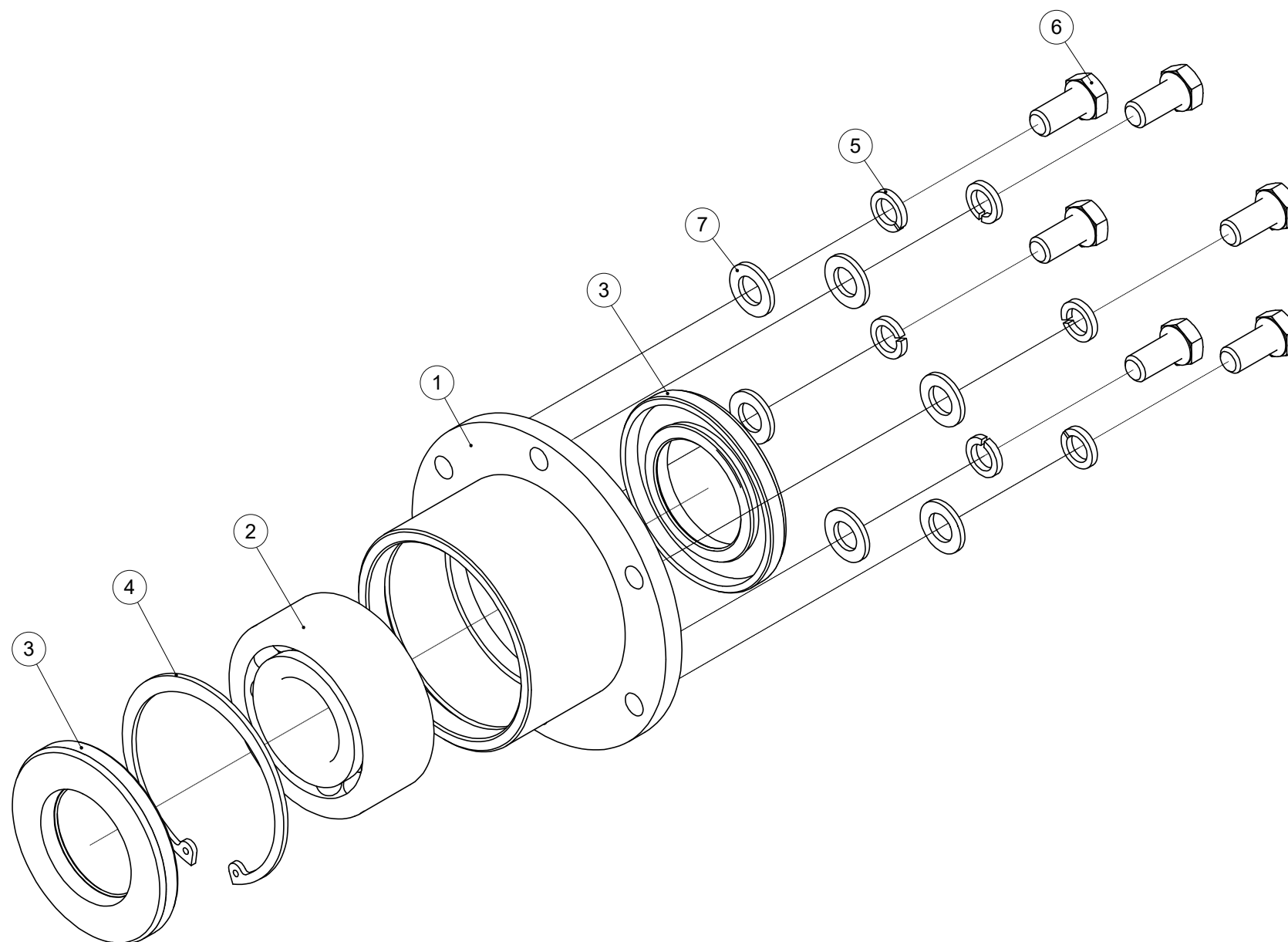
Machine: MA 160H - 220H

Assembly: MA 160H - 220H part3



Pos	Code	Description	NOTE	Q.
1	G01001A03100-000	Roller welded parts 160		1
1	G01002A03100-000	Roller welded parts 180		1
1	G01003A03100-000	Roller welded parts 200		1
1	G01004A03100-000	Roller welded parts 220		1
2	GB/T281-1308	Self-aligning ball bearing		2
3	GB/T13871.1-45×90×10	Seal 45x90x10		2
4	GB/T893-90-A	Retaining rings for borP		2
5	G01001A03000-001	Roller shaft		2
6	GB/T93-10-EP.Zn	Spring washer		8
7	GB/T5783-M10×25	Full-thread hexagon bolts		8
8	GB/T95-10-EP.Zn	Plain washer		8



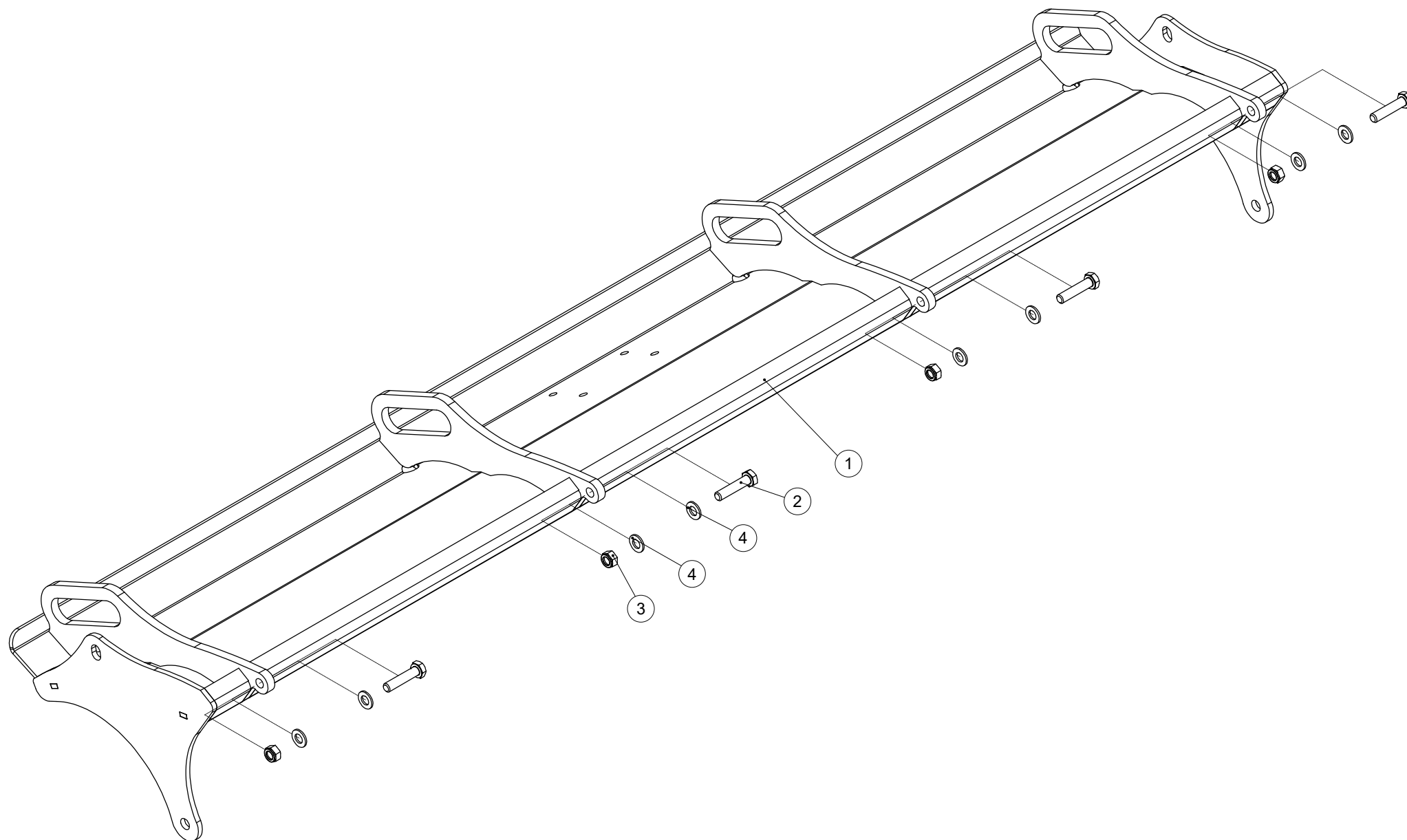


Machine: MA 160H - 220H

Assembly: MA 160H - 220H part4



Pos	Code	Description	NOTE	Q.
1	G01001A04100-000	Bearing seat weldment		1
2	GB/T281-2308	Self-aligning ball bearing		1
3	GB/T13871.1-50×90×10	Oil Seal 50×90×10		2
4	GB/T893-90-A	Retaining rings for borP		1
5	GB/T93-12-EP.Zn	Spring washer		6
6	GB/T5783-M12×25	BOLT M12x25		6
7	GB/T95-12-EP.Zn	Plain washer		6

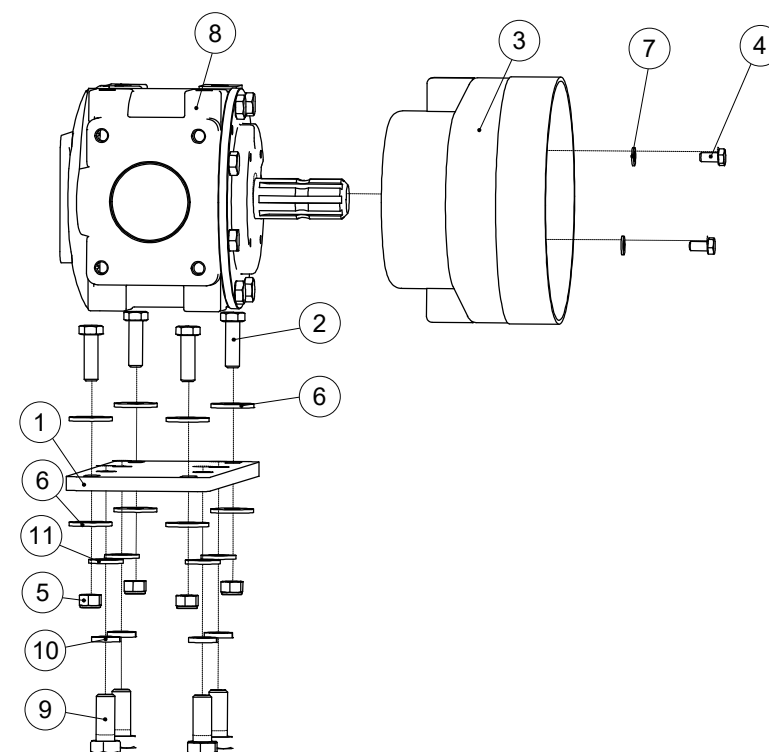
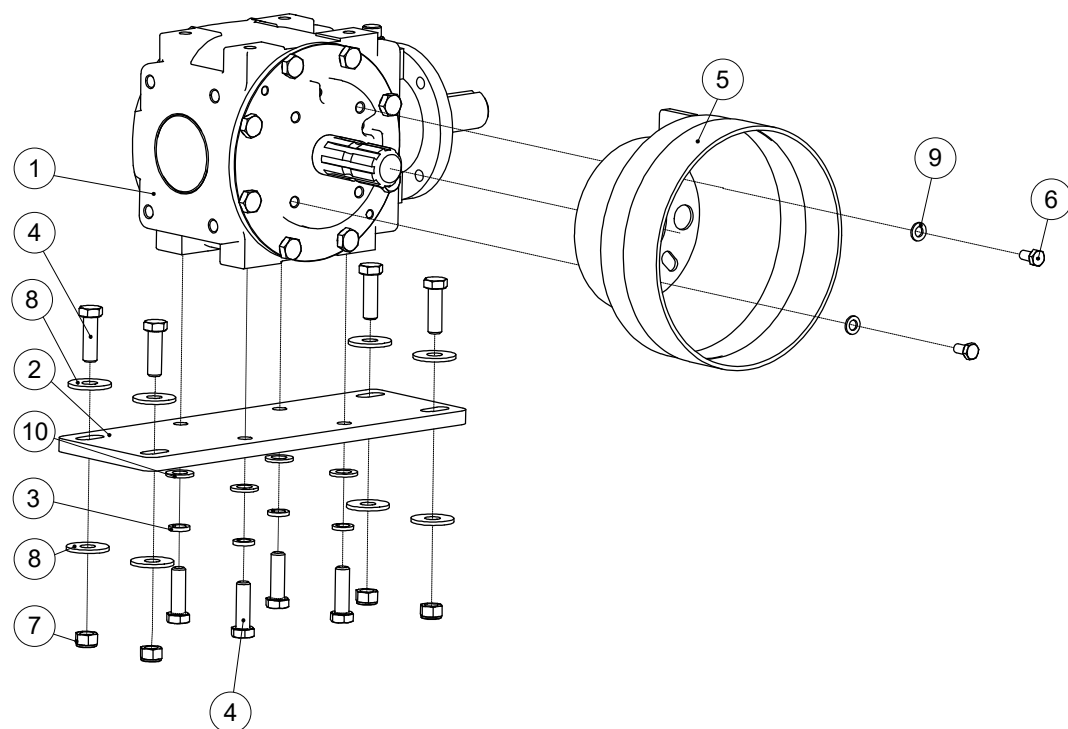


Machine: MA 160H - 220H

Assembly: MA 160H - 220H part5



Pos	Code	Description	NOTE	Q.
1	G01001A06100-000	Covering plate weldment 160		1
1	G01002A06100-000	Covering plate weldment 180		1
1	G01003A06100-000	Covering plate weldment 200		1
1	G01004A06100-000	Covering plate weldment 220		1
2	GB/T5783-M10x45	BOLT M10x45		4
3	GB/T889.1-M10-8-EP.Zn	Locknut		4
4	GB/T95-10-EP.Zn	Plain washer		8

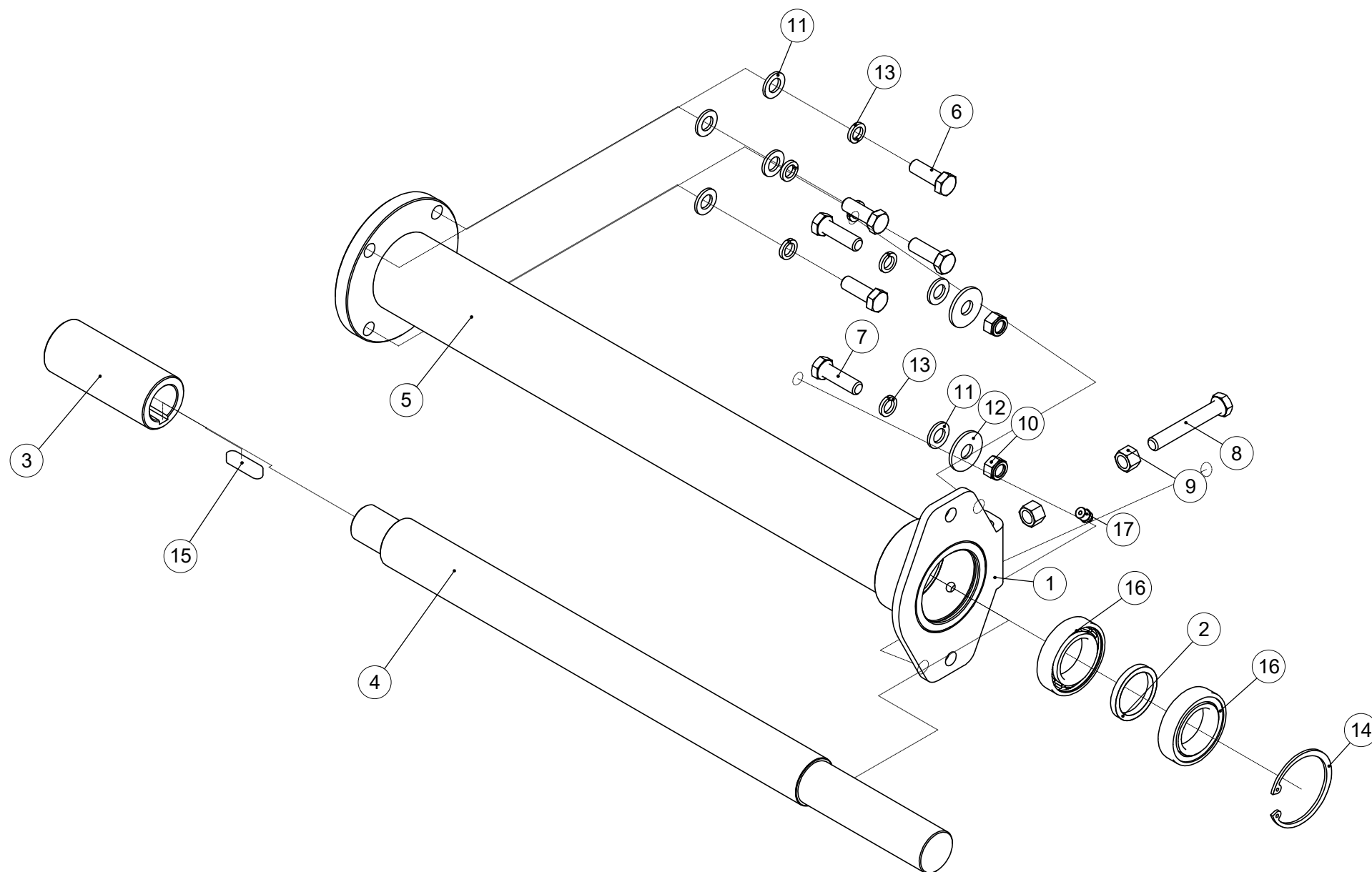


Machine: MA 160H - 220H

Assembly: MA 160H - 220H part6



Pos	Code	Description	NOTE	Q.
1	3160100014	Gear box		0
2	2000000071	gearbox mounting bracket		0
3	3080500009	Spring washer		0
4	3040100071	full-thread hexagon bolts		0
5	3210300014	guard		0
6	3040100021	full-thread hexagon bolts		0
7	3050500007	Locknut		0
8	3080200010	large plain washer		0
9	3080100004	Plain washer		0
10	3080100007	Plain washer		0
11	3080100009	Plain washer		1



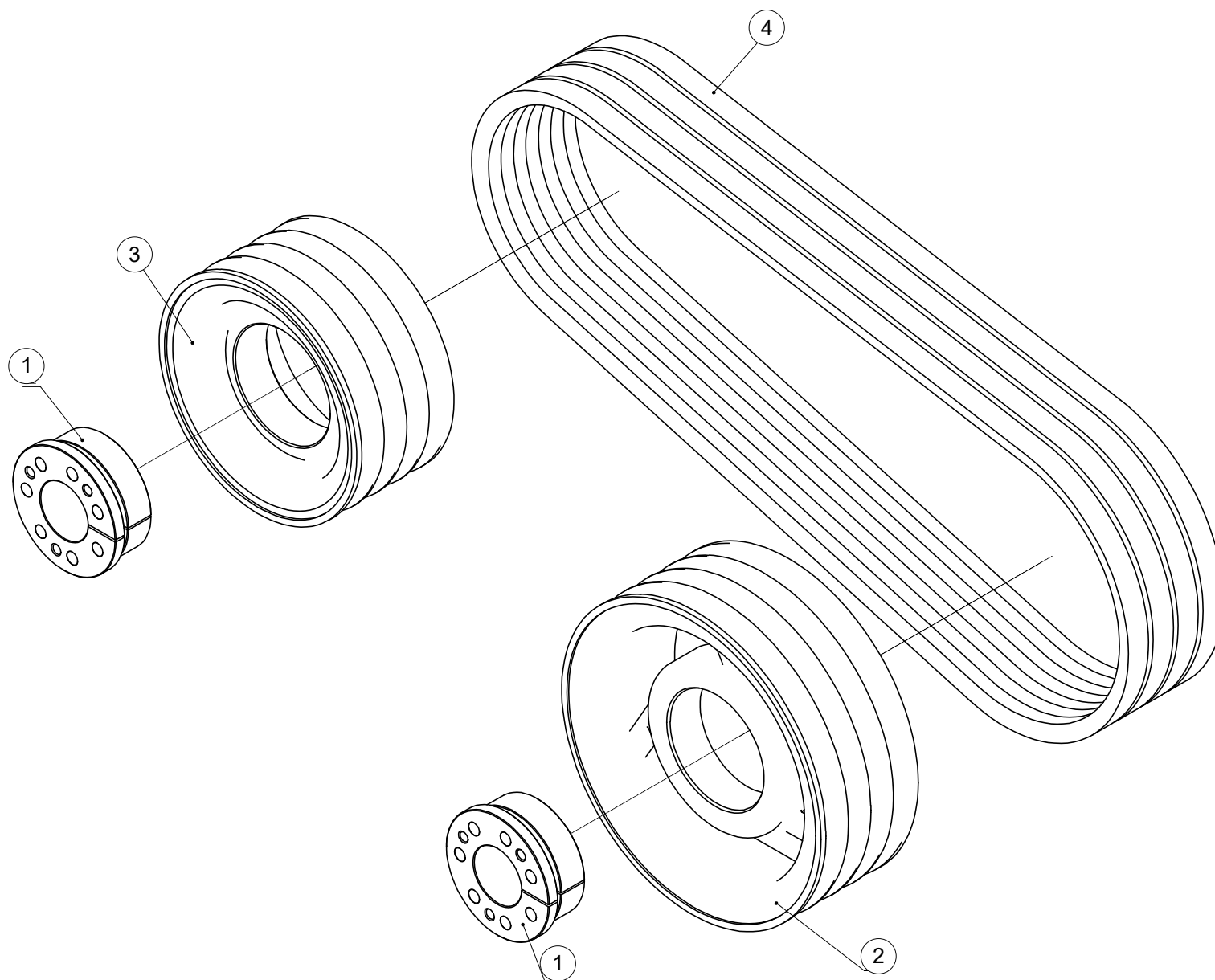
Machine: MA 160H - 220H

Assembly: MA 160H - 220H part8



Pos	Code	Description	NOTE	Q.
1	2000000072	Fixing plate		1
2	2000000086	Spacer		1
3	2010000016	Sleeve		1
4	2010000088	Connecting shaft		1
5	2020000164	The propeller shaft tube weldment		1
6	3040100069	Full-thread hexagon bolts		4
7	3040100071	full-thread hexagon bolts		2
8	3040100079	Full-thread hexagon bolts		1
9	3050100007	Hexagon Nuts		2
10	3050500007	Locknut		2
11	3080100007	Plain washer		6
12	3080200010	large plain washer		2
13	3080500009	Spring washer		6
14	3080600041	Retaining rings for borP		1
15	3090100009	Square and rectangular keys		1
16	3100100026	Deep groove ball bearing		2
17	3170400005	Grease nipple		1



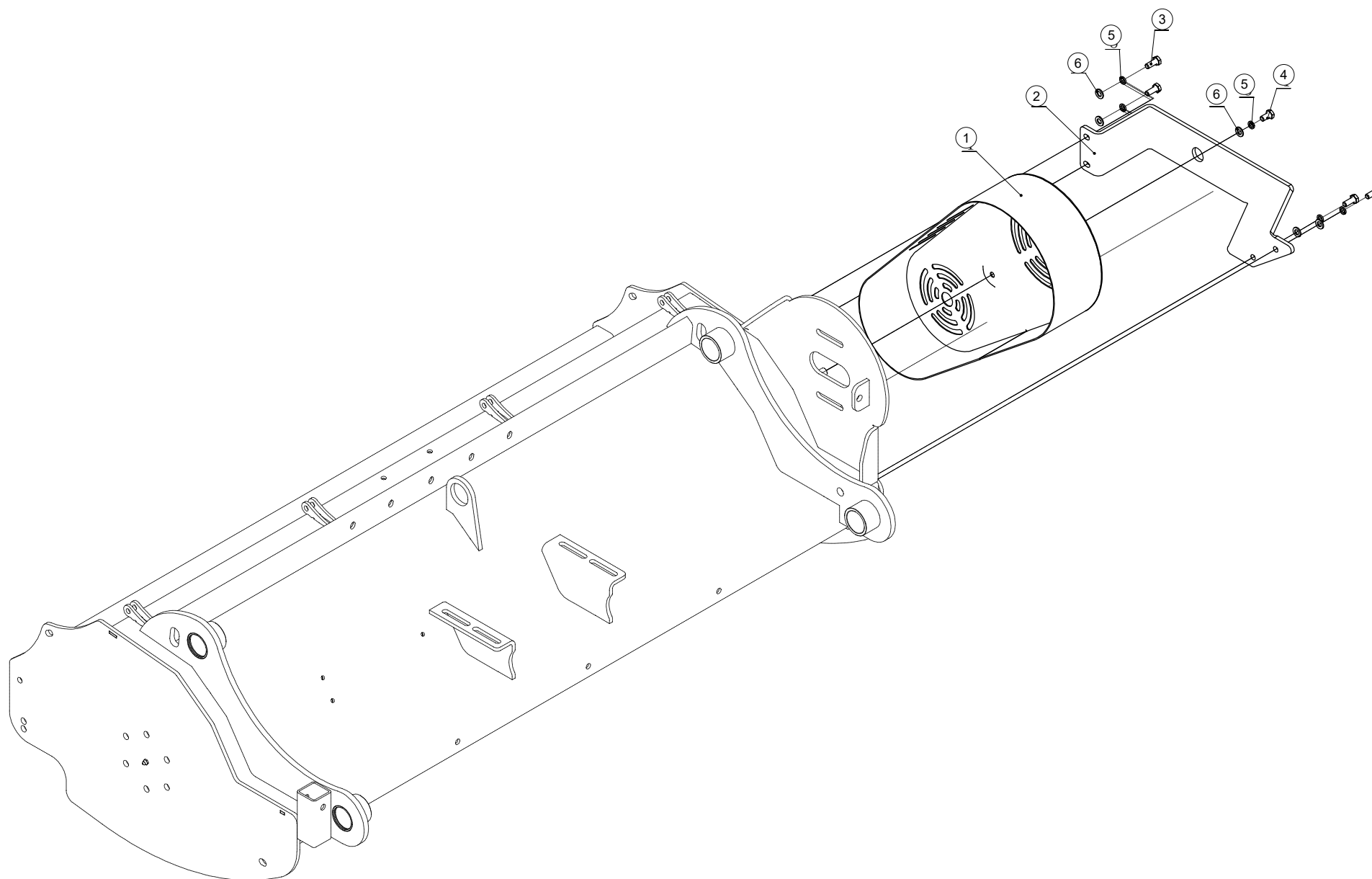


Machine: MA 160H - 220H

Assembly: MA 160H - 220H part9



Pos	Code	Description	NOTE	Q.
1	3160500007	Expanding sleeve		2
2	AGF220.203.4	Big belt pulley 220 mm 4 grooves		1
3	AGF220.202.4	Small belt pulley 165 mm 4 grooves		1
4	3160300014	belt		4

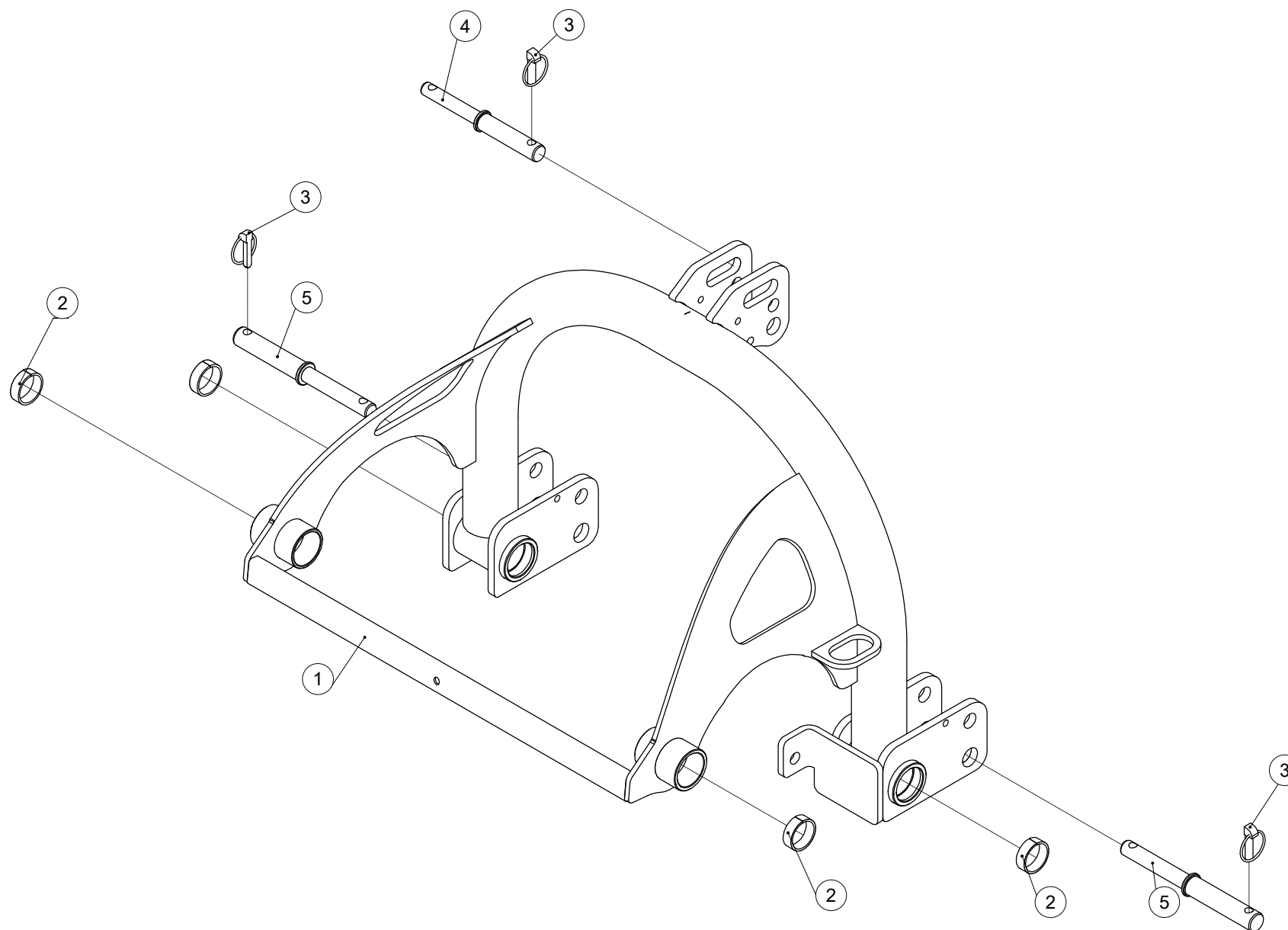


Machine: MA 160H - 220H

Assembly: MA 160H - 220H part10



Pos	Code	Description	NOTE	Q.
1	2020000176	Pulley cover weldment		1
2	2000000115	Fender		1
3	3040100043	Full-thread hexagon bolts		4
4	3040100041	Full-thread hexagon bolts		1
5	3080500008	Spring washer		5
6	3080100006	plain washer		5

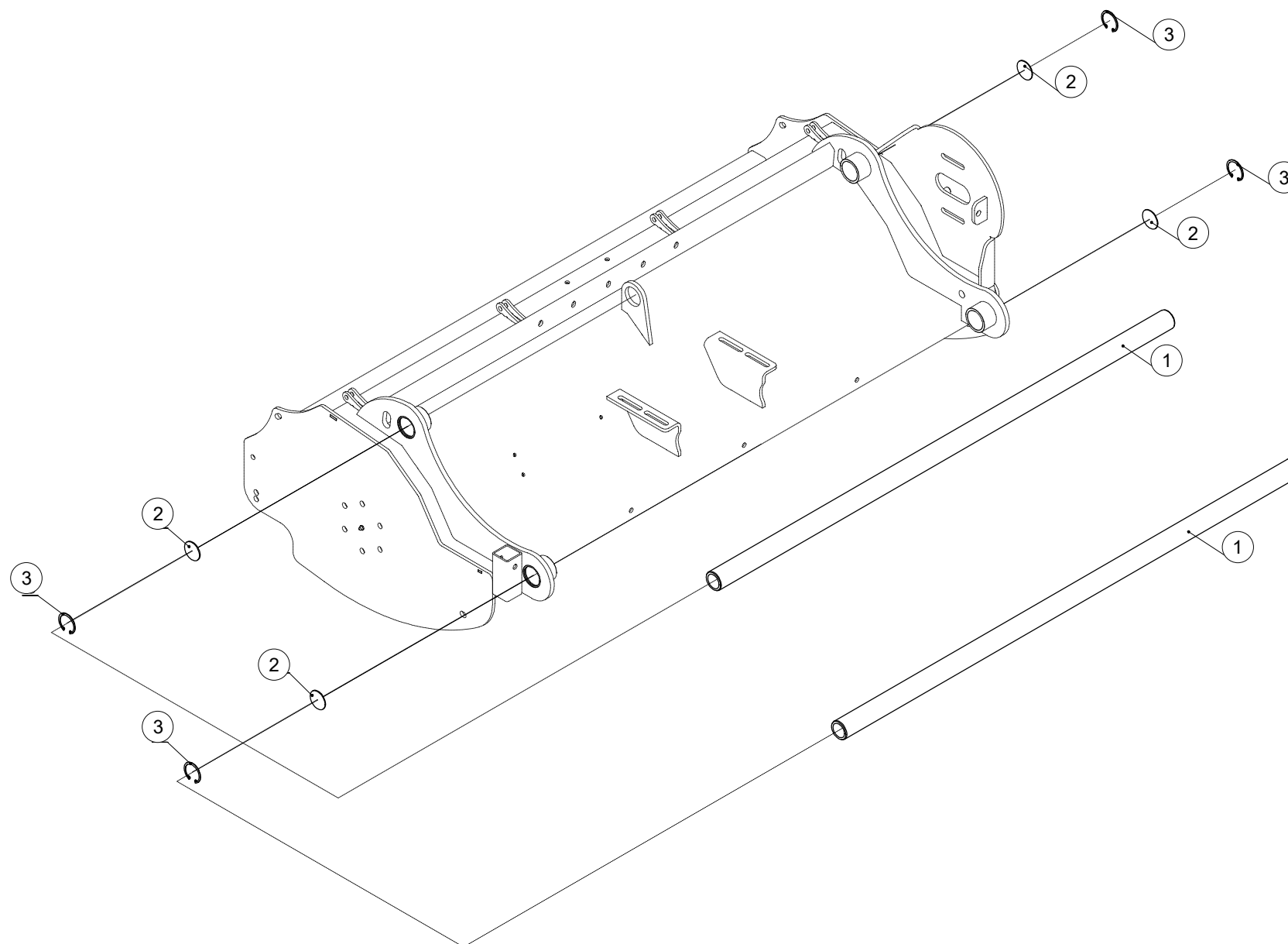


Machine: MA 160H - 220H

Assembly: MA 160H - 220H part11



Pos	Code	Description	NOTE	Q.
1	2020000178	Hitch weldment		1
2	3101100003	Guide ring		4
3	3120400007	Pin		3
4	3120500032	Pin		1
5	3120500054	Hitch pin-Lower		2



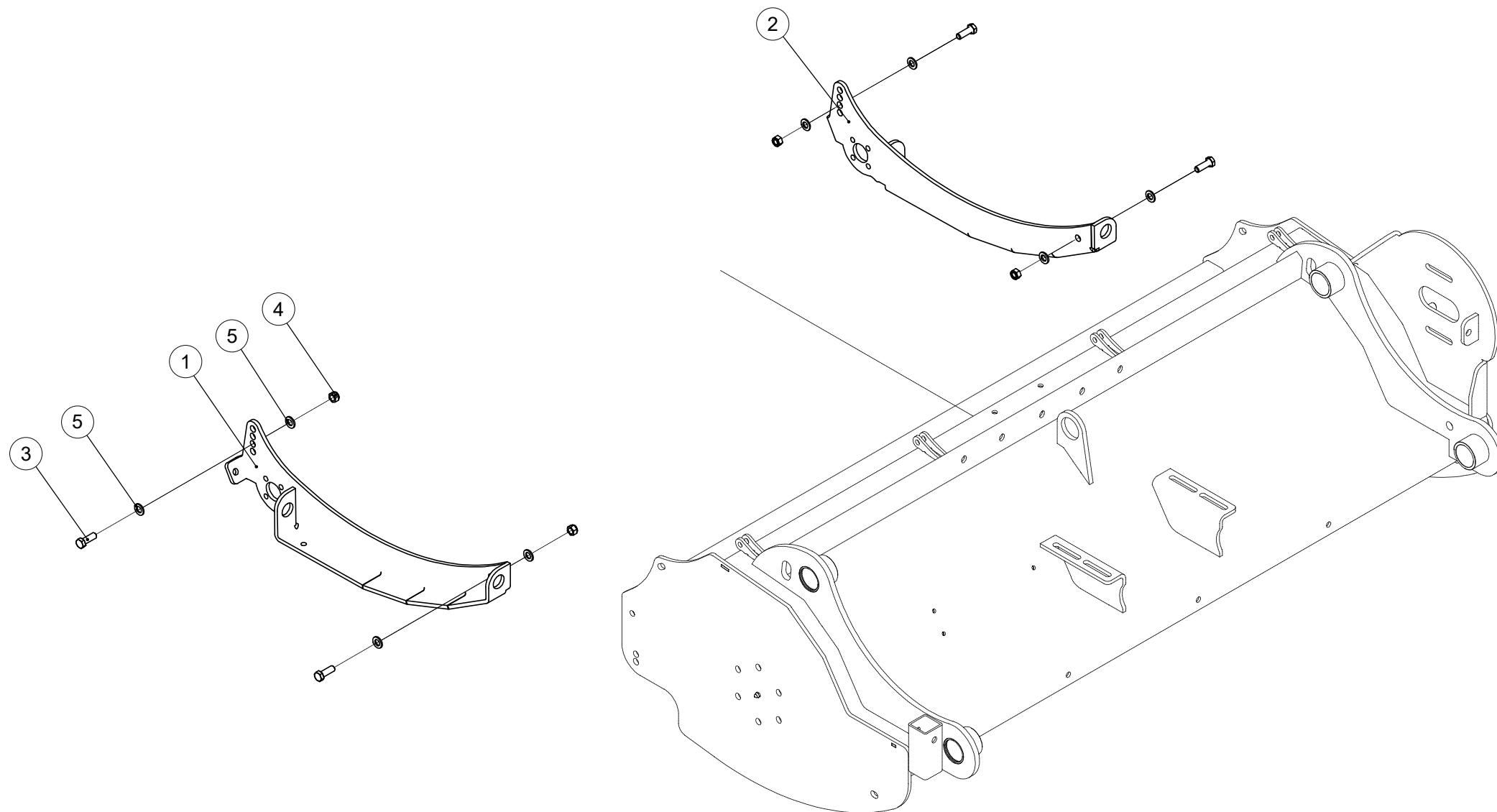
Machine: MA 160H - 220H

Assembly: MA 160H - 220H part12



Pos	Code	Description	NOTE	Q.
1	3230100010	Guide rail		2
2	2000000114	Cover plate		4
3	3080600031	Retaining rings for borP		4



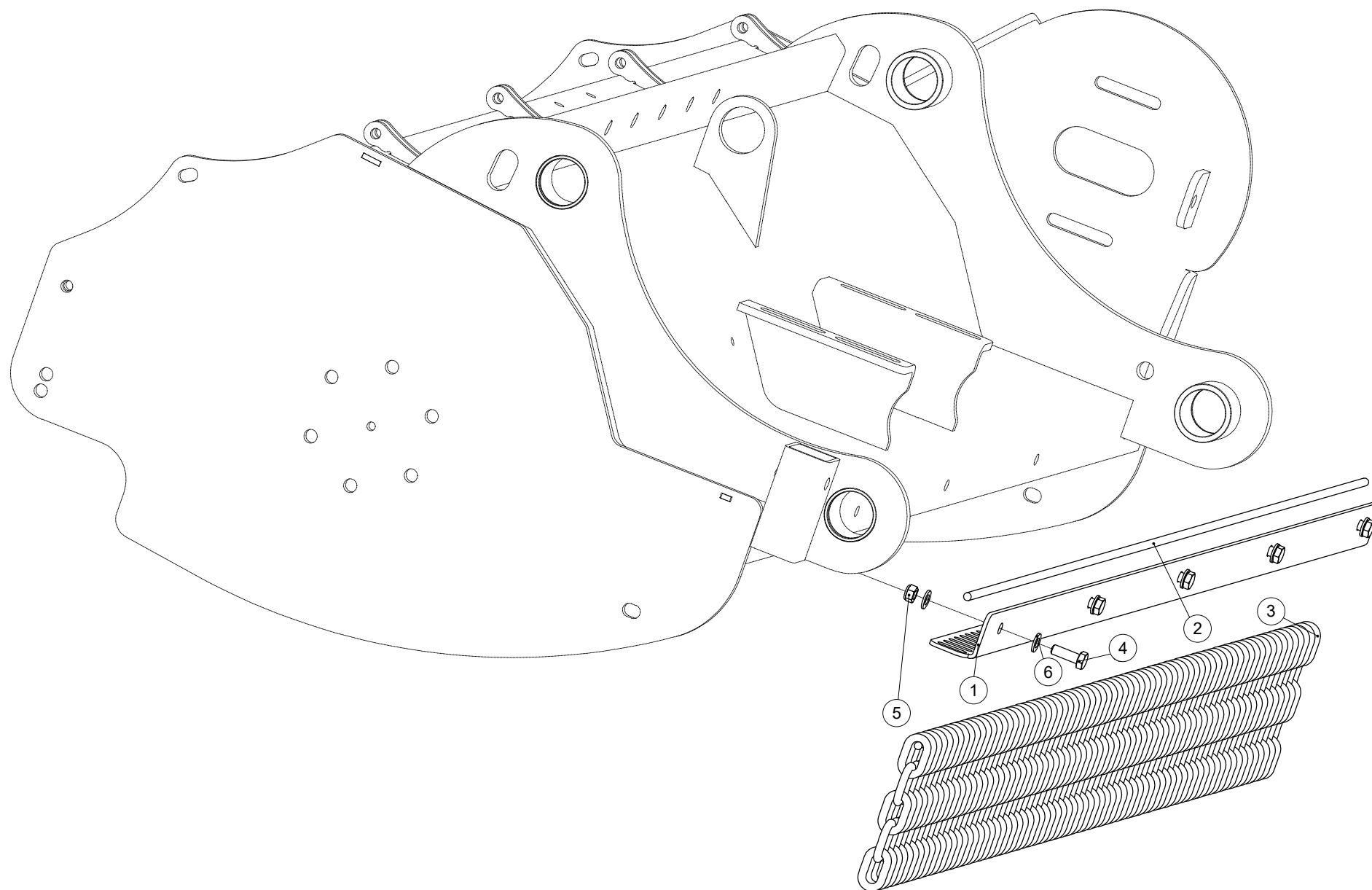


Machine: MA 160H - 220H

Assembly: MA 160H - 220H part13



Pos	Code	Description	NOTE	Q.
1	2000000672	Left Skid plate		1
2	2000000673	Right Skid plate		1
3	3040100069	Full-thread hexagon bolts		4
4	3050500007	Locknut		4
5	3080100007	Plain washer		8

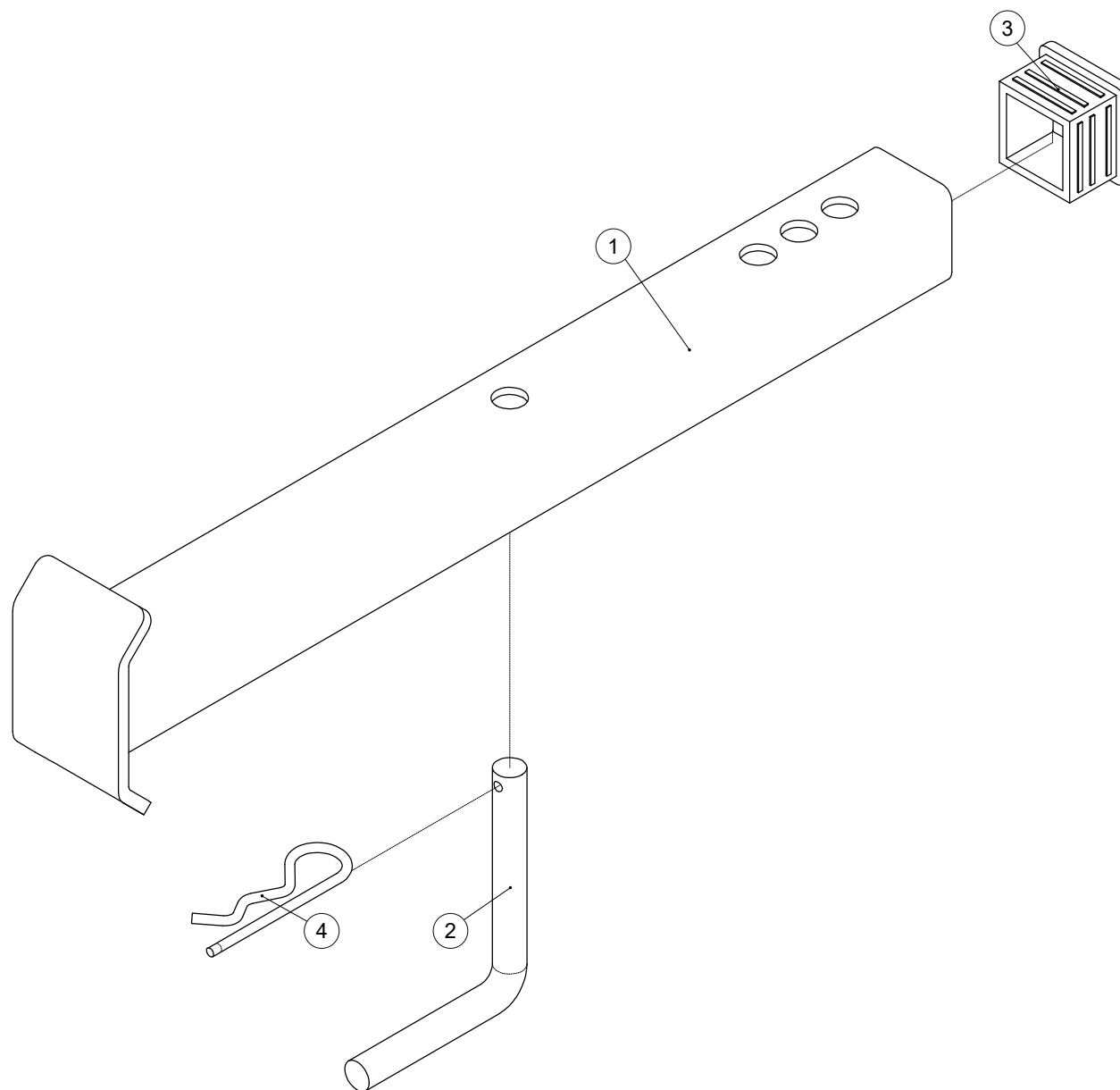


Machine: MA 160H - 220H

Assembly: MA 160H - 220H part14



Pos	Code	Description	NOTE	Q.
1	2000000676	chain plate		1
1	2000000677	chain plate		1
1	2000000678	chain plate		1
1	2000000679	chain plate		1
2	2010000050	chain mounted axle		1
2	2010000051	chain mounted axle		1
2	2010000052	chain mounted axle		1
2	2010000053	chain mounted axle		1
3	3130100606	galvanized chain		72
4	3040100045	full-thread hexagon bolts		5
5	3050500004	locknut		5
6	3080100006	plain washer		10

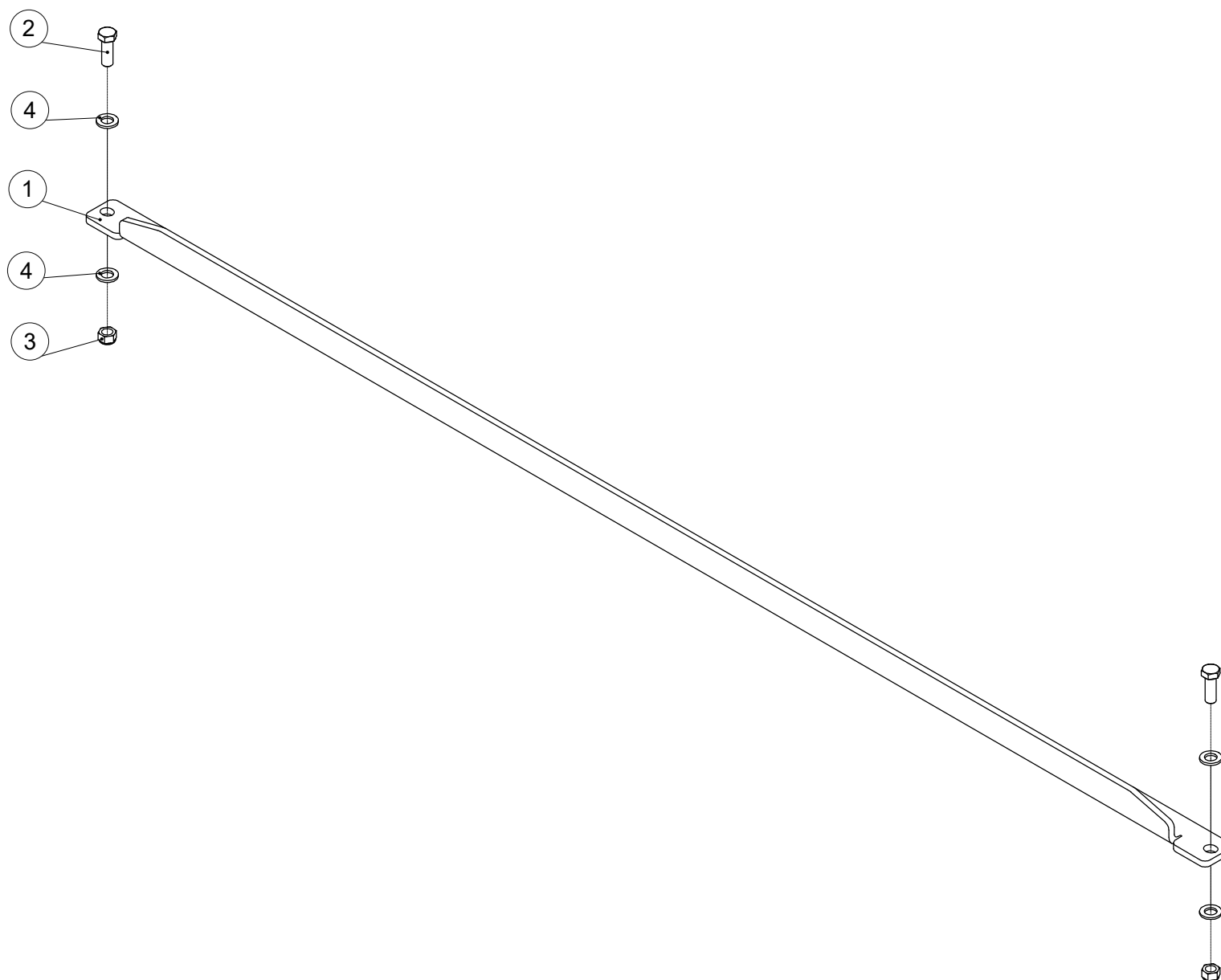


Machine: MA 160H - 220H

Assembly: MA 160H - 220H part15



Pos	Code	Description	NOTE	Q.
1	2020000177	Raker weldment		1
2	2010000017	Raker pin		1
3	3210200004	Square Pipe Plug		1
4	3120400008	R Pin		1



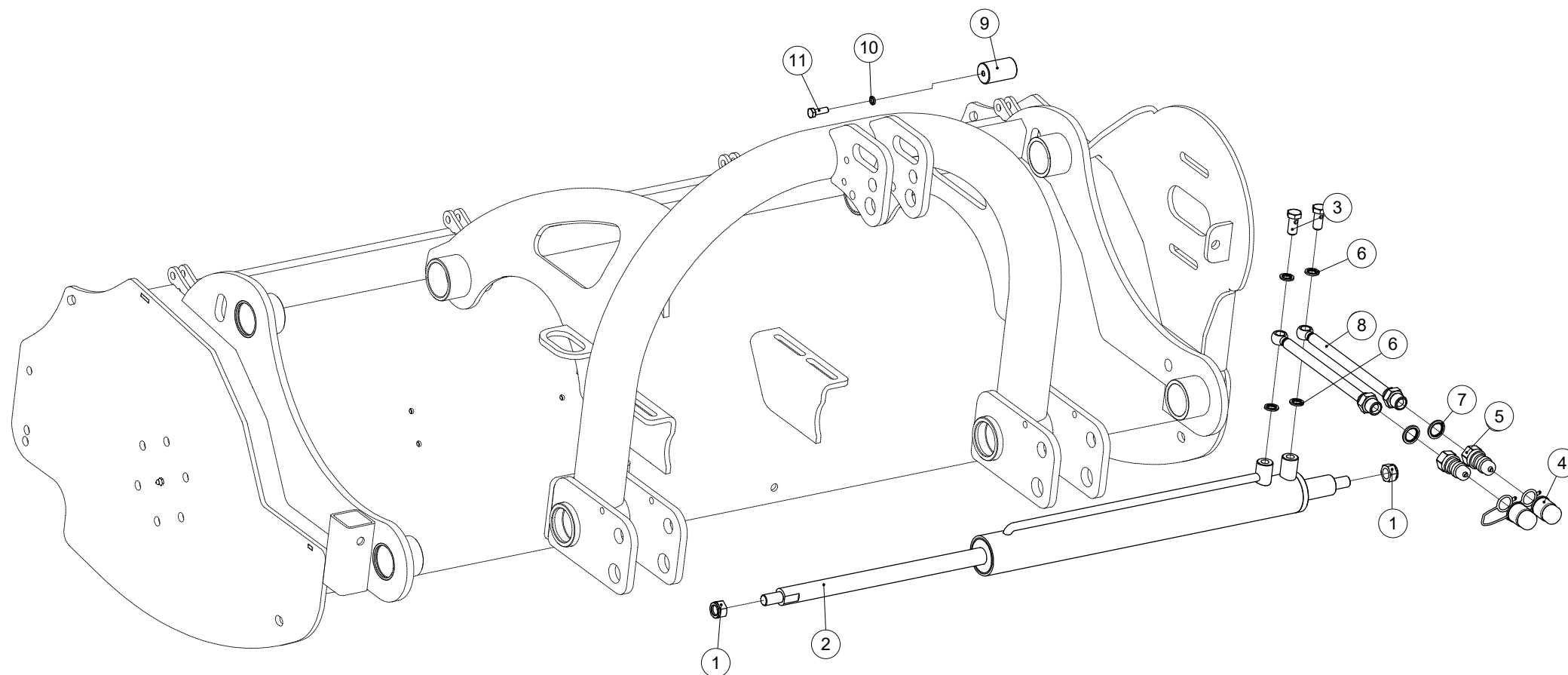
Machine: MA 160H - 220H

Assembly: MA 160H - 220H part16



Pos	Code	Description	NOTE	Q.
1	2020000177	Raker weldment		1
2	2010000017	Raker pin		1
3	3210200004	Square Pipe Plug		1
4	3120400008	R Pin		1



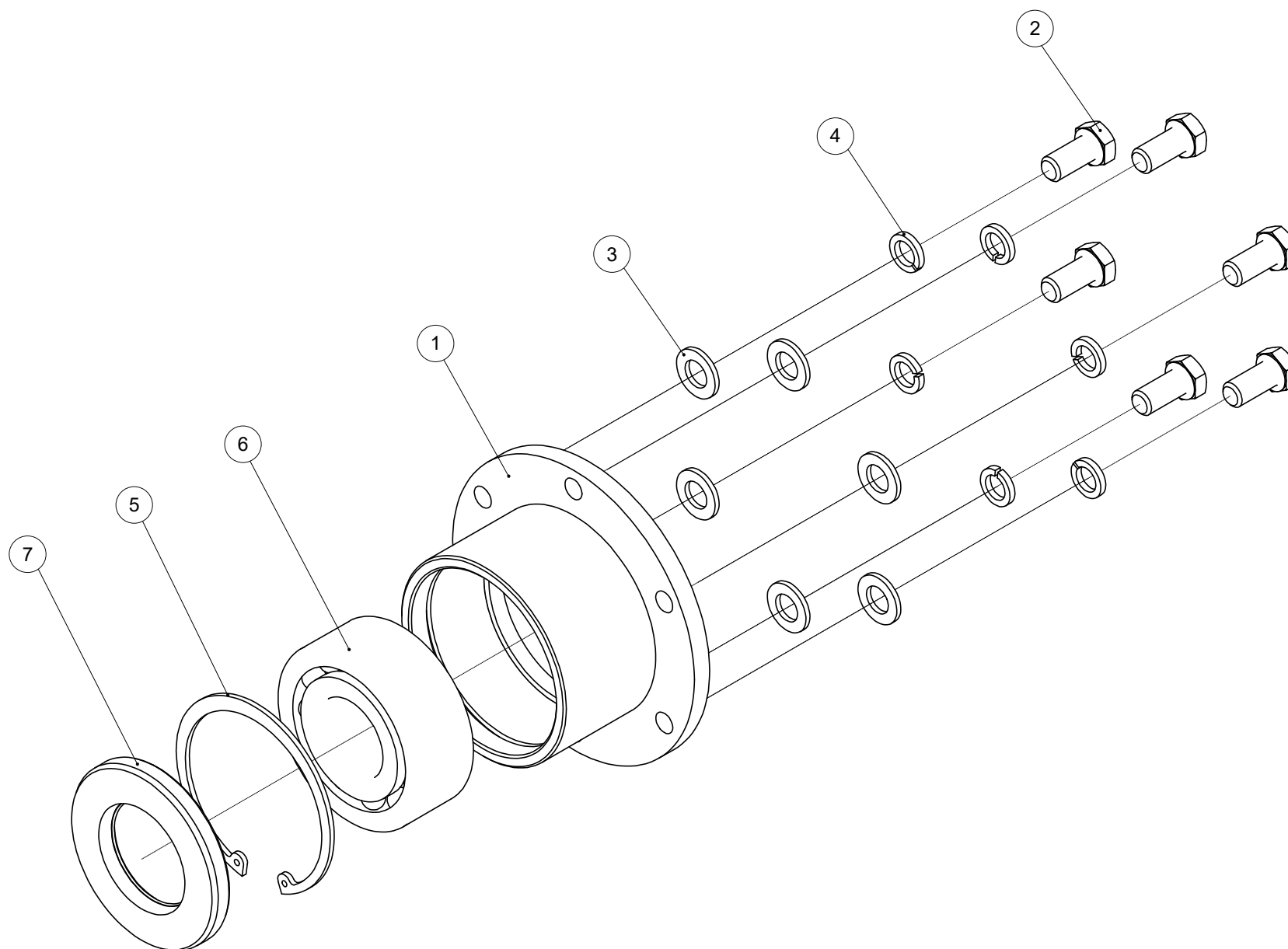


Machine: MA 160H - 220H

Assembly: MA 160H - 220H part18



Pos	Code	Description	NOTE	Q.
1	3050500009	Locknut		2
2	3181300031	Hydraulic cylinder		1
3	3180300009	Hollow bolt		2
4	3210300002	A type protective sleeve (for male connector)		2
5	3180500001	Hollow bolt		2
6	3170300001	Combined sealing gaskets		4
7	3170300006	Combined sealing gaskets		2
8	3180200149	Hose		2
9	3210500035	Rubber		2
10	3080500007	Spring washer		2
11	3040100024	Full-thread hexagon bolts		2

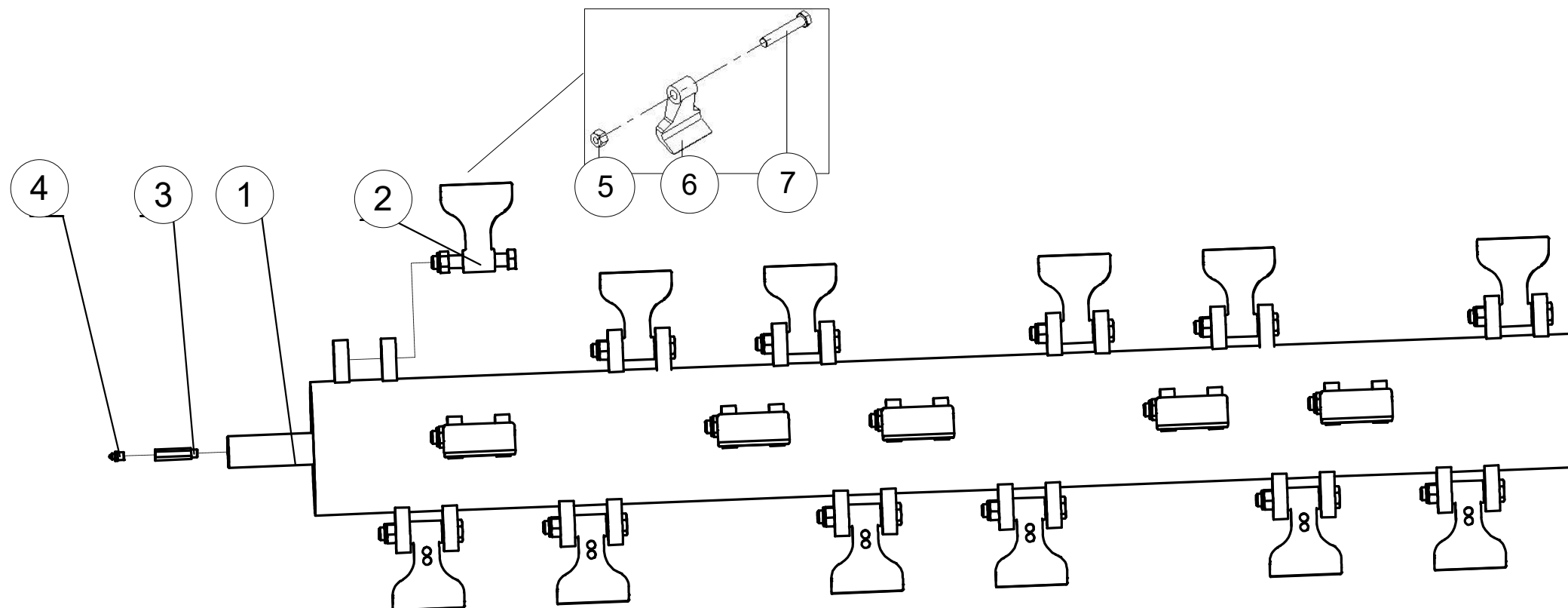


Machine: MA 160H - 220H

Assembly: MA 160H - 220H part19



Pos	Code	Description	NOTE	Q.
1	2020000165	Bearing seat weldment		1
2	3040100065	Full-thread hexagon bolts		6
3	3080100007	Plain washer		6
4	3080500009	Spring washer		6
5	3080600050	Retaining rings for borP		1
6	3100200011	Self-aligning ball bearing		1
7	3170100041	shaft seal		1



Machine: MA 160H - 220H

Assembly: MA 160H - 220H part20



Pos	Code	Description	NOTE	Q.
1	G01001A02100-000	Axle weldment 160		1
1	G01002A02100-000	Axle weldment 180		1
1	G01003A02100-000	Axle weldment 200		1
1	G01004A02100-000	Axle weldment 220		1
2	G01001A02200-000	blade assembly		22
3	G01001A02000-001	Pressure lubricator connector		1
3	MT85001	Pressure lubricator connector		1
4	Din71412-G1/8-A	Grease nipple		1
5	GB/T6184-86-M16X1.5	Locking nut M16X1.5		1
6	MA.100.00.107	MA Hammer		1
7	GB5785-M16X1.5X90	Bolt M16X1.5X90		1