

EFGCH



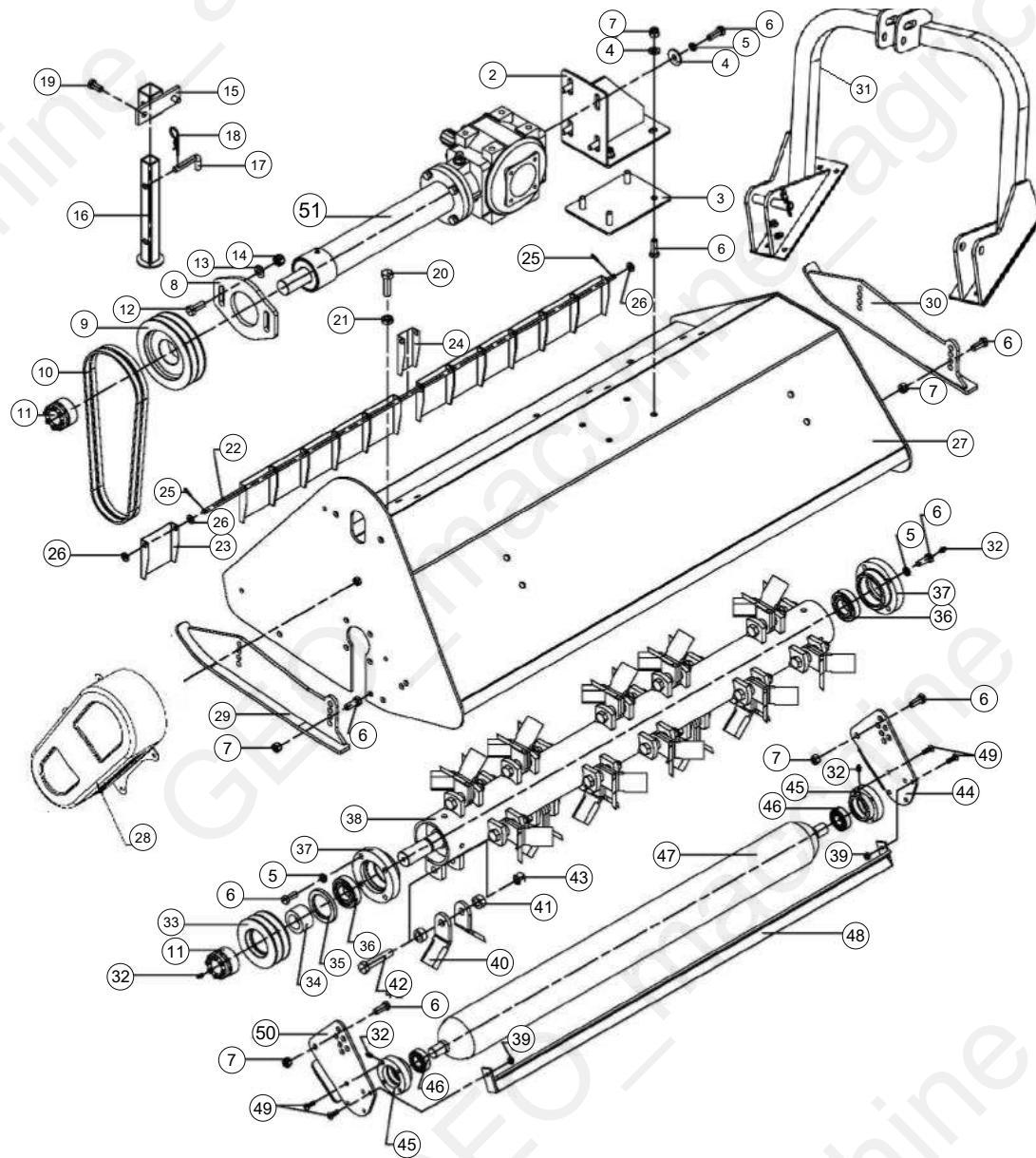
Table of Contents

Tavola	Page
EFGCH	3
EFGCH 2013 2016	13
EFGCH 2009 2012	23

EFGCH



GEO Italy S.R.L.

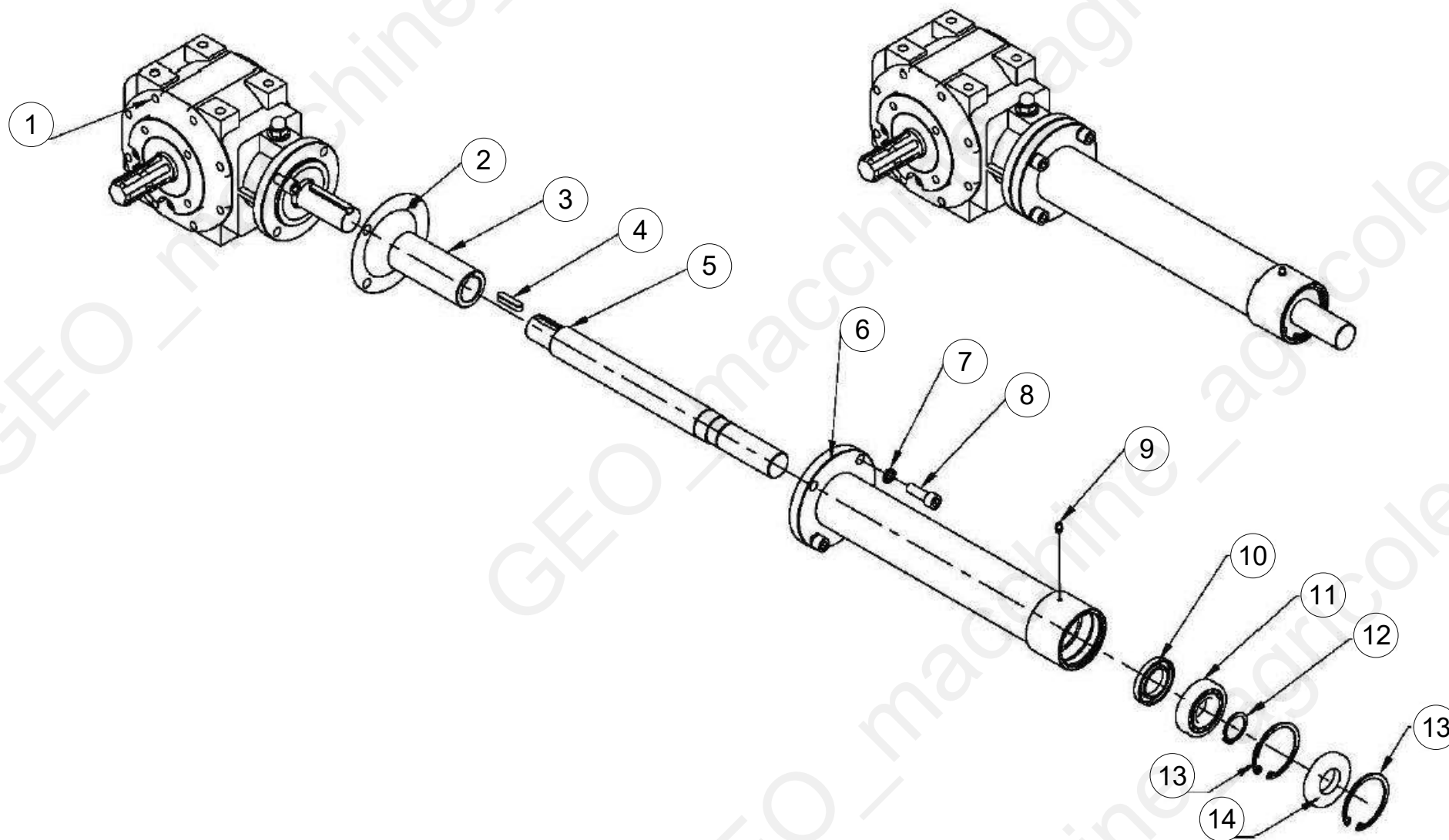


Pos	Code	Description	NOTE	Q.
2	EFGC125.024	Gearbox support		1
3	EFGC125.125	Bottom plate		1
4	GB/T96.2-2002-12	Plain washer 12		9
5	GB/T93-1987-12	Spring washer 12		12
6	GB5783-86/M12x35	Bolt M12x35		24
7	GB/T889.1-2000-M12	Locknut M12		12
8	EFGC125.120	Tension plate		1
9	EFG120.106.2	Big belt pulley 170mm 2 grooves		1
9	EFG120.106.3	Big belt pulley 170mm 3 grooves		1
9	EFG120.106.4	Big belt pulley 170mm 4 grooves		1
10	GB/1154-17.39	BELT SP B 39 (991Li)		4
11	JB/T7934Z3/35X60	Swellable sleeve 35X60		2
12	GB5783-86/M14X35	Bolt M14x35		2
13	GB/T96.2-2002-14	Plain washer 14		2
14	GB/T889.1-2000-14	Locking nut M14		2
15	EFGC125.131	Supporting frame Bracket		1
16	EFGC125.111	Supporting frame		1
17	1G135.00.107	Plug Pin		1
18	1G-150-01-142	R Pin		1
19	GB/T5783-1986	Bolt M12X25		2
20	GB/T5786-2000-M16X50	Bolt M16X1.5x50		1
21	GB/T6173-2000-M16x1.5	Nut M16x1.5		1
22	EFGC105.104	Shaft for fender EFGC105		0
22	EFGC125.104	Shaft for fender 125		0
22	EFGC145.104	Shaft for fender 145		0

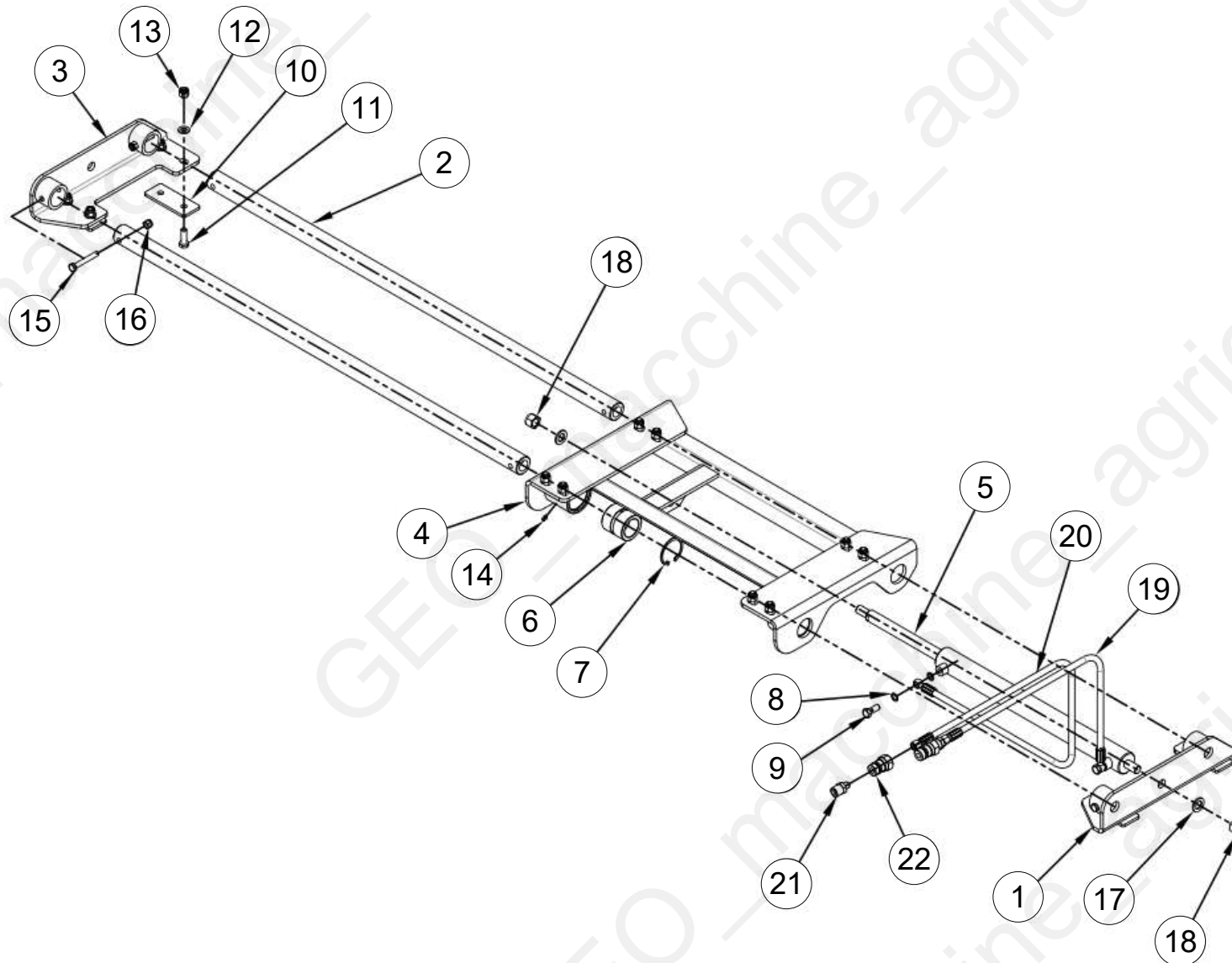
Pos	Code	Description	NOTE	Q.
22	EFGC155.104	Shaft for fender 155		0
22	EFGC165.104	Shaft for fender 165		0
22	EFGC175.104	Shaft for fender 175		0
22	EFGC185.104	Shaft for fender EFGC185		0
22	EFGC195.104	Shaft for fender EFGC195		0
23	EFGC125.113	Fender		17
24	EFGC125.114	Fender Narrow		1
25	GB/T879.2-2000	Elastic cylindrical pin 4x22		2
26	GB/T97.1-1985-10	Plain washer 10		22
27	EFGC105.011	cover weldment 105		1
27	EFGC125.011	cover weldment 125		1
27	EFGC145.011	cover weldment 145		1
27	EFGC155.011	cover weldment 155		1
27	EFGC165.011	cover weldment 165		1
27	EFGC175.011	cover weldment 175		1
27	EFGC185.011	cover weldment 185		1
27	EFGC195.011	cover weldment 195		1
28	GEO.500.10	GEO BELT COVER 500H 10cm		1
28	GEO.500.12	GEO BELT COVER 500H 12cm		1
28	GEO.500.8	GEO BELT COVER 500H 8cm		1
29	EFGC125.014	Base plate (L)		1
30	EFGC125.015	Base plate (R)		1
31	EFGCHM120.014	Hanging weldment		1
32	JB/T7940.1-1995-M8	Oil Cup M8		4
33	EFG120.105.2	small belt pulley 120mm 2 grooves		1

Pos	Code	Description	NOTE	Q.
33	EFG120.105.3	small belt pulley 120mm 3 grooves		1
33	EFG120.105.4	small belt pulley 120mm 4 grooves		1
34	RK120.109.2	Spacer lower for Pulley 2 grooves		1
34	RK120.109.3	Spacer lower for Pulley 3 grooves		1
34	RK120.109.4	Spacer lower for Pulley 4 grooves		1
35	GB/T13871-55X80X8	Oil seal FB55X80X8		1
36	UC207	Bearing UC207		2
37	EFGC125.115	Flange Bearing UC 207		2
38	EFGC105.018	Blade axle weldment 105		1
38	EFGC125.018	Blade axle weldment 125		1
38	EFGC145.018	Blade axle weldment 145		1
38	EFGC155.018	Blade axle weldment 155		1
38	EFGC165.018	Blade axle weldment 165		1
38	EFGC175.018	Blade axle weldment 175		1
38	EFGC185.018	Blade axle weldment 185		1
38	EFGC195.018	Blade axle weldment 195		0
39	GB/T889.1-2000-8	Locking nut M8		2
40	EFGC.100.00.102	Blade Ø16mm		56
40	EFGC.100.00.107	Hammer Ø16mm		1
41	EFGC125.119	Sleeve		56
42	GB/T.5785-2000	Bolt M16x1.5x85		28
43	GB/T.889.2-2000-16	Locking nut M16X1.5		28
44	EFG120.101	Supporting for roller (R)		1
45	EFGC125.107	Bearing seat UCF205		2
46	UC205	Bearing UC205		2

Pos	Code	Description	NOTE	Q.
47	EFGC105.017	Roller weldment 105		0
47	EFGC125.017	Roller weldment 125		1
47	EFGC145.017	Roller weldment 145		0
47	EFGC155.017	Roller weldment 155		0
47	EFGC165.017	Roller weldment 165		0
47	EFGC175.017	Roller weldment 175		0
47	EFGC185.017	Roller weldment 185		0
47	EFGC195.017	Roller weldment 195		0
48	EFGC105.016	Mud shield 105		0
48	EFGC125.016	Mud shield 125		1
48	EFGC145.016	Mud shield 145		0
48	EFGC155.016	Mud shield 155		0
48	EFGC165.016	Mud shield 165		0
48	EFGC175.016	Mud shield 175		0
48	EFGC185.016	Mud shield 185		0
48	EFGC195.016	Mud shield 195		0
49	GB/T.70.3-2000-M8x25	Hex.head bolt M8X25		10
50	EFG120.102	Supporting for roller (L)		1



Pos	Code	Description	NOTE	Q.
1	XH50.300Z.02W	Gearbox assembly		1
2	EFGC125.166	Paper gasket		1
3	EFGC125.167	Connected sleeve		1
4	GB/T.1096-1979-10x40	Key A10x40		1
5	EFGCN.35.339	Shaft 105		1
5	EFGCN.35.425	Shaft 125		0
5	EFGCN.35.440	Shaft 145-165		0
5	EFGCN.35.455	Shaft 175		0
5	EFGCN.35.555	Shaft 185-195		0
6	EFGCN.72.358	Shaft tube weldment 105		1
6	EFGCN.72.444	Shaft tube weldment 125-175		0
6	EFGCN.72.544	Shaft tube weldment 185-195		0
7	GB/T93-1987-12	Spring washer 12		4
8	GB5783-86/M12x35	Bolt M12x35		4
9	JB/T7940.1-1995-M6	Oil cup M6		1
10	GB/T13871-38X62X8	Oil seal FB38X62X8		1
11	GB/T.283-94	Bearing NUP207E		1
12	GB/T893.1-1986-35	Circlip 35		1
13	GB/T893.1-1986-72	Circlip 72		1
14	GB/T13871-35X72X10	Oil seal FB35X72X10		1



Machine: EFGCH

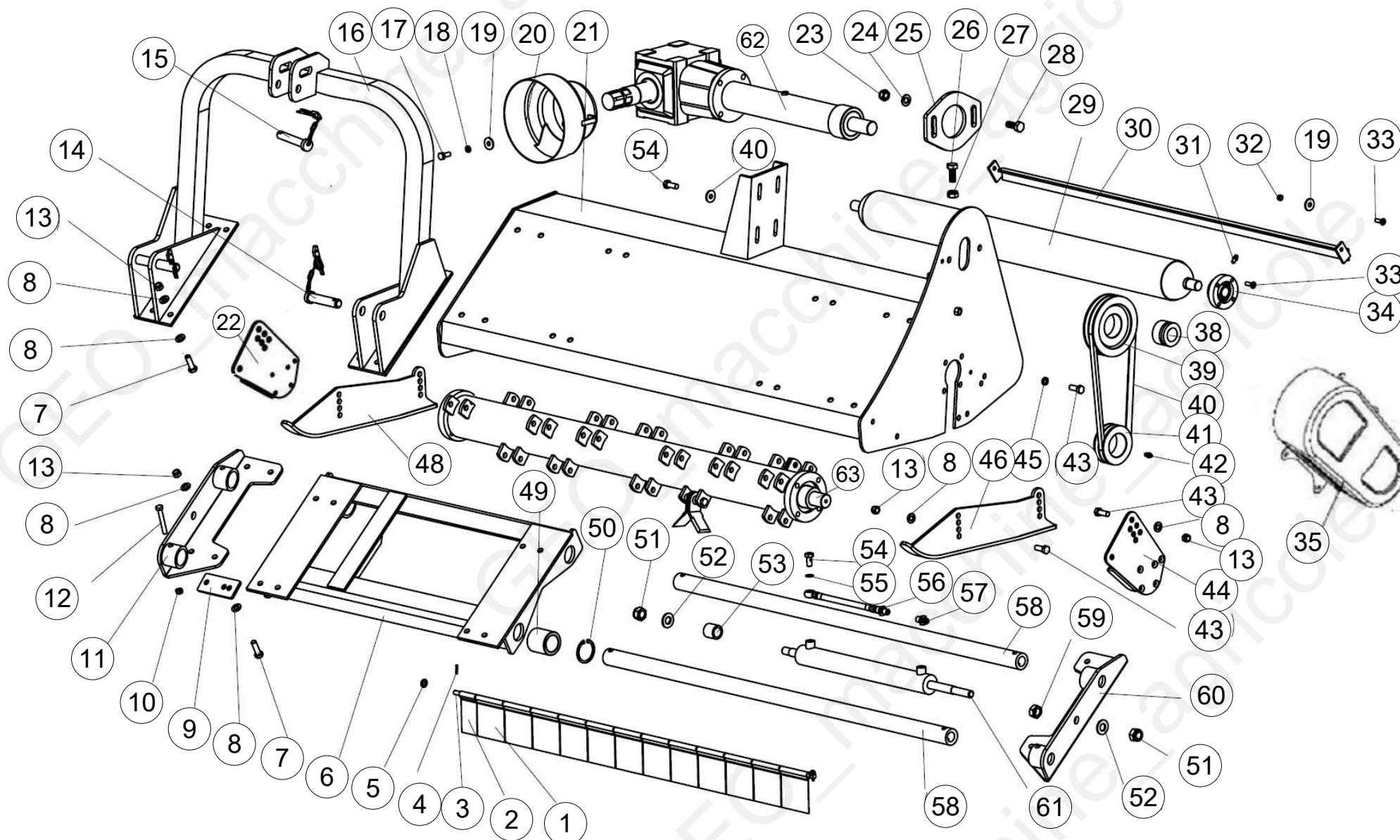
Assembly: KIT_EFGCH



Pos	Code	Description	NOTE	Q.
1	EFGCNH125.082	Left bracket,weldment		1
2	EFGCN125.801	Guide rail		2
3	EFGCNH125.083	Right bracket,weldment		1
4	EFGCNH125.081	Offset frame,weldment		1
5	EFGCNH125.080	Cylinder		1
6	EFGCH125.107	Nylon bush		3
7	GB893.2-60	Internal circlip 60		4
8	JB/T982-12	Seal gasket 12		4
9	GB3750.3-M12x1.25x30	Hollow bolt M12x1.25x30		2
10	EFGC125.103	Splint		4
11	GB/T5783-M12x35	Bolt M12x35		1
12	GB/T97.1-12	Plain washer 12		16
13	GB/T889.1-M12	LOCK NUT M12		16
14	GB1152-M6	Grease Nipple M6		4
15	GB/T5782-M10x70	Bolt M10x70		4
16	GB/T889.1-M10	LOCKNUT M10		4
17	GB/T97.1-18	Plain washer 18		2
18	GB/T889.2-M18x1.5	Lock nut M18x1.5		2
19	EFGCNH125.086	Hose		1
20	EFGCNH125.087	Hose		1
21	AGL125.103	Pin (S)		2
22	KJ-R1/2-M	Quick-change connector R1/2-male		2

EFGCH 2013 2016



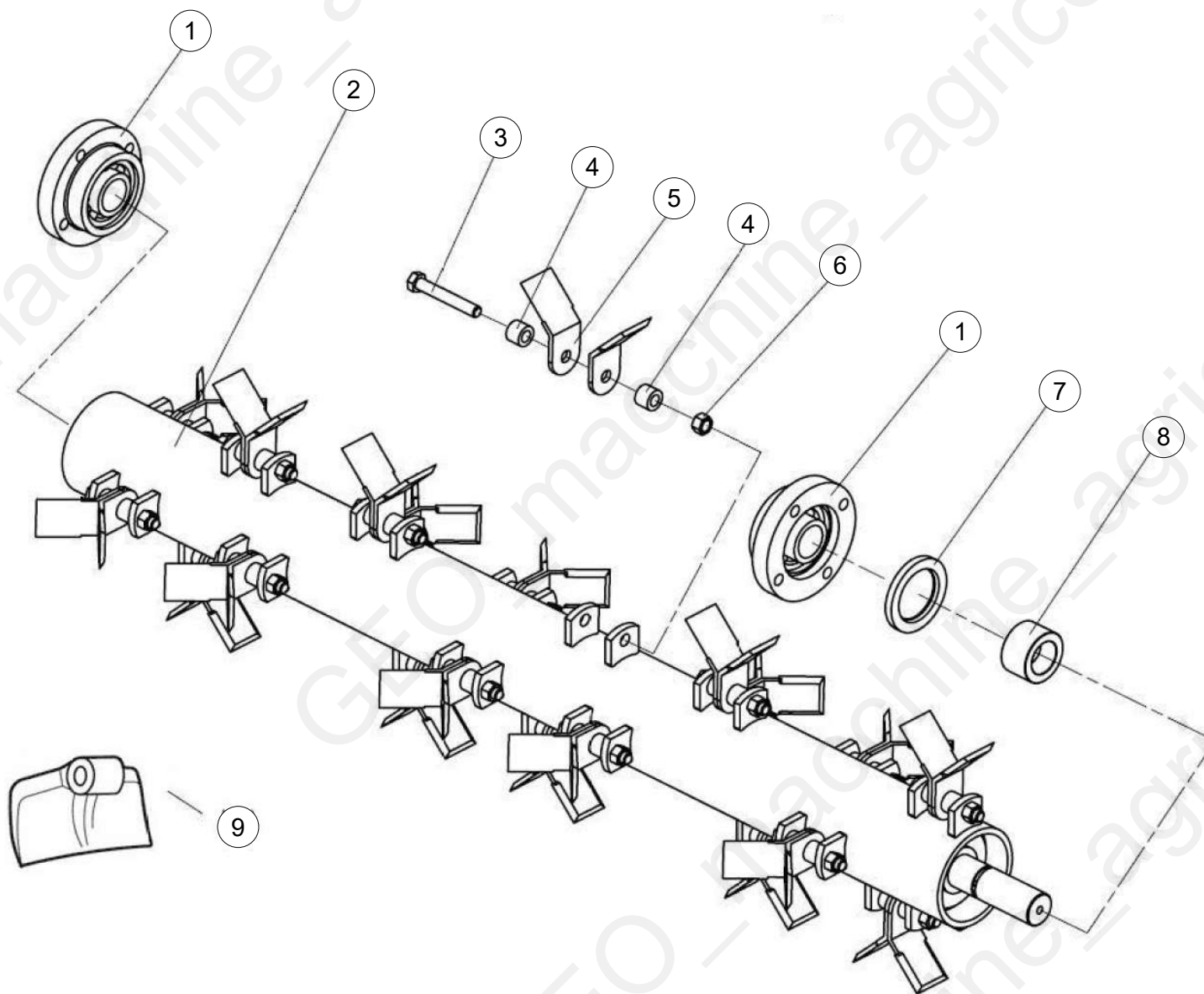


Pos	Code	Description	NOTE	Q.
1	EF100.00.122	Fender		13
2	EF100.00.121	Fender Narrow		1
3	EF105.00.123	Shaft for fender 105		1
3	EF125.00.123	Shaft for fender 125		1
3	EF145.00.123	Shaft for fender 145		1
3	EF155.00.123	Shaft for fender 155		1
3	EF165.00.123	Shaft for fender 165		1
3	EF175.00.123	Shaft for fender 175		1
3	EF185.00.123	Shaft for fender 185		1
3	EF195.00.123	Shaft for fender 195		0
4	GB879-86/4X22	Elastic cylindrical pin 4x22		2
5	GB97.1-85/10	Plain washer 10		18
6	EFGCHM120.013	Slippage bracket		1
7	GB5783-86/M12x40	Bolt M12x40		14
8	GB97.1-85/12	Plain washer 12		52
9	EFGCHM120.101	Splint		4
10	GB6184-86/M10	Locking nut M10		4
11	EFGCNH125.083	Right bracket,weldment		1
12	GB5783-86/M10x70	Bolt M10X70		4
13	GB6184-86/M12	Locking nut M12		50
14	RKN120.018	Lower Pin		2
15	EF100.00.019	Support		1
16	EFGCHM120.014	Hanging weldment		1
17	GB5783-86/M10X25	Bolt M10x25		4
18	GB93-87-10	Spring lock washer 10		4

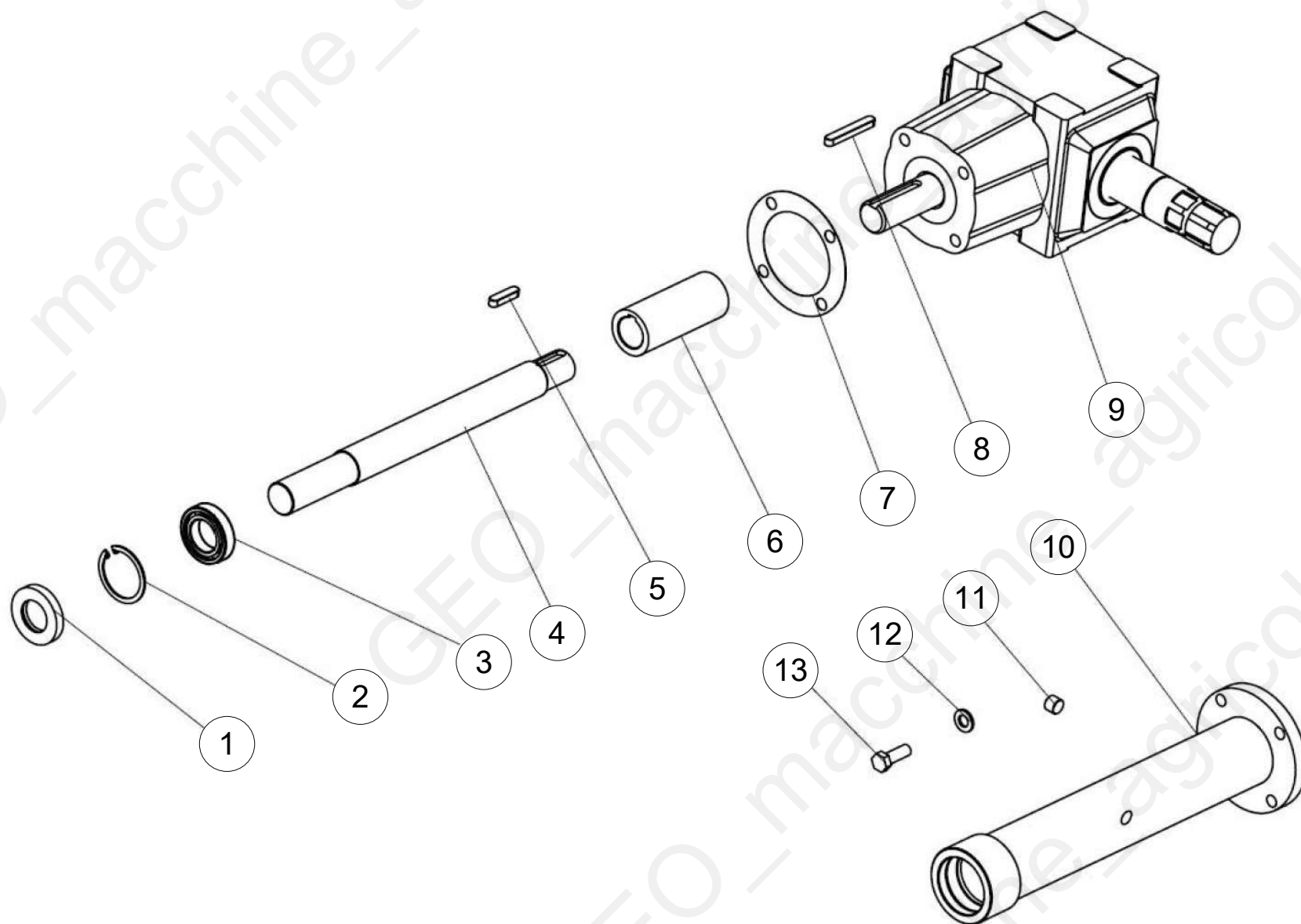
Pos	Code	Description	NOTE	Q.
19	GB96-85-10	Plain washer 10		4
20	EF100.00.112	Guard Shade		1
21	EFGCHM120.011.105	The cover weldment 105		1
21	EFGCHM120.011.125	The cover weldment 125		1
21	EFGCHM120.011.145	The cover weldment 145		1
21	EFGCHM120.011.155	The cover weldment 155		1
21	EFGCHM120.011.165	The cover weldment 165		1
21	EFGCHM120.011.175	The cover weldment 175		1
21	EFGCHM120.011.185	The cover weldment 185		1
21	EFGCHM120.011.195	The cover weldment 195		1
22	EFG120.101	Supporting for roller (R)		1
23	GB6184-86/M14	Locking nut M14		2
24	GB97.1-85/14	Plain washer 14		2
25	EFGC120.102	Tension plate		1
26	GB5786-86/M16X1.5X50	Bolt M16X1.5X50		1
27	GB6173-86/M16x1.5	Nut M16x1.5		1
28	GB5783-86/M14X35	Bolt M14x35		2
29	EFG120.012.105	Roller weldment 105		1
29	EFG120.012.125	Roller weldment 125		1
29	EFG120.012.145	Roller weldment 145		1
29	EFG120.012.155	Roller weldment 155		1
29	EFG120.012.165	Roller weldment 165		1
29	EFG120.012.175	Roller weldment 175		1
29	EFG120.012.185	Roller weldment 185		1
29	EFG120.012.195	Roller weldment 195		1

Pos	Code	Description	NOTE	Q.
30	EFG105.00.024	Mud shield 105		1
30	EFG125.00.024	Mud shield 125		1
30	EFG145.00.024	Mud shield 145		1
30	EFG155.00.024	Mud shield 155		1
30	EFG165.00.024	Mud shield 165		1
30	EFG175.00.024	Mud shield 175		1
30	EFG185.00.024	Mud shield 185		1
30	EFG195.00.024	Mud shield 195		1
31	GB1152-89/M6	Grease nipple M6		2
32	GB6184-86/M8	Locking nut M8		2
33	GB2673-86/M8X25	Bolt M8x25		10
34	GEO_UCF205	Bearing with flange UC205		2
35	GEO.500.10	GEO BELT COVER 500H 10cm		1
35	GEO.500.12	GEO BELT COVER 500H 12cm		1
35	GEO.500.8	GEO BELT COVER 500H 8cm		1
36	GB96-85-12	Plain washer 12		5
37	GB5782-86/M12x80	Bolt M12x80		21
38	JB/T7934Z3/35X60	Swellable sleeve 35X60		2
39	EFG120.106.2	Big belt pulley 170mm 2 grooves		1
39	EFG120.106.3	Big belt pulley 170mm 3 grooves		1
39	EFG120.106.4	Big belt pulley 170mm 4 grooves		1
40	GB/1154-17.39	BELT SP B 39 (991Li)		2
41	EFG120.105.2	small belt pulley 120mm 2 grooves		1
41	EFG120.105.3	small belt pulley 120mm 3 grooves		1
41	EFG120.105.4	small belt pulley 120mm 4 grooves		1

Pos	Code	Description	NOTE	Q.
42	GB1152-89/M8X1	Grease nipple M8		2
43	GB2673-M8X30	Bolt M8x30		16
44	EFG120.102	Supporting for roller (L)		1
45	GB93-87-12	Spring lock washer 12		12
46	EFGC125.014	Base plate (L)		1
48	EFGC125.015	Base plate (R)		1
49	EFGCH120.103	Nylon bush		4
50	GB893.1-86/60	Circlip 60		4
51	GB6184-86/M18X1.5	Locking nut M18X1.5		2
52	GB97.1-85/18	Plain washer 18		2
53	EFGCH120.101	Sleeve		1
54	GB3451-83-M12X1.25	Bolt M12X1.25		2
55	GB3451-86/12	Washer 12		4
56	EFGCH120.011	Oil pipe		2
57	QC-R1/2-M	Quick Connector R1/2		2
58	EFGCH120.104	Guide rail		2
59	GB6173-86/M18X1.5	Nut M18X1.5		1
60	EFGCNH125.082	Left bracket,weldment		1
61	EFGCH120.012	Slippage cylinder		1



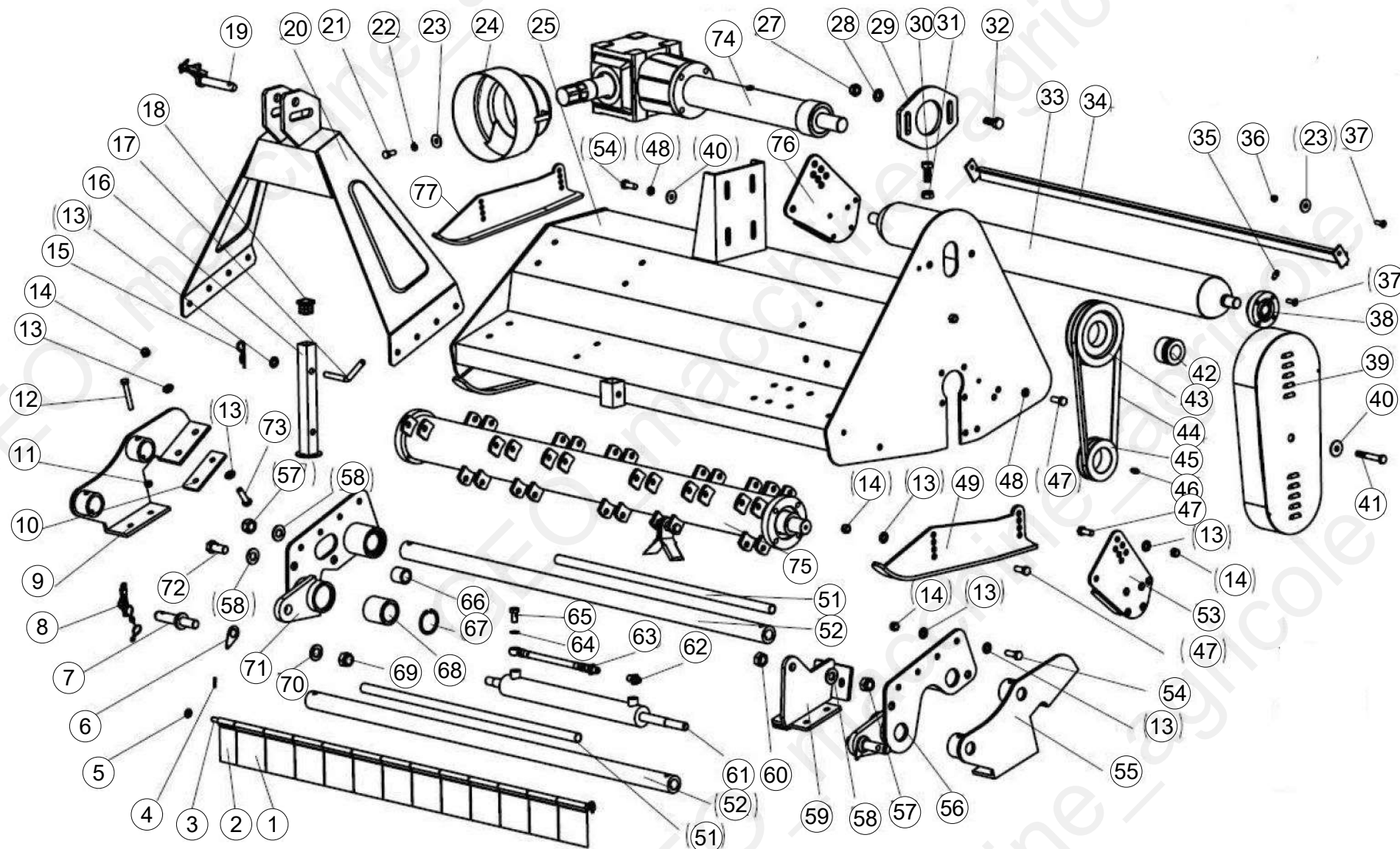
Pos	Code	Description	NOTE	Q.
1	GEO_UCF207	Bearing with flange UC207-Z		2
2	EFG120.013.105	Blade axle weldment 105		1
2	EFG120.013.125	Blade axle weldment 125		1
2	EFG120.013.145	Blade axle weldment 145		1
2	EFG120.013.155	Blade axle weldment 155		1
2	EFG120.013.165	Blade axle weldment 165		1
2	EFG120.013.175	Blade axle weldment 175		1
2	EFG120.013.185	Blade axle weldment 185		1
2	EFG120.013.195	Blade axle weldment 195		1
3	GB5782-86/M16x80	Blot M16x80		0
4	EF.100.00.101	Sleeve 16		0
5	EFGC.100.00.102	Blade Ø16mm		0
6	GB/T889.1/M16	Lock Nut M16		0
7	GB13871-94-55X80X8	Oil seal FB55x80x8		1
8	RK120.109.2	Spacer lower for Pulley 2 grooves		1
8	RK120.109.3	Spacer lower for Pulley 3 grooves		1
8	RK120.109.4	Spacer lower for Pulley 4 grooves		1
9	EFGC.100.00.107	Hammer Ø16mm		0



Pos	Code	Description	NOTE	Q.
1	GB13871-94-35×62×10	Oil seal B 35×62×10		1
2	GB893.1-86/62	Circlip 62		1
3	GB276-6207	Bearing 6207		1
4	EFGC120.133.1	Shaft 105		1
4	EFGC120.133.2	Shaft 125-155		1
4	EFGC120.133.3	Shaft 165-175		1
5	GB1096-79/A10X40	Key A10X40		1
6	EFGC120.132	Connected sleeve		1
7	EFGC120.131	Paper gasket		1
8	GB1096-79/A10X70	Key A10x70		1
9	XH50.300Z.02W	Gearbox assembly		1
10	EFGC120.018.1	Shaft tube weldment 105		1
10	EFGC120.018.2	Shaft tube weldment 125-175		1
11	ZBT.32001.3-87	Retainer ZG3/8"		2
12	GB93-87-12	Spring lock washer 12		4
13	GB5783-86/M12x35	Bolt M12×35		4

EFGCH 2009 2012





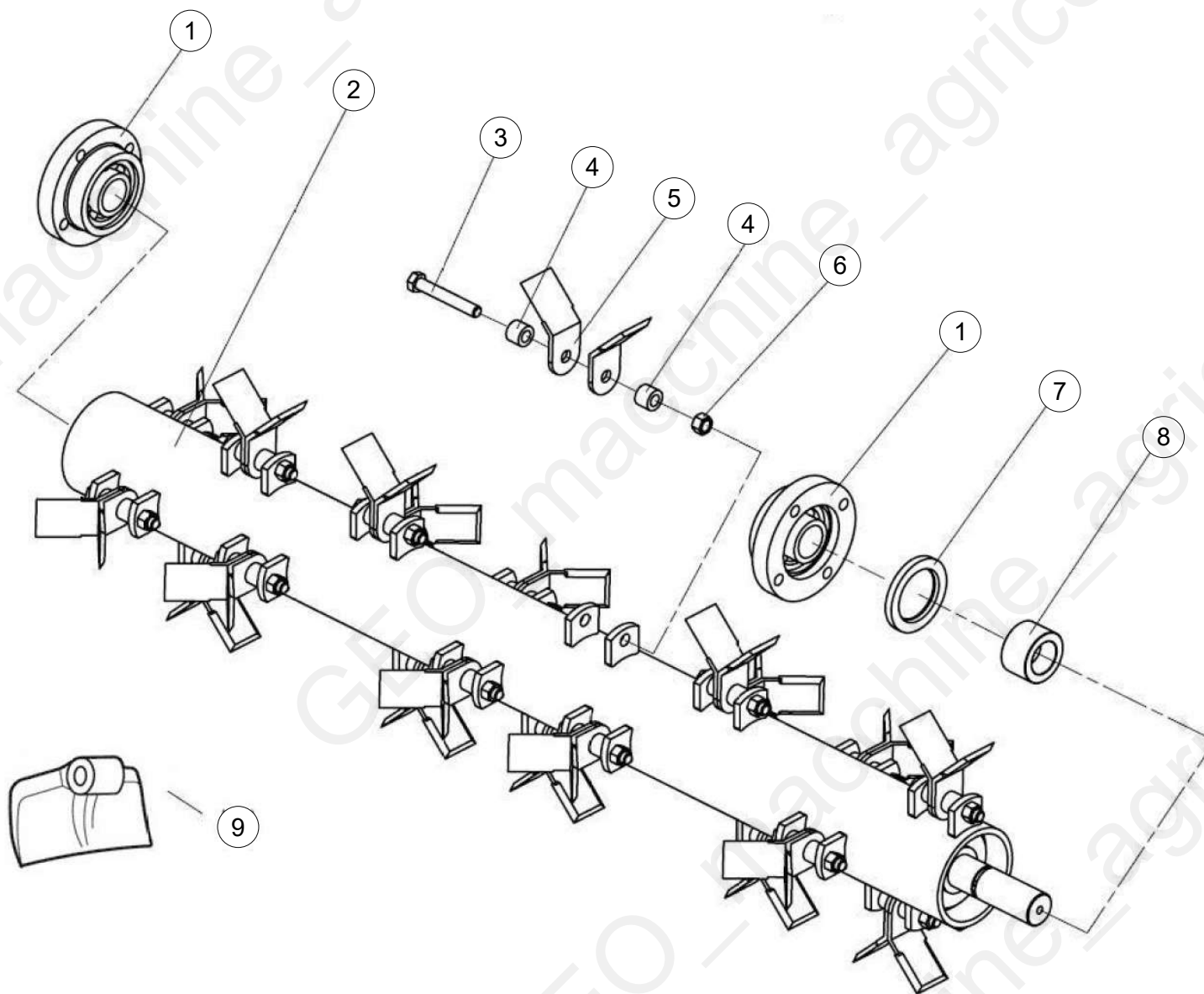
Pos	Code	Description	NOTE	Q.
1	EF100.00.122	Fender		13
2	EF100.00.121	Fender Narrow		1
3	EF105.00.123	Shaft for fender 105		1
3	EF125.00.123	Shaft for fender 125		1
3	EF145.00.123	Shaft for fender 145		1
3	EF155.00.123	Shaft for fender 155		1
3	EF165.00.123	Shaft for fender 165		1
3	EF175.00.123	Shaft for fender 175		1
3	EF185.00.123	Shaft for fender 185		1
3	EF195.00.123	Shaft for fender 195		1
4	GB879-86/4X22	Elastic cylindrical pin 4x22		2
5	GB97.1-85/10	Plain washer 10		18
6	FMR120.105	Lockpin plate		2
7	FMR120.104	Pin for lifting(D)		2
8	200.56.011-1	Lockpin		2
9	EFGCH120.018	Connecting bracket(L)		1
10	EFGC120.101	Splint		7
11	GB6184-86/M10	Locking nut M10		4
12	GB5783-86/M10x70	Bolt M10X70		4
13	GB97.1-85/12	Plain washer 12		53
14	GB6184-86/M12	Locking nut M12		50
15	1G-150-01-142	R Pin		1
16	EF100.00.027	Supporting frame		1
17	EF100.00.111	square angle pin		1
18	EF100.00.117	Cover		1

Pos	Code	Description	NOTE	Q.
19	EF100.00.019	Support		1
20	EFGCH120.016	Hanging weldment		1
21	GB5783-86/M10X25	Bolt M10x25		4
22	GB93-87-12	Spring lock washer 12		4
23	GB96-85-10	Plain washer 10		4
24	EF100.00.112	Guard Shade		1
25	EFGC120.011.105	The cover weldment 105		1
25	EFGC120.011.125	The cover weldment 125		1
25	EFGC120.011.145	The cover weldment 145		1
25	EFGC120.011.155	The cover weldment 155		1
25	EFGC120.011.165	The cover weldment 165		1
25	EFGC120.011.175	The cover weldment 175		1
25	EFGC120.011.185	The cover weldment 185		0
25	EFGC120.011.195	The cover weldment 195		0
27	GB6184-86/M14	Locking nut M14		2
28	GB97.1-85/14	Plain washer 14		2
29	EFGC120.102	Tension plate		1
30	GB5786-86/M16X1.5X50	Bolt M16X1.5X50		1
31	GB6173-86/M16x1.5	Nut M16x1.5		1
32	GB5783-86/M14X35	Bolt M14x35		2
33	EFG120.012.105	Roller weldment 105		1
33	EFG120.012.125	Roller weldment 125		1
33	EFG120.012.145	Roller weldment 145		1
33	EFG120.012.155	Roller weldment 155		1
33	EFG120.012.165	Roller weldment 165		1

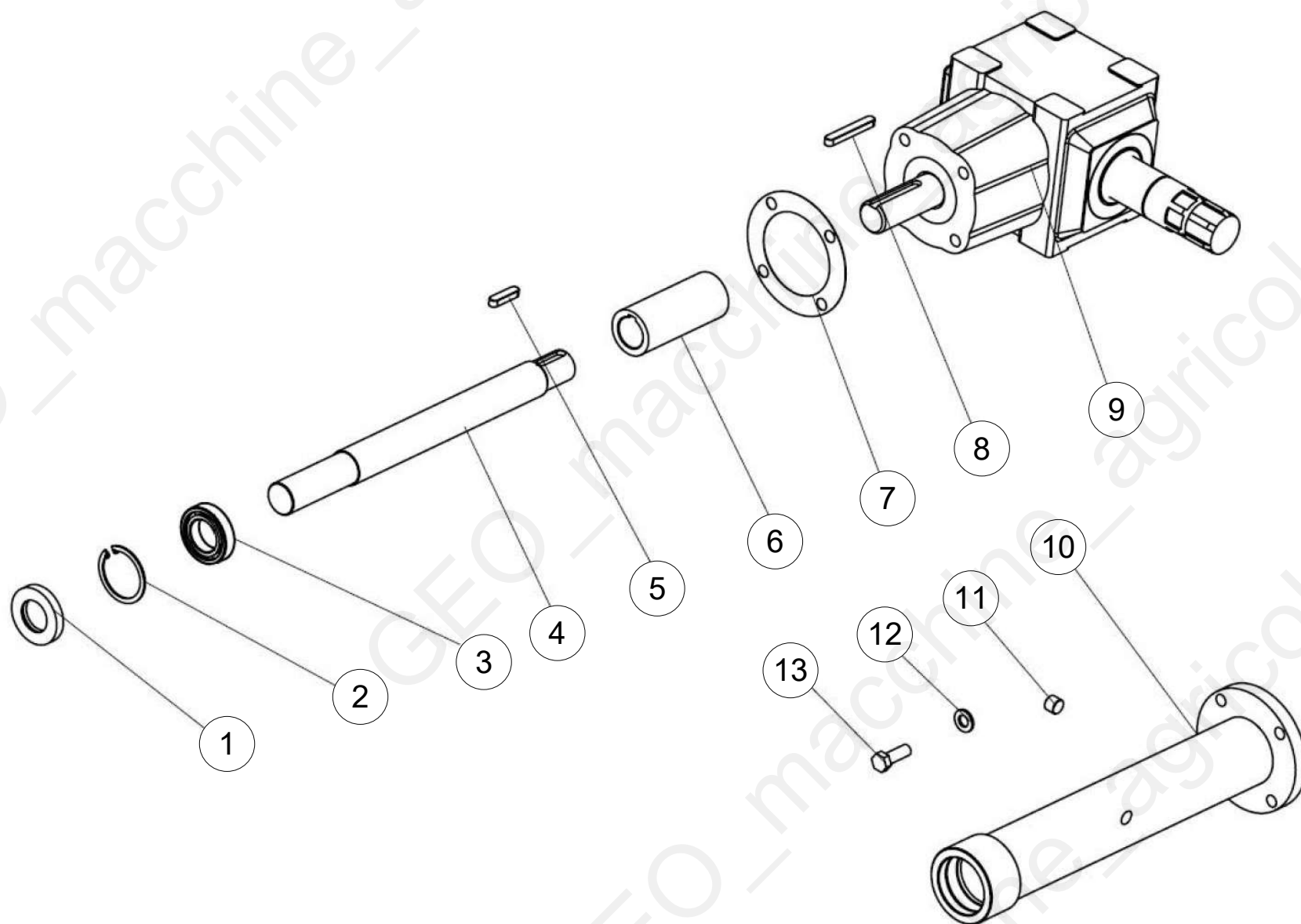
Pos	Code	Description	NOTE	Q.
33	EFG120.012.175	Roller weldment 175		1
33	EFG120.012.185	Roller weldment 185		1
33	EFG120.012.195	Roller weldment 195		1
34	EF105.00.024	Mud shield 105		1
34	EF125.00.024	Mud shield 125		1
34	EF145.00.024	Mud shield 145		1
34	EF155.00.024	Mud shield 155		1
34	EF165.00.024	Mud shield 165		1
34	EF175.00.024	Mud shield 175		1
34	EF185.00.024	Mud shield 185		1
34	EF195.00.024	Mud shield 195		1
35	GB1152-89/M6	Grease nipple M6		2
36	GB6184-86/M8	Locking nut M8		2
37	GB2673-86/M8X25	Bolt M8x25		10
38	GEO_UCF205	Bearing with flange UC205		2
39	EFGC125.012.10	Belt cover OLD 100 mm		1
39	EFGC125.012.12	Belt cover OLD 120 mm		1
39	EFGC125.012.8	Belt cover OLD 80 mm		0
40	GB96-85-12	Plain washer 12		5
41	GB5782-86/M12x80	Bolt M12x80		21
42	JB/T7934Z3/35X60	Swellable sleeve 35X60		2
43	EFG120.106.2	Big belt pulley 170mm 2 grooves		1
43	EFG120.106.3	Big belt pulley 170mm 3 grooves		1
43	EFG120.106.4	Big belt pulley 170mm 4 grooves		1
44	GB/1154-17.39	BELT SP B 39 (991Li)		2

Pos	Code	Description	NOTE	Q.
45	EFG120.105.2	small belt pulley 120mm 2 grooves		1
45	EFG120.105.3	small belt pulley 120mm 3 grooves		1
45	EFG120.105.5			1
46	GB1152-89/M8X1	Grease nipple M8		2
47	GB5783-86/M12x30	Bolt M12x30		16
48	GB93-87-12	Spring lock washer 12		12
49	EFGC125.014	Base plate (L)		1
51	EFGCH120.102.1	Supporting tube 105		2
51	EFGCH120.102.2	Supporting tube 125-175		2
52	EFGCH120.104.1	Guide tube 105		2
52	EFGCH120.104.2	Guide tube 125-175		2
53	EFG120.102	Supporting for roller (L)		1
54	GB5783-86/M12x35	Bolt M12x35		12
55	EFGCH120.014	Connecting bracket(R)		1
56	EFGCH120.015	Slippage bracket(R)		1
57	GB6184-86/M18X1.5	Locking nut M18X1.5		2
58	GB97.1-85/18	Plain washer 18		6
59	EFGCH120.013	Cylinder seat		1
60	GB6173-86/M18X1.5	Nut M18X1.5		1
61	EFGCH125.011	Slippage cylinder		1
62	QC-R1/2-M	Quick Connector R1/2		2
63	EFGCH120.011	Oil pipe		2
64	GB3451-86/12	Washer 12		4
65	GB3451-83-M12X1.25	Bolt M12X1.25		2
66	EFGCH120.101	Sleeve		1

Pos	Code	Description	NOTE	Q.
67	EF100.00.106-1	Circlip 60		4
68	EFGCH120.103	Nylon bush		4
69	GB6184-86/M20x1.5	Locking nut M20X1.5		2
70	GB97.1-85/20	Plain washer 20		2
71	EFGCH120.017	Slippage bracket(L)		1
72	GB5783-86/M18x40	Bolt M18X40		4
73	GB5783-86/M12x40	Bolt M12x40		14
76	EFG120.101	Supporting for roller (R)		1
77	EFGC125.015	Base plate (R)		1



Pos	Code	Description	NOTE	Q.
1	GEO_UCF207	Bearing with flange UC207-Z		2
2	EFG120.013.105	Blade axle weldment 105		1
2	EFG120.013.125	Blade axle weldment 125		1
2	EFG120.013.145	Blade axle weldment 145		1
2	EFG120.013.155	Blade axle weldment 155		1
2	EFG120.013.165	Blade axle weldment 165		1
2	EFG120.013.175	Blade axle weldment 175		1
2	EFG120.013.185	Blade axle weldment 185		1
2	EFG120.013.195	Blade axle weldment 195		1
3	GB5782-86/M16x80	Blot M16x80		0
4	EF.100.00.101	Sleeve 16		0
5	EFGC.100.00.102	Blade Ø16mm		0
6	GB/T889.1/M16	Lock Nut M16		0
7	GB13871-94-55X80X8	Oil seal FB55x80x8		1
8	RK120.109.2	Spacer lower for Pulley 2 grooves		1
8	RK120.109.3	Spacer lower for Pulley 3 grooves		1
8	RK120.109.4	Spacer lower for Pulley 4 grooves		1
9	EFGC.100.00.107	Hammer Ø16mm		0



Pos	Code	Description	NOTE	Q.
1	GB13871-94-35×62×10	Oil seal B 35×62×10		1
2	GB893.1-86/62	Circlip 62		1
3	GB276-6207	Bearing 6207		1
4	EFGC120.133.1	Shaft 105		1
4	EFGC120.133.2	Shaft 125-155		1
4	EFGC120.133.3	Shaft 165-175		1
5	GB1096-79/A10X40	Key A10X40		1
6	EFGC120.132	Connected sleeve		1
7	EFGC120.131	Paper gasket		1
8	GB1096-79/A10X70	Key A10x70		1
9	XH50.300Z.02W	Gearbox assembly		1
10	EFGC120.018.1	Shaft tube weldment 105		1
10	EFGC120.018.2	Shaft tube weldment 125-175		1
11	ZBT.32001.3-87	Retainer ZG3/8"		2
12	GB93-87-12	Spring lock washer 12		4
13	GB5783-86/M12x35	Bolt M12×35		4