

Spare Part Book



PM



GEO Italy S.R.L.

Latest release: 16/03/2021

Via G. Abbate, 215, 14054 Castagnole delle Lanze AT

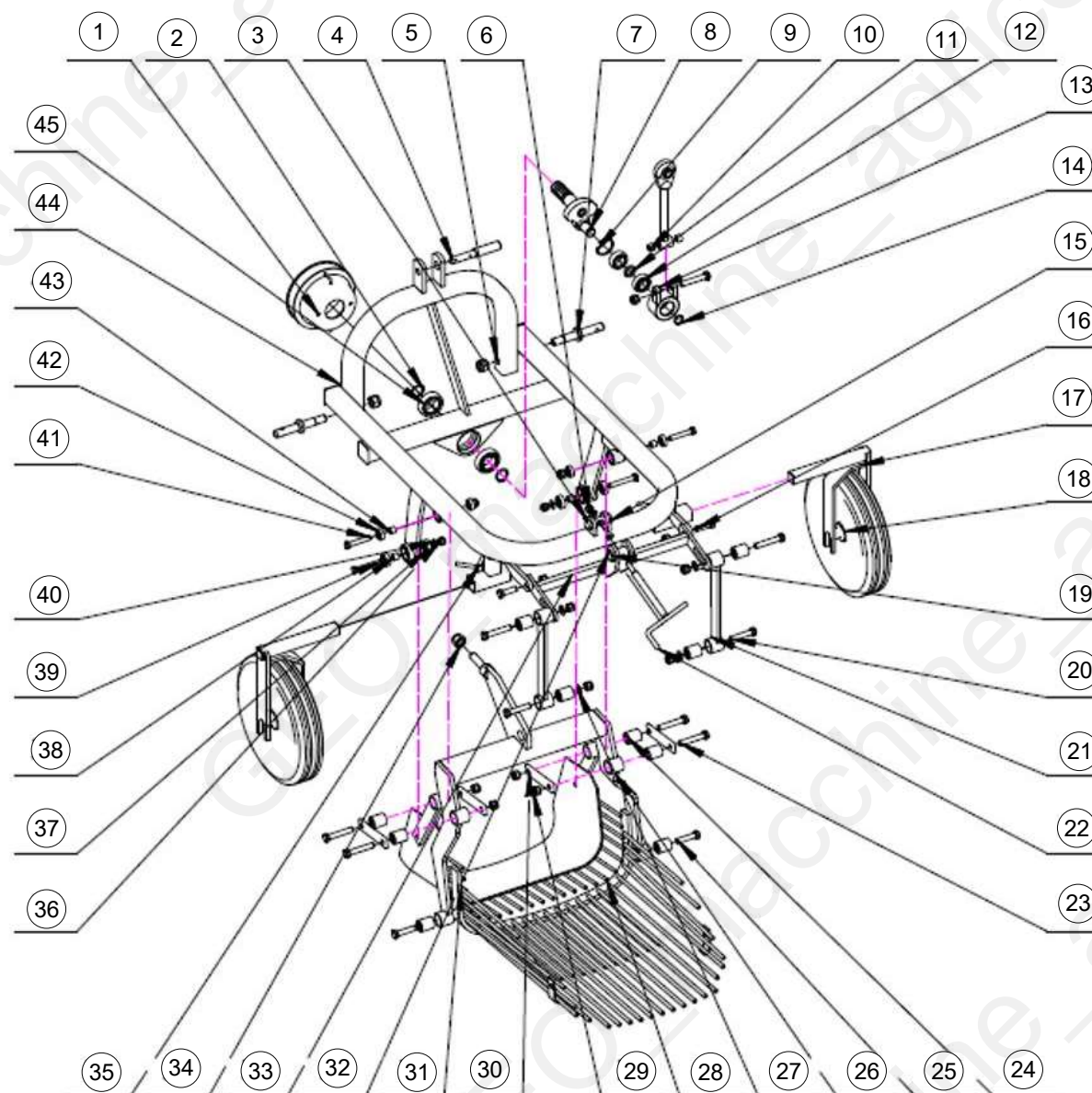
Page 1

Table of Contents

Tavola	Page
PM	3
PM 2014_2017	7

PM



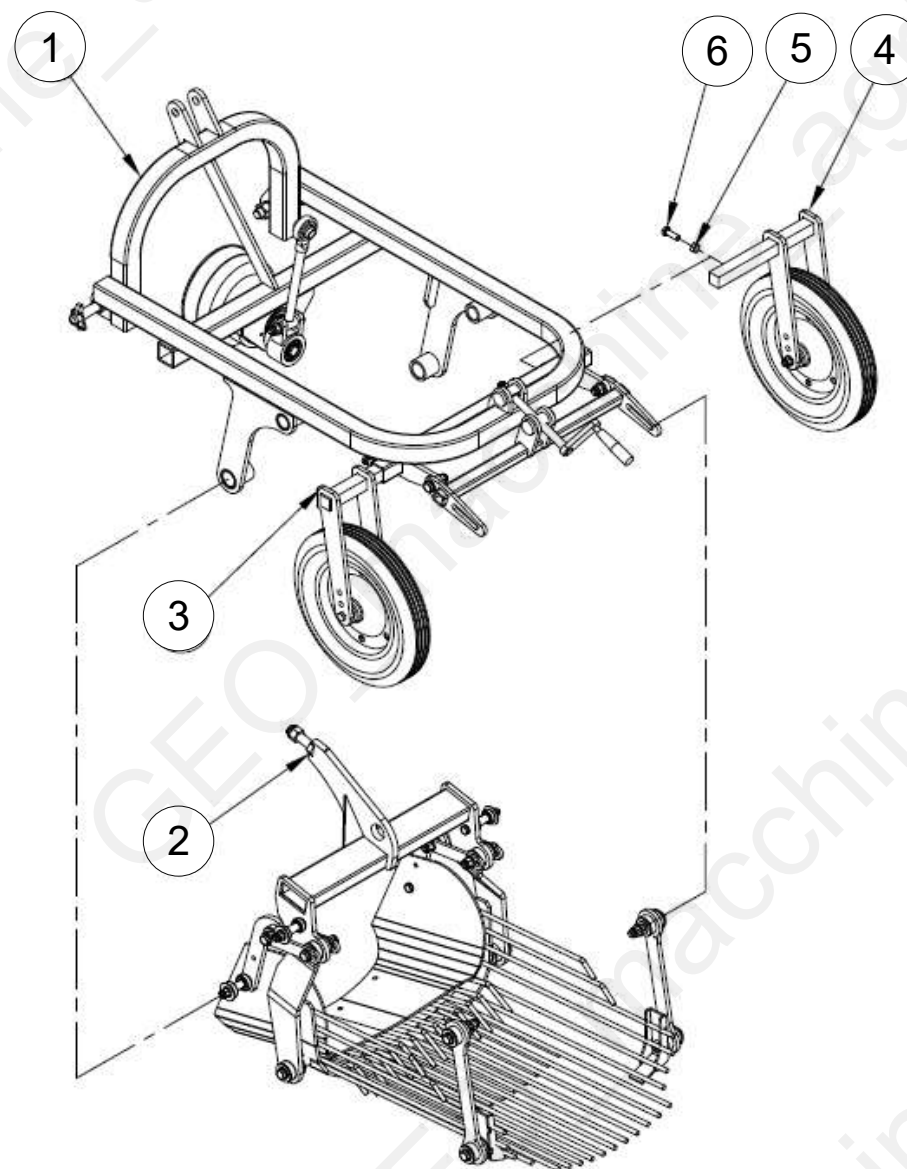


Pos	Code	Description	NOTE	Q.
1	4U50.00.012	PTO cover		1
2	GB.894.1-86-35	Circlip for shaft		2
3	GB/T.91.3.2.x.32	Cotter pin		2
4	4U50.00.002	TDJ14pin		1
5	4U50.01.000	Frame weldment		1
6	GB/T.889.1.M12x1.5	Hexagon locknut		1
7	200.56.011	Lock pin		2
7	4U50.00.001	TDJ13pin		2
8	4U50.04.000	Input shaft		1
9	GB.893.1-86-52	Circlips for hole		1
10	4U50.11.000	Joint bearing and weldments		1
11	4U50.00.009	Shaft sleeve		1
12	6205-Z.GB/T.276-94	deep groove ball bearing with seal		2
13	4U50.05.000	Connecting of PTO weldment		1
14	GB.894.1-86-25	Circlips for shaft		1
15	4U50.00.004	TDJ24		1
16	4U50.00.015	Bolt M14X45 for shaft		2
17	4U50.03.000	Frame weldment		2
18	4U50.00.013	Radial Tyre		2
19	4U50.00.005	TDJ28		1
20	4U50.00.017	Bolt M14X70 for shaft		2
21	4U50.09.000	Connecting rok		2
22	4U50.12.000	Adjusting device for Tailer part		1
23	4U50.00.018	Bolt M14X80 for shaft		7
24	4U50.00.011	Shock mitigating device		10

Pos	Code	Description	NOTE	Q.
25	4U50.00.011-1	nylon sleeve		2
25	GB/T.27-1998.M20x70	M20x1.5x70 hinge bolt		2
25	GB/T.97.1.20	flat gasket 20		2
26	4U50.06.000	Cont weldment frame		1
27	GB.955-87.14	Washer		6
28	4U50.07.000	Shovel weldment		1
29	GB/T.889.1.M14	Hexagon locknut		13
30	4U50.00.010	Clip		4
31	4U50.08.000	Dust filter		1
32	GB/T.91.4.x.36	Cotter pin		2
33	4U50.02.000	Adjusting weldment for frame		1
34	GB/T.889.1.M20x1.5	Hexagon locknut		3
35	4U50.10.000	Adjusting device for tyre		2
36	GB/T.889.1.M12	Locknut M12		2
37	6301-Z.GB/T.276-94	deep groove ball bearing with seal		4
38	4U50.00.006	TDJ35		2
39	4U50.00.014	Bolt M12X80 for shaft		2
40	GB.995-87.12	Washer		4
41	4U50.00.013.1	Bolt M12X70 for shaft		2
42	6201-Z.GB/T.276-94	deep groove ball bearing with seal		4
43	4U50.00.007	TDJ36		2
44	4U50.00.003	rubber band		4
45	6207-Z.GB/T.276-94	deep groove ball bearing with seal		2

PM 2014_2017



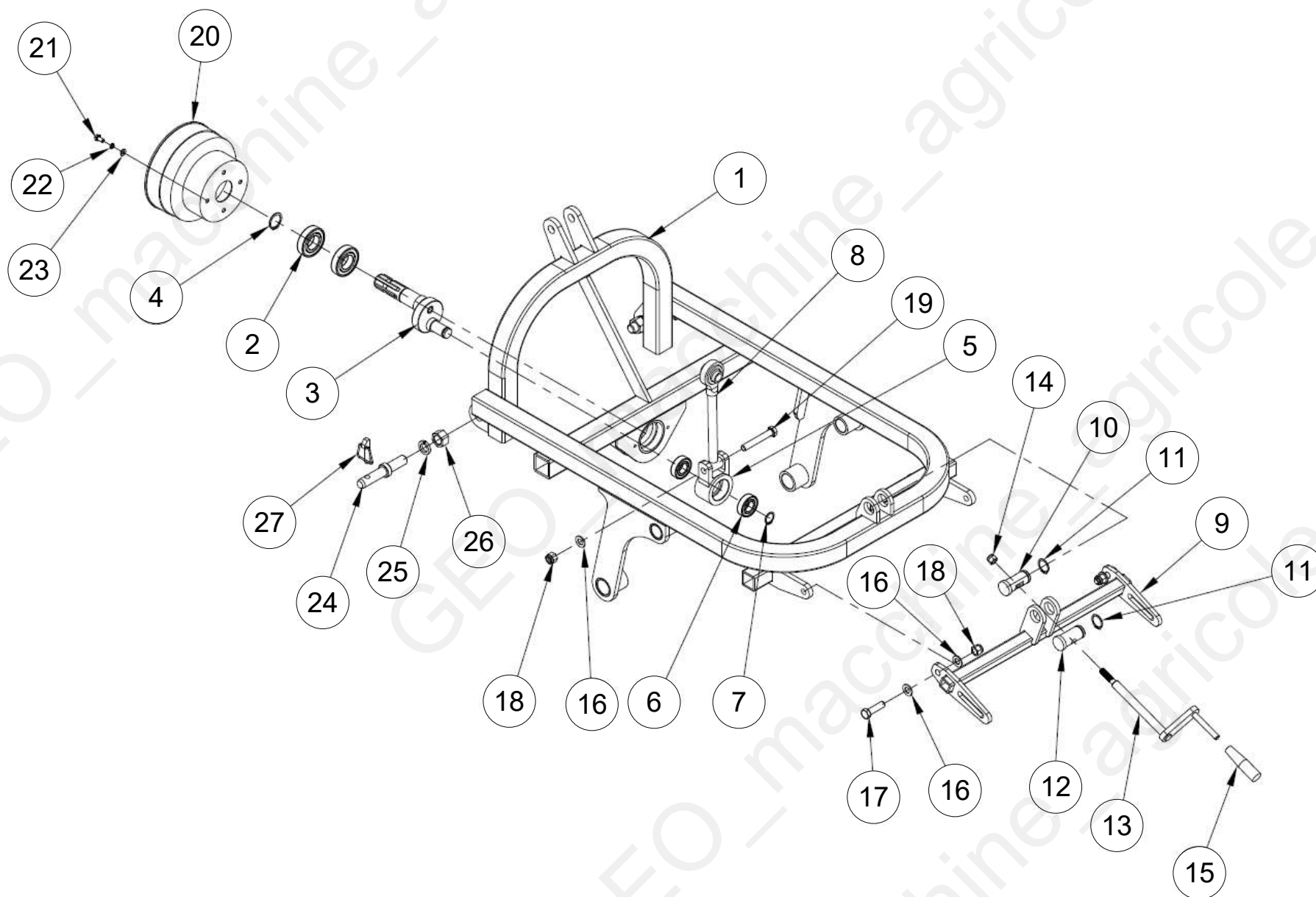


Machine: PM 2014_2017

Assembly: PM_2014-2017_parte 1



Pos	Code	Description	NOTE	Q.
5	GB6170-M12	Nut 12		2
6	GB/T5783-2000-M12×35	BOLT M12x35		2



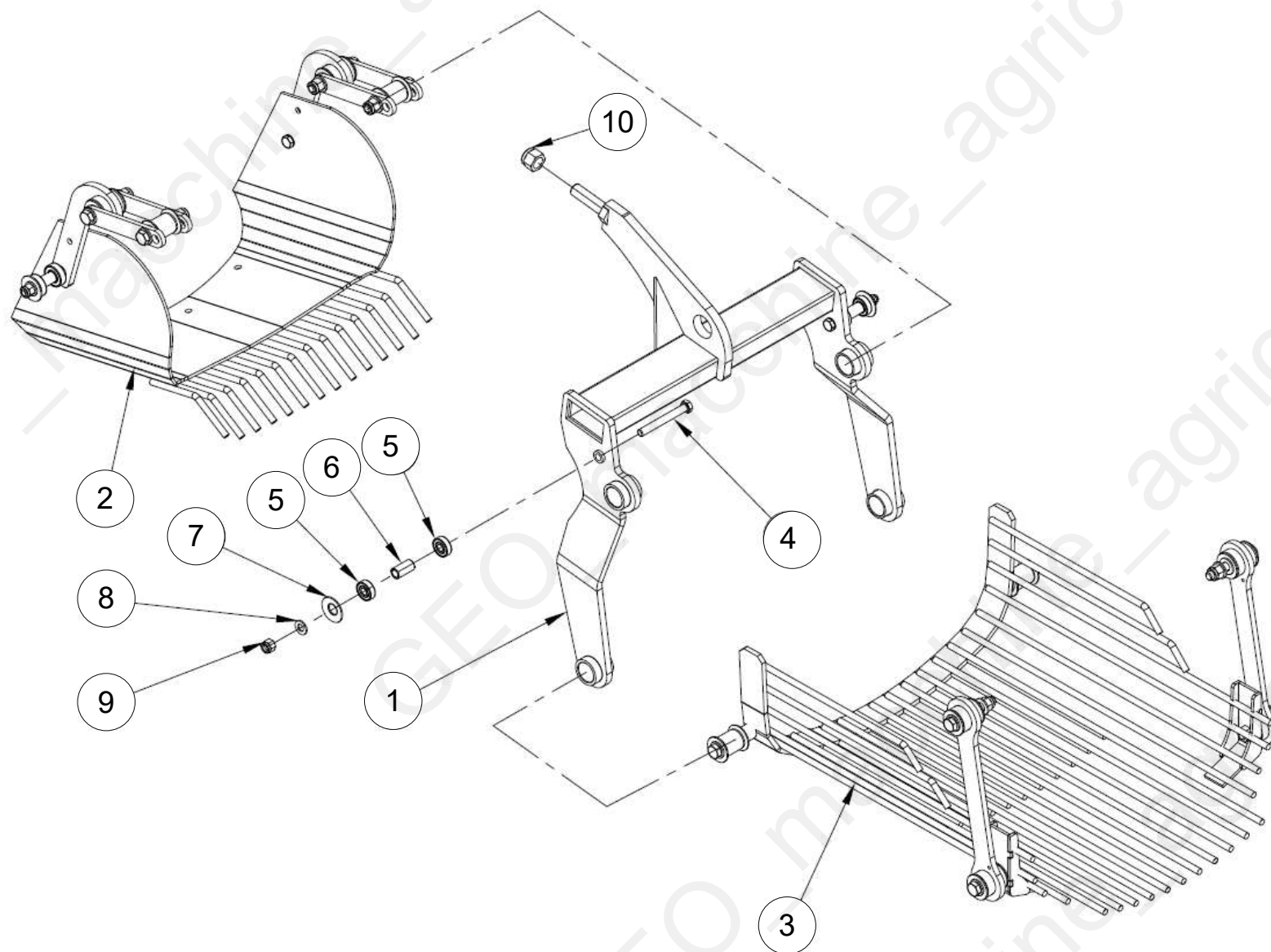
Pos	Code	Description	NOTE	Q.
1	PD50.011	MAIN FRAME-WELDMENT		1
2	GB/T276-6207-2Z	BEARING 6207-2ZR		2
3	PD50.017	CRANK SHAFT		1
4	GB894.2-35	EXTERNAL RETAINER RING 35		1
5	PD50.112	BEARING BLOCK		1
6	GB/T276-6205-2Z	BEARING 6205-2ZR		2
7	GB894.2-25	EXTERNAL RETAINER RING 25		1
8	PD50.015	CONNECTING ROD		1
9	PD50.021	ADJUSTABLE BRACKET-WELDMENT		1
10	PD50.103	HINGE PIN 2		1
11	GB894.2-30	EXTERNAL RETAINER RING 30		2
12	PD50.102	HINGE PIN 1		1
13	PD50.022	ADJUSTMENT LEVER		1
14	GB/T889.1-M12	LOCK NUT M12		1
15	PD50.101	HANDLE COVER		1
16	GB/T97.1-14	Plain washer 14		5
17	GB/T5783-M14x50	BOLT M14x50		2
18	GB/T889.1-M14	LOCK NUT M14		3
19	GB/T5782-M14x90	BOLT M14x90		1
20	FM150.120A	SHIELD-PTO		1
21	GB/T5783-M8x16	BOLT M8x16		2
22	GB/T93-8	Lock washer 8		2
23	GB/T97.1-8x1.6	PLAIN WASHER 8		2
24	FM150.114	HITCH PIN-LOWER		2
25	GB/T93-22	LOCK WASHER 22		2

Machine: PM_2014_2017

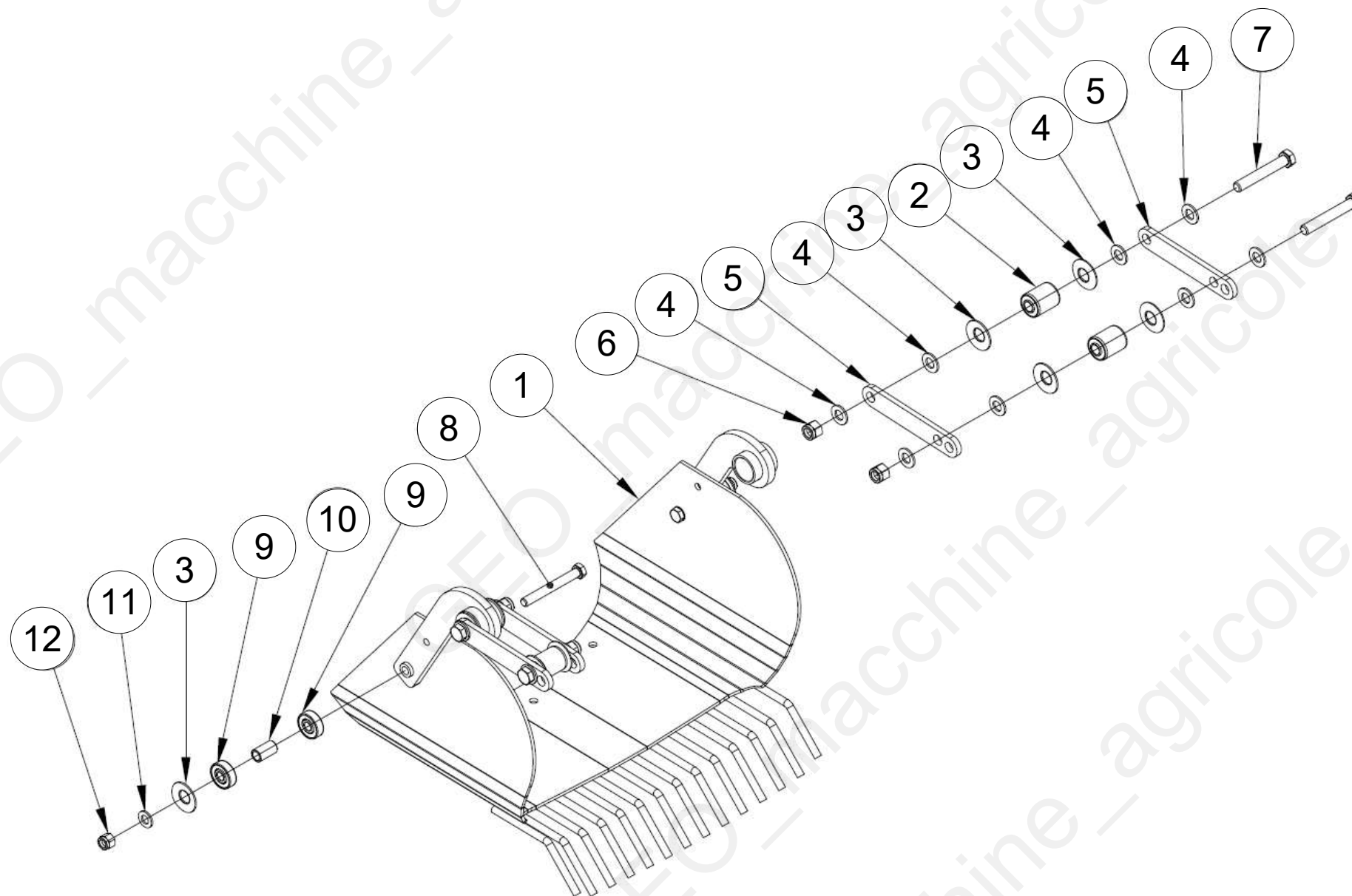
Assembly: PM_2014-2017_parte 2



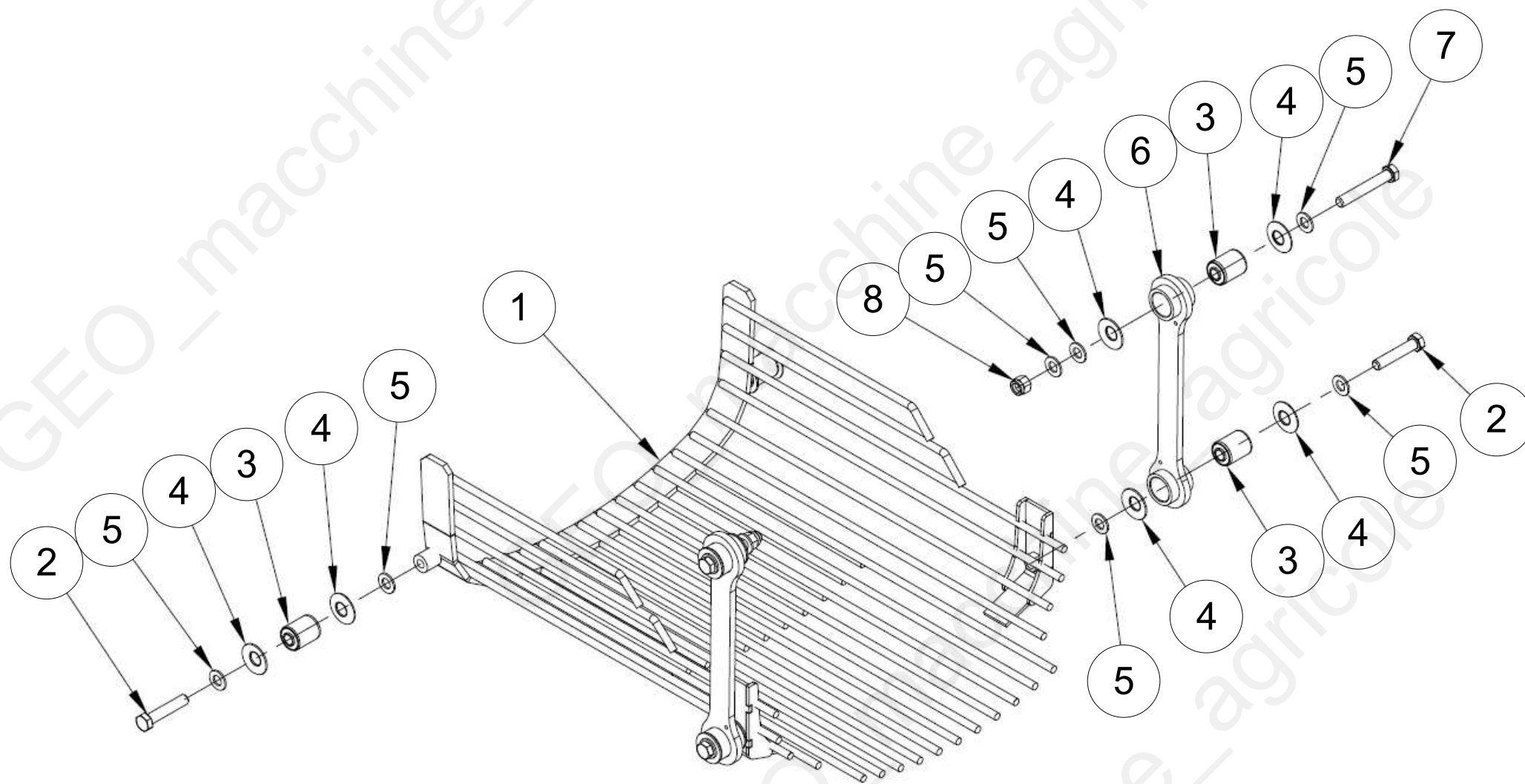
Pos	Code	Description	NOTE	Q.
26	GB/T6171-M22x1.5	NUT M22x1.5		2
27	LP-11x45	LOCK PIN 11x45		2



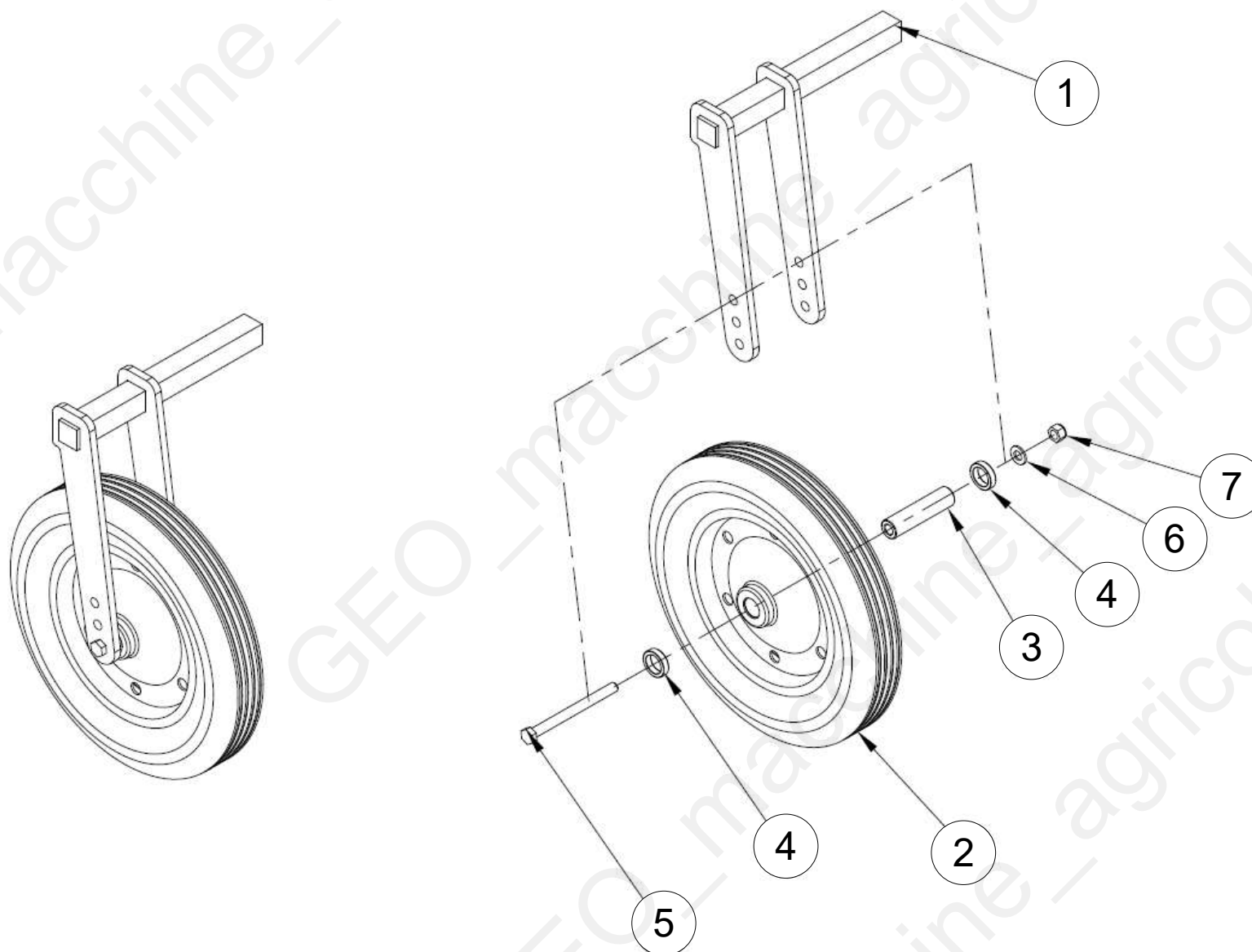
Pos	Code	Description	NOTE	Q.
1	PD50.012	SWING SEAT-WELDMENT		1
4	GB/T5782-M12×100	BOLT M12x100		2
5	GB/T276-6201-2Z	BEARING 6201-2ZR		4
6	PD50.106	SPACER		2
7	PD50.104	SPRING WASHER		2
8	GB/T97.1-12×2.5	PLAIN WASHER 12		2
9	GB/T889.1-M12	LOCK NUT M12		2
10	GB/T889.1-M20	LOCK NUT M20		1



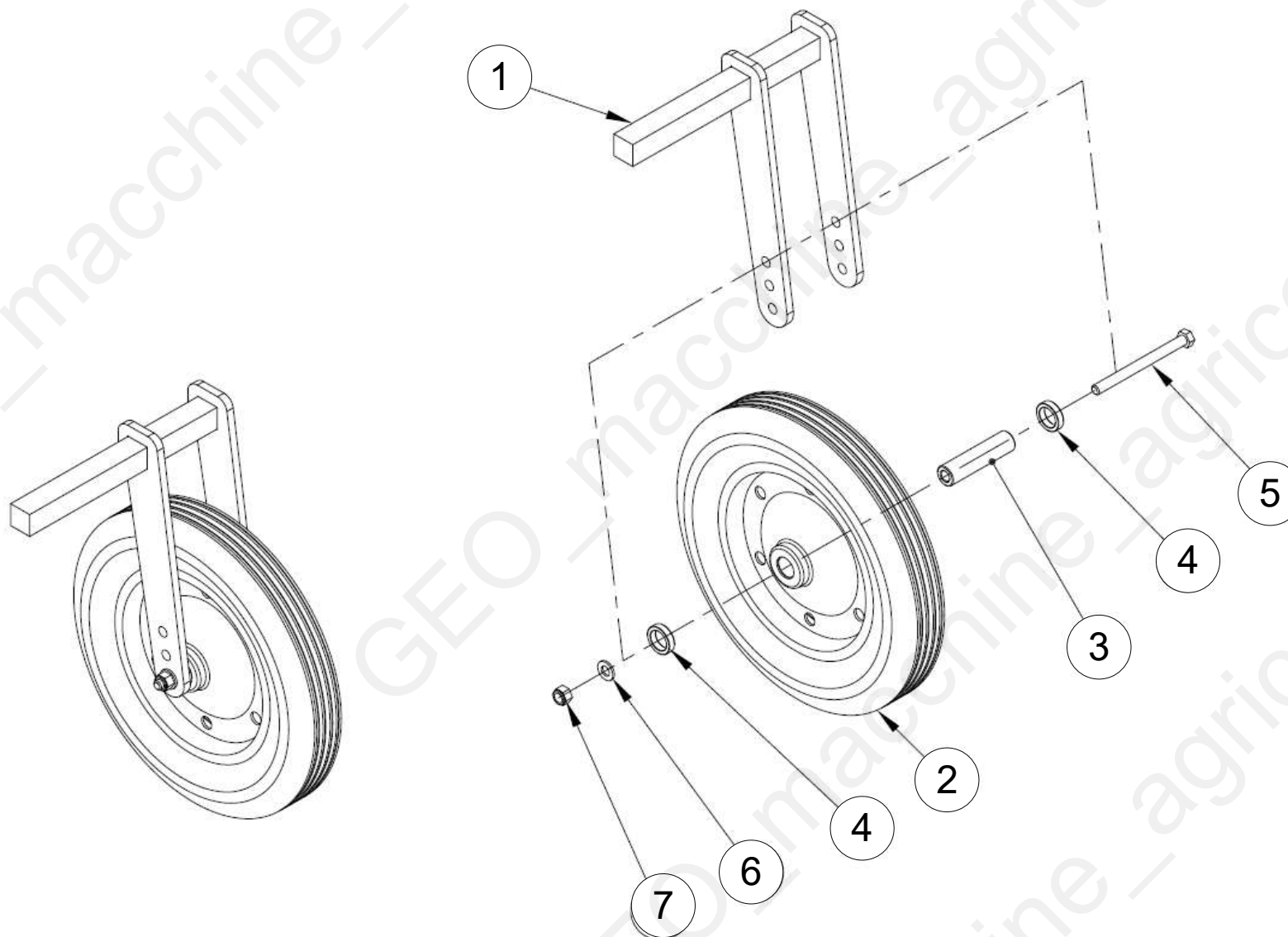
Pos	Code	Description	NOTE	Q.
1	PD50.013	DIGGING BUCKT-WELDMENT		1
2	PD50.031	BUSHING-ASSEMBLY		4
3	PD50.104	SPRING WASHER		10
4	GB/T97.1-14	Plain washer 14		16
5	PD50.111	CONNECTING PLATE		4
6	GB/T889.1-M14	LOCK NUT M14		4
7	GB/T5782-M14×90	BOLT M14x90		4
8	GB/T5782-M12×100	BOLT M12x100		2
9	GB/T276-6301-2Z	BEARING 6301-2ZR		4
10	PD50.105	SPACER BUSH 31		2
11	GB/T97.1-12	Plain washer 12		2
12	GB/T889.1-M12	LOCK NUT M12		2



Pos	Code	Description	NOTE	Q.
1	PD50.014	VIBRATING BUCKET-WELDMENT		1
2	GB/T5782-M14×70	BOLT M14x70		4
3	PD50.031	BUSHING-ASSEMBLY		6
4	PD50.104	SPRING WASHER		12
5	GB/T97.1-14	Plain washer 14		14
6	PD50.020	CONNECTING BAR-WELDMENT		2
7	GB/T5782-M14×90	BOLT M14x90		2
8	GB/T889.1-M14	LOCK NUT M14		2



Pos	Code	Description	NOTE	Q.
1	PD50.018	LEFT-WHEEL FORK-WELDMENT		1
2	T380x76x25	WHEEL-ASSEMBLY		1
3	PD50.110	BUSHING		1
4	PD50.109	SPACER		2
5	GB5782-M12x140	Bolt M12x140		1
6	GB97.1-12	plain washer 12		1
7	GB889.1-M12	Locking nut M12		1



Pos	Code	Description	NOTE	Q.
1	PD50.019	RIGHT-WHEEL FORK-WELDMENT		1
2	T380x76x25	WHEEL-ASSEMBLY		1
3	PD50.110	BUSHING		1
4	PD50.109	SPACER		2
5	GB5782-M12x140	Bolt M12x140		1
6	GB97.1-12	plain washer 12		1
7	GB889.1-M12	Locking nut M12		1