

# Spare Part Book



**SB**



GEO Italy S.R.L.

Latest release: 16/03/2021

Via G. Abbate, 215, 14054 Castagnole delle Lanze AT

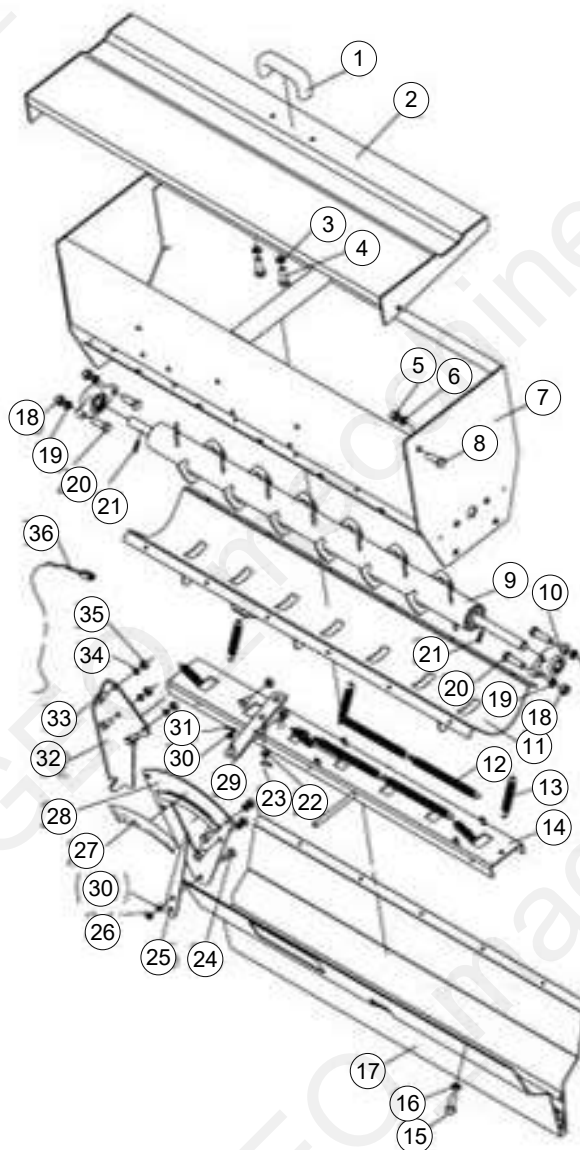
Page 1

# Table of Contents

| Tavola    | Page |
|-----------|------|
| SB Seeder | 3    |
| SB        | 10   |

## SB Seeder





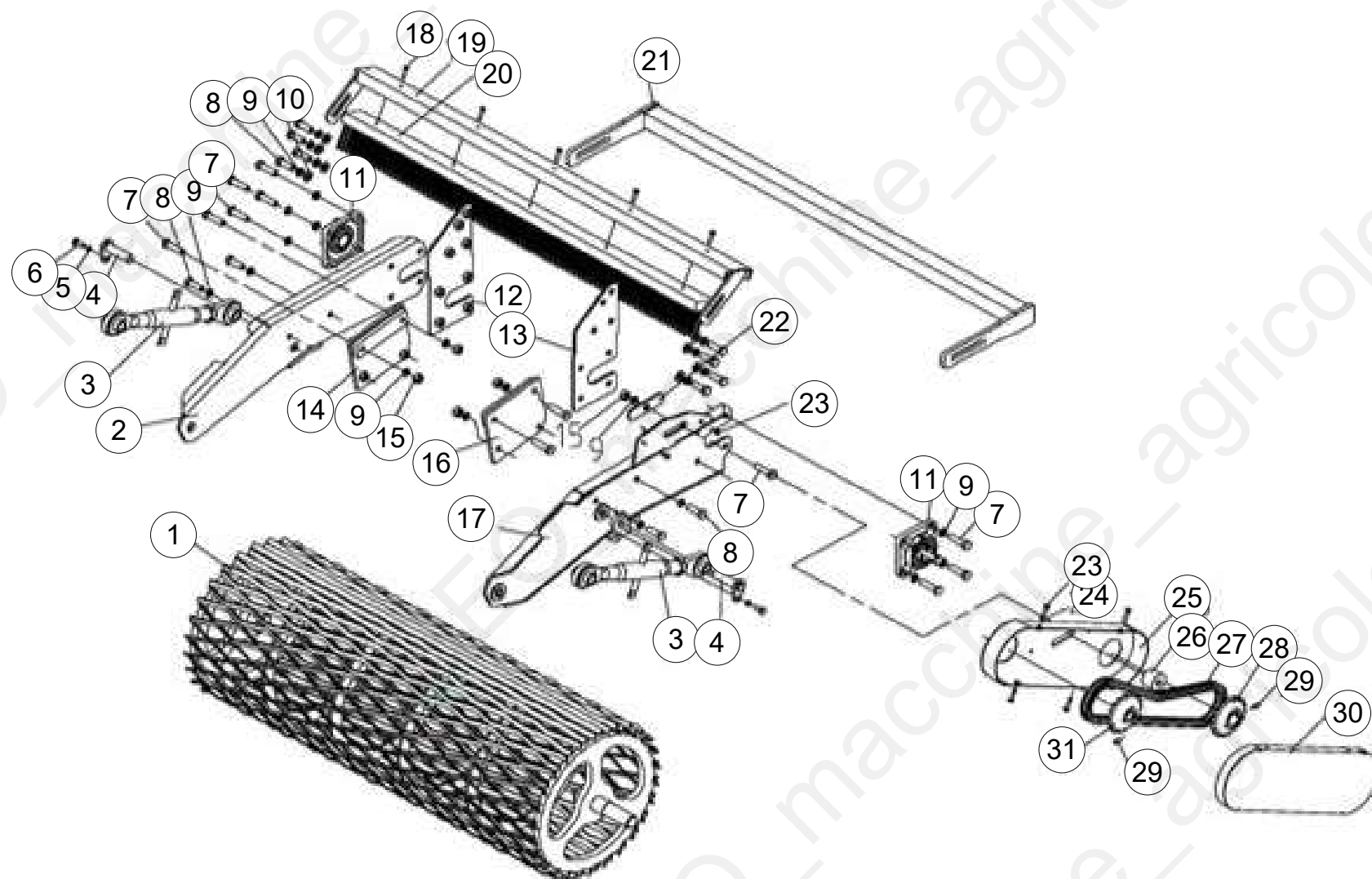
| Pos | Code           | Description             | NOTE | Q. |
|-----|----------------|-------------------------|------|----|
| 1   | RKH120-BS      | handle                  |      | 1  |
| 2   | MZ145B-0901-00 | Upper cap (145)         |      | 1  |
| 2   | MZ165B-0901-00 | Upper cap (165)         |      | 1  |
| 3   | GB93-8         | Spring washer 8         |      | 2  |
| 4   | GB5783-M8X20   | bolt M8X20              |      | 2  |
| 5   | DIN985-M10     | Locking nut M10         |      | 2  |
| 6   | GB97.1-10      | PLAIN WASHER 10         |      | 2  |
| 7   | MZ145B-0902-00 | Hopper (145)            |      | 1  |
| 7   | MZ165B-0902-00 | Hopper (165)            |      | 1  |
| 8   | GB5783-M10X30  | Bolt M10X30             |      | 2  |
| 9   | MZ145B-0903-00 | Stirrer (145)           |      | 1  |
| 9   | MZ165B-0903-00 | Stirrer (165)           |      | 1  |
| 10  | UCFL204-45     | BEARING SEAT UCFL204-45 |      | 2  |
| 11  | MZ145B-0904-00 | Bottom plate(145)       |      | 1  |
| 11  | MZ165B-0904-00 | Bottom plate(165)       |      | 1  |
| 12  | 1BF200-0900-02 | Big tension spring      |      | 4  |
| 13  | 1BF200-0900-01 | Small tension spring    |      | 6  |
| 14  | MZ145B-0905-00 | Slide plate (145)       |      | 1  |
| 14  | MZ165B-0905-00 | Slide plate (165)       |      | 1  |
| 15  | GB5783-M6X14   | Hexagon nut             |      | 22 |
| 16  | GB93-6         | spring washer 6         |      | 22 |
| 17  | MZ145B-0906-00 | Ejection exit (145)     |      | 1  |
| 17  | MZ165B-0906-00 | Ejection exit (165)     |      | 1  |
| 18  | DIN985-M12     | nut M12                 |      | 4  |
| 19  | GB93-12        | spring washer 12        |      | 4  |

Machine: SB Seeder

Assembly: Sb Seeder\_parte 1



| Pos | Code           | Description                             | NOTE | Q. |
|-----|----------------|---|------|----|
| 20  | GB5783-M12X35  | Bolt M12X35                             |      | 4  |
| 21  | GB879.1-5X30   | Elastic cylindrical pin                 |      | 2  |
| 22  | GB97.1-12      | plain washer 12                         |      | 1  |
| 23  | GB91-4X20      | Cotter pin                              |      | 1  |
| 24  | 1ZS-380.48.03  | Bolt M8x20                              |      | 1  |
| 25  | 1BF200-0900-04 | Ejection exit pointer                   |      | 1  |
| 26  | DIN985-M8      | nut M8                                  |      | 1  |
| 27  | 1BF200-0900-05 | Scale sticker                           |      | 1  |
| 28  | 1BF200-0908-00 | Pointer fixed seat                      |      | 1  |
| 29  | 1BF200-0907-00 | Stress application rod                  |      | 1  |
| 30  | GB97.1-8       | Plain washer 8                          |      | 2  |
| 31  | GB91-3.2X20    | cotter pin 3.2x20                       |      | 1  |
| 32  | 1BF200-0900-03 | Stress application rod supporting plate |      | 1  |
| 33  | GB5783-M10X20  | Bolt M10x20                             |      | 7  |
| 34  | GB93-10        | spring washer 10                        |      | 7  |
| 35  | GB6170-M10     | Nut 10                                  |      | 7  |
| 36  | 1BF200-1300-00 | Manual control                          |      | 1  |





| Pos | Code           | Description                | NOTE | Q. |
|-----|----------------|----------------------------|------|----|
| 1   | MZ145B-1001-00 | Roller (145)               |      | 1  |
| 1   | MZ165B-1001-00 | Roller (165)               |      | 1  |
| 2   | MZ105B.016     | Right side pull frame      |      | 1  |
| 3   | MZ105.024      | Adjusting rod              |      | 2  |
| 4   | MZ105B.011     | Pin                        |      | 2  |
| 5   | GB93-8         | Spring washer 8            |      | 2  |
| 6   | GB5783-M8x20   | bolt M8X20                 |      | 2  |
| 7   | GB5782-M12X45  | Bolt M12x45                |      | 8  |
| 8   | GB5783-M12X35  | Bolt M12X35                |      | 12 |
| 9   | GB93-12        | spring washer 12           |      | 20 |
| 10  | GB97.1-12      | plain washer 12            |      | 8  |
| 11  | UCF206         | UCF206 bearing             |      | 2  |
| 12  | 1BF200-1007-00 | Roller connect plate left  |      | 1  |
| 13  | 1BF200-1006-00 | Roller connect plate right |      | 1  |
| 14  | 1BF200-1005-00 | Hopper connect frame       |      | 1  |
| 15  | GB6170-M12     | Nut 12                     |      | 5  |
| 16  | 1BF200-1004-00 | Hopper connect frame       |      | 1  |
| 17  | MZ105B.015     | left side pull frame       |      | 1  |
| 18  | GB5783-M6X25   | bolt M6X25                 |      | 5  |
| 19  | MZ145B-1009-00 | Brush frame (145)          |      | 1  |
| 19  | MZ165B-1009-00 | Brush frame (165)          |      | 1  |
| 20  | MZ145B-1000-01 | Wood brush assembly(145)   |      | 1  |
| 20  | MZ165B-1000-01 | Wood brush assembly(165)   |      | 1  |
| 21  | MZ145B-1008-00 | Fender bracket(145)        |      | 1  |
| 21  | MZ165B-1008-00 | Fender bracket(165)        |      | 1  |



Machine: SB Seeder

Assembly: Sb Seeder\_parte 2

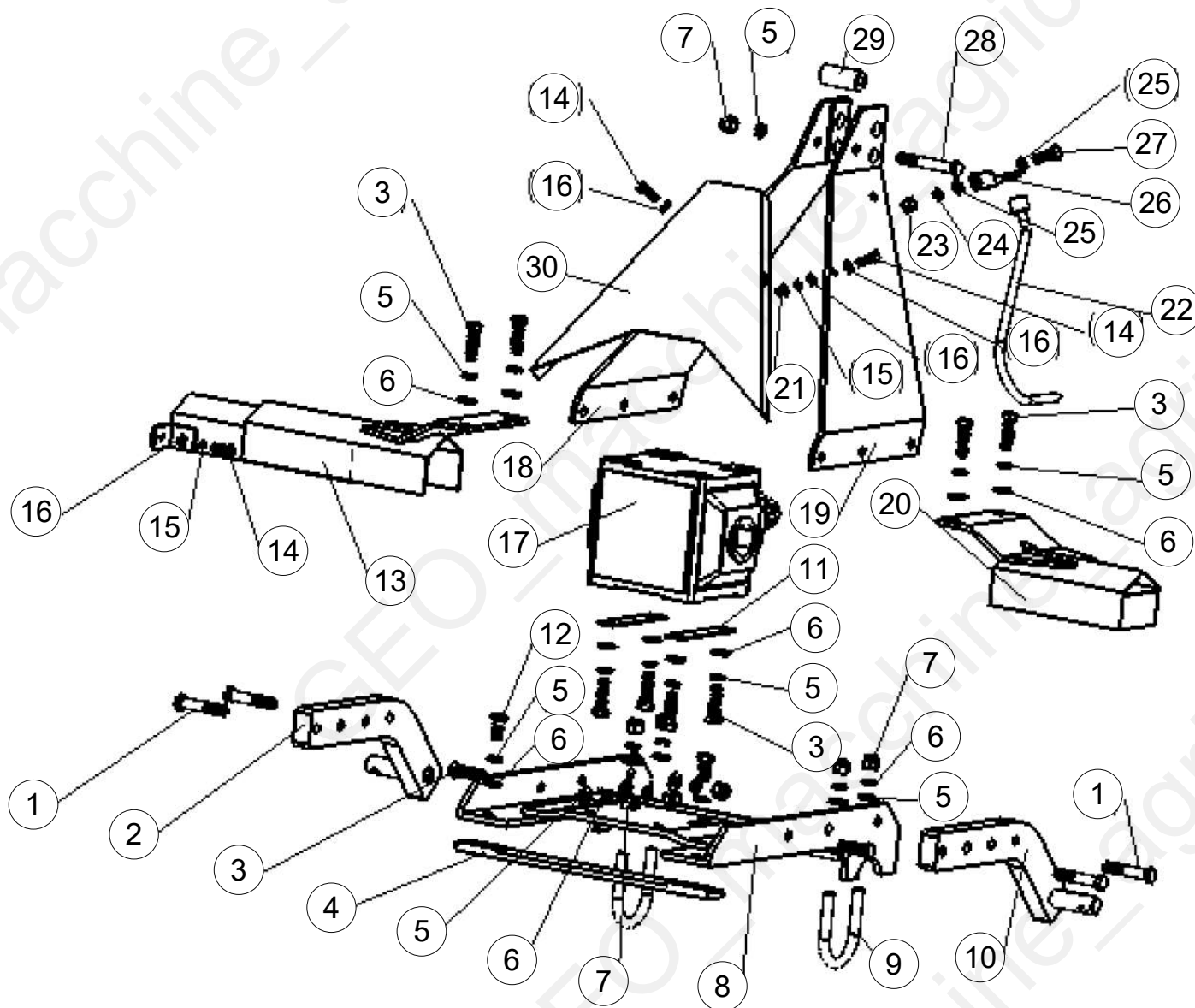


| Pos | Code           | Description      | NOTE | Q. |
|-----|----------------|------------------|------|----|
| 22  | 1BF200-0000-04 | Interior plate   |      | 1  |
| 23  | GB5783-M6X16   | bolt M6X16       |      | 6  |
| 24  | GB93-6         | spring washer 6  |      | 6  |
| 25  | 1BF200-1100-00 | Sprocket cover 1 |      | 1  |
| 26  | 1BF200-0000-03 | Nylon sleeve     |      | 1  |
| 27  | 10A-1-62       | chain            |      | 1  |
| 28  | 1BF200-0000-01 | Sprocket 1       |      | 1  |
| 29  | GB77-M8X14     | Set screw        |      | 2  |
| 30  | 1BF200-1200-00 | Sprocket cover 2 |      | 1  |
| 31  | 1BF200-0000-02 | Sprocket 2       |      | 1  |

## SB



GEO Italy S.R.L.



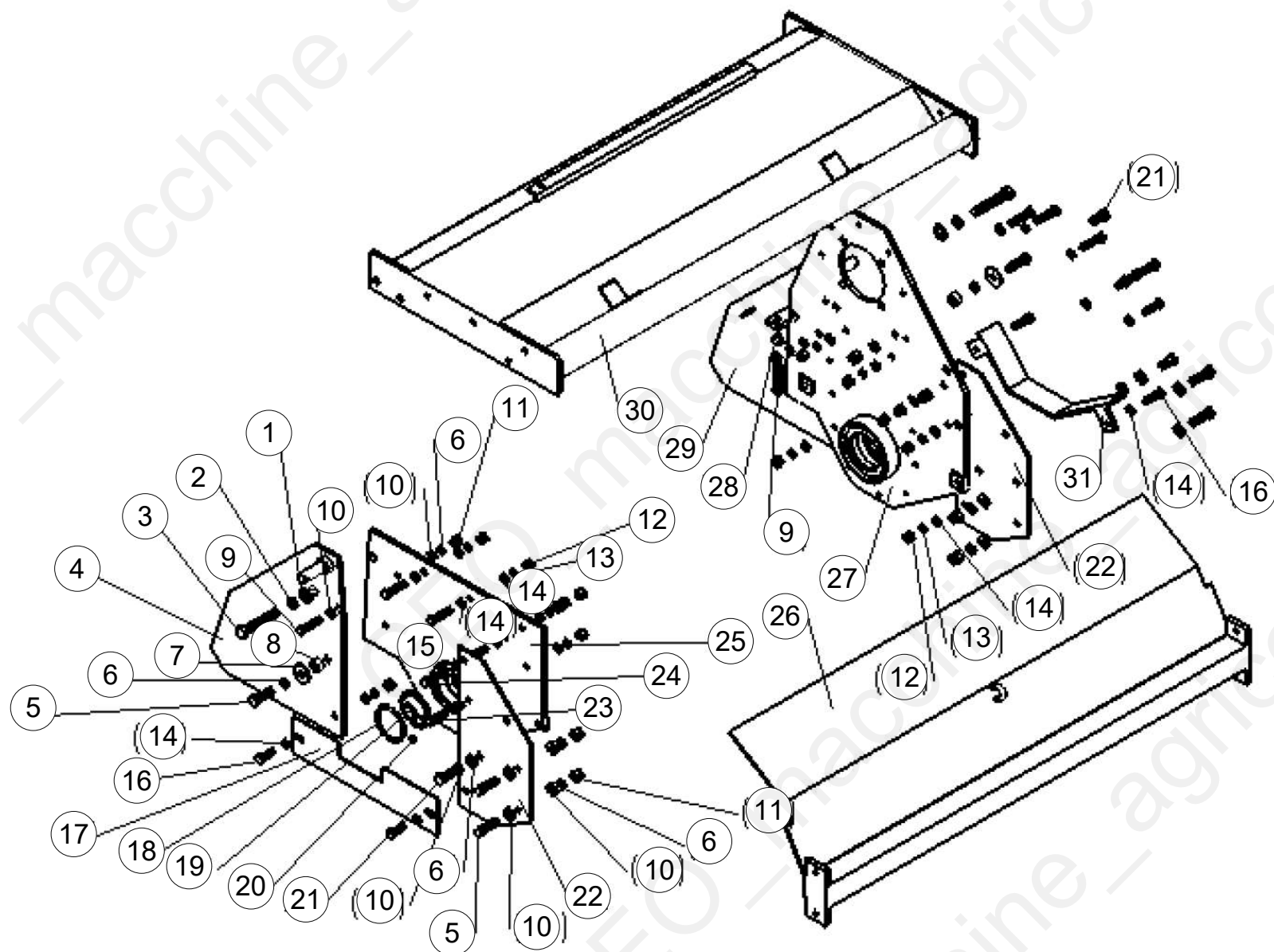
| Pos | Code             | Description                   | NOTE | Q. |
|-----|------------------|-------------------------------|------|----|
| 1   | GB5782-86/M12x65 | Bolt M12x65                   |      | 4  |
| 2   | MZ105.030        | Hanging arm weldement (L)     |      | 1  |
| 3   | GB5783-86/M12x40 | Bolt M12x40                   |      | 2  |
| 4   | MZ105.107        | Connecting plate              |      | 1  |
| 5   | GB97.1-85/12     | Plain washer 12               |      | 18 |
| 6   | GB93-87-12       | Spring lock washer 12         |      | 19 |
| 7   | GB889-86-M12     | Locking nut M12               |      | 11 |
| 8   | MZ105.031        | Frame for gear box            |      | 1  |
| 9   | MZ105.103        | U shape bolt                  |      | 2  |
| 10  | MZ105.032        | Hanging arm weldement (R)     |      | 1  |
| 11  | MZ105.129        | Adjusting plate               |      | 2  |
| 12  | GB5783-86/M12x35 | Bolt M12x35                   |      | 2  |
| 13  | MZ105.018        | Flex pipe combination         |      | 1  |
| 14  | GB5783-86/M8x25  | Bolt M8x25                    |      | 2  |
| 15  | GB93-87-8        | Spring lock washer 8          |      | 4  |
| 16  | GB97.1-85/8      | Plain washer 8                |      | 6  |
| 17  | XH-27J.875       | Gearbox                       |      | 1  |
| 18  | MZ105.036        | Suspension plate weldment (L) |      | 1  |
| 19  | MZ105.035        | Suspension plate weldment (R) |      | 1  |
| 20  | MZ105.016        | En sleeve weldment            |      | 1  |
| 21  | GB889-86-M8      | Locking nut M8                |      | 2  |
| 22  | MZ105.037        | Hook                          |      | 1  |
| 23  | GB889-86-M10     | Locking nut M10               |      | 1  |
| 24  | GB93-87-10       | Spring lock washer 10         |      | 1  |
| 25  | GB97.1-85        | Plain washer                  |      | 2  |

Machine: SB

Assembly: SB\_parte 1



| Pos | Code             | Description        | NOTE | Q. |
|-----|------------------|--------------------|------|----|
| 26  | MZ105.131        | Supporter for hook |      | 1  |
| 27  | GB5783-86/M10x30 | Bolt M10X30        |      | 1  |
| 28  | GB5782-86/M12x85 | Bolt M12x85        |      | 1  |
| 29  | MZ105.130        | Sleeve Spacer      |      | 1  |
| 30  | MZ105.101        | Cover board        |      | 1  |



Machine: SB

Assembly: SB\_parte 2



| Pos | Code             | Description            | NOTE | Q. |
|-----|------------------|------------------------|------|----|
| 1   | GB97.1-85/14     | Plain washer 14        |      | 2  |
| 2   | GB93-87-14       | Spring lock washer 14  |      | 2  |
| 3   | GB5783-86/M14x80 | Bolt M14x80            |      | 2  |
| 4   | MZ105.014        | Rear cover (L)         |      | 1  |
| 5   | GB5783-86/M14x80 | Bolt M14x80            |      | 6  |
| 6   | GB93-87-14       | Spring lock washer 14  |      | 11 |
| 7   | GB96-85-14       | Plait washer 14        |      | 2  |
| 8   | MZ105.106        | Sleeve                 |      | 2  |
| 9   | GB5783-86/M12x50 | Bolt M12x50            |      | 2  |
| 10  | GB97.1-85/12     | Plain washer 12        |      | 14 |
| 11  | GB889-86-M12     | Locking nut M12        |      | 7  |
| 12  | GB889-86-M10     | Locking nut M10        |      | 14 |
| 13  | GB93-87-10       | Spring lock washer 10  |      | 14 |
| 14  | GB97.1-85/10     | Plain washer 10        |      | 28 |
| 15  | GB5783-86/M10x40 | Bolt M10X40            |      | 6  |
| 16  | GB5783-86/M10x30 | Bolt M10X30            |      | 4  |
| 17  | MZ105.105        | Lower connecting       |      | 1  |
| 18  | GB983.1-86       | Retaining ring 72      |      | 1  |
| 19  | MZ105.116        | Dustproof cover        |      | 1  |
| 20  | GB1152-89/M6     | Grease nipple M6       |      | 1  |
| 21  | GB5783-86/M14x80 | Bolt M14x80            |      | 3  |
| 22  | MZ105.104        | Front connectong plate |      | 2  |
| 23  | GB5783-86/M14x80 | Bolt M14x80            |      | 2  |
| 24  | GB5783-86/M14x80 | Bolt M14x80            |      | 2  |
| 25  | MZ105.021        | Bracket weldment (L)   |      | 1  |

GEO Italy S.R.L.

Via G. Abbate, 215, 14054 Castagnole delle Lanze AT

Page 15

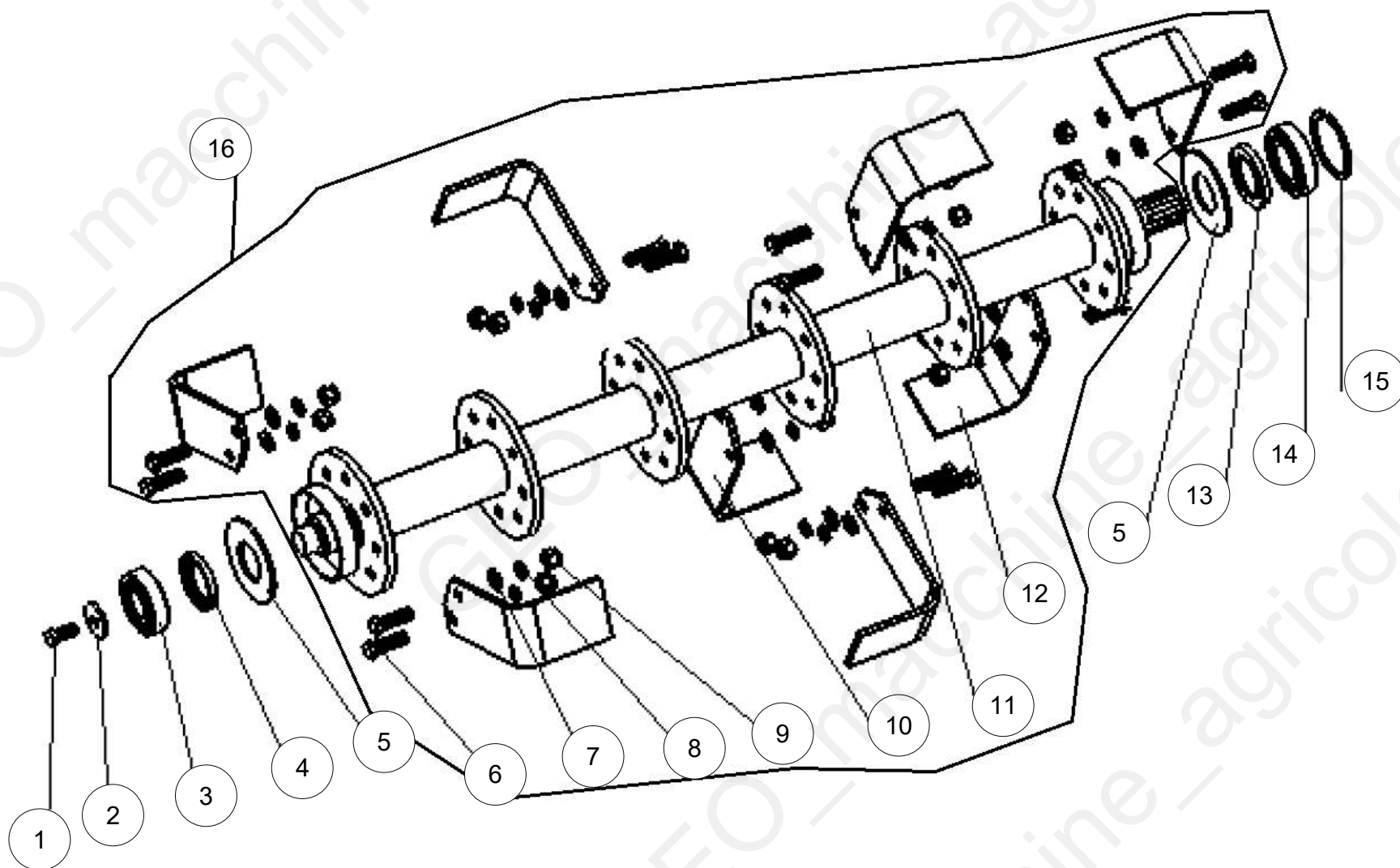


Machine: SB

Assembly: SB\_parte 2



| Pos | Code      | Description              | NOTE | Q. |
|-----|-----------|--------------------------|------|----|
| 26  | MZ105.011 | Inner cover weldment 105 |      | 1  |
| 26  | MZ125.011 | Inner cover weldment 125 |      | 1  |
| 26  | MZ145.011 | Inner cover weldment 145 |      | 1  |
| 26  | MZ165.011 | Inner cover weldment 165 |      | 1  |
| 27  | MZ105.033 | Bracket weldment (R)     |      | 1  |
| 28  | GB170-86  | Nut6 M12                 |      | 2  |
| 29  | MZ105.013 | Rear cover (R)           |      | 2  |
| 30  | MZ105.029 | Cover board weldment 105 |      | 1  |
| 30  | MZ125.029 | Cover board weldment 125 |      | 1  |
| 30  | MZ145.029 | Cover board weldment 145 |      | 1  |
| 30  | MZ165.029 | Cover board weldment 165 |      | 1  |
| 31  | MZ105.012 | Guard weldment           |      | 1  |

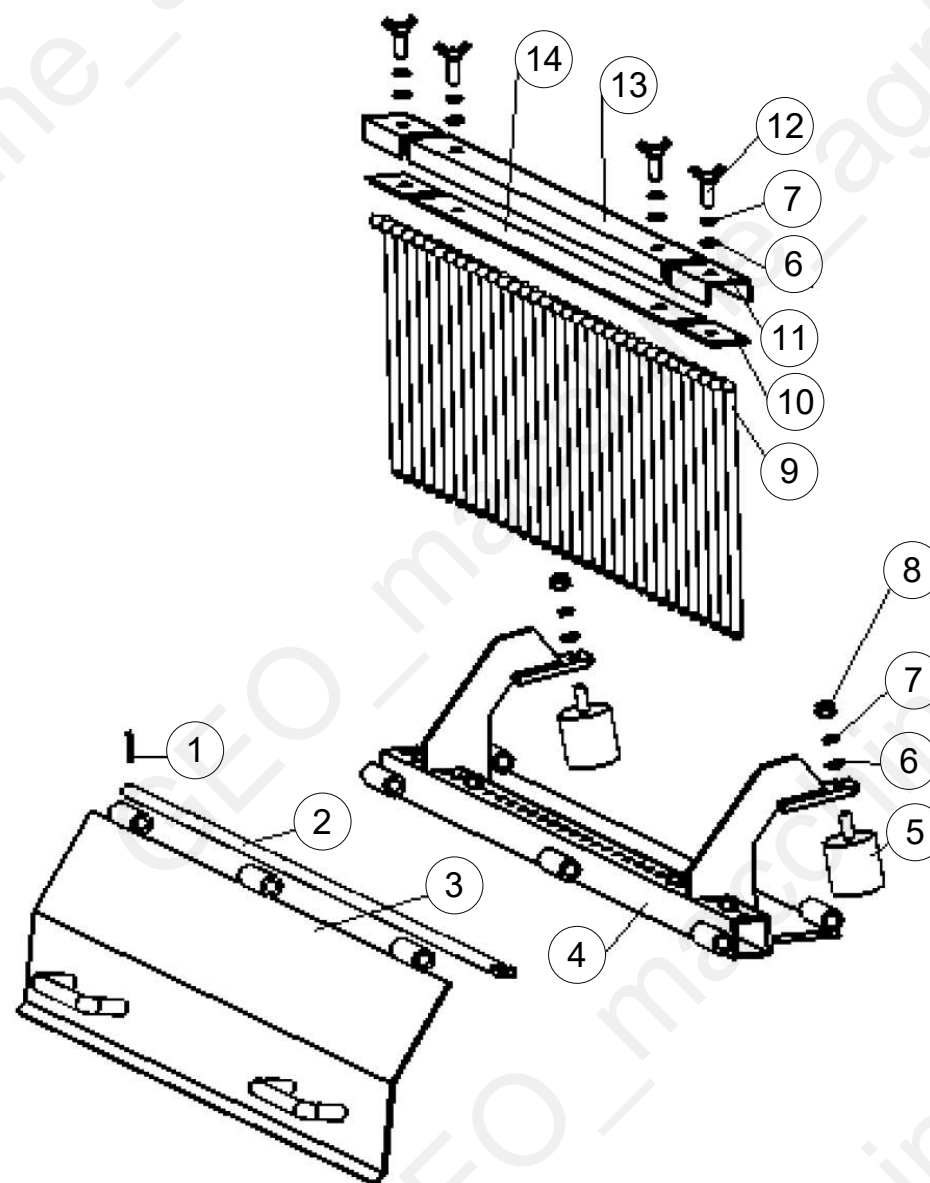


Machine: SB

Assembly: SB\_parte 3



| Pos | Code               | Description                          | NOTE | Q. |
|-----|--------------------|--------------------------------------|------|----|
| 1   | GB5783-86/M12x25   | Bolt M12×25                          |      | 1  |
| 2   | MZ105.115          | Retaining Lock washer                |      | 1  |
| 3   | GB276-94-6306      | Bearing 6306                         |      | 1  |
| 4   | GB13871-92-45x65x8 | Oil seal FB45x65x8                   |      | 1  |
| 5   | MZ105.118          | Sealed felt ring                     |      | 2  |
| 6   | GB5783-86/M12x40   | Bolt M12x40                          |      | 40 |
| 7   | GB97.1-85/12       | Plain washer 12                      |      | 40 |
| 8   | GB93-87-12         | Spring lock washer 12                |      | 40 |
| 9   | GB889-86-M12       | Locking nut M12                      |      | 40 |
| 10  | MZ105.119          | Right bend blade                     |      | 10 |
| 11  | MZ105.028          | Blade shaft weldment 105             |      | 1  |
| 11  | MZ125.028          | Blade shaft weldment 125             |      | 1  |
| 11  | MZ145.028          | Blade shaft weldment 145             |      | 1  |
| 11  | MZ165.028          | Blade shaft weldment 165             |      | 1  |
| 12  | MZ105.120          | Left bend blade                      |      | 10 |
| 13  | GB13871-92-50x72x8 | Oil seal FB50x72x8                   |      | 1  |
| 14  | GB276-94-6209      | Bearing 6209                         |      | 1  |
| 15  | GB893.1-86/85      | Circlip 85                           |      | 1  |
| 16  | MZ105.028.001      | Blade shaft weldment 105 with Blades |      | 1  |
| 16  | MZ125.028.001      | Blade shaft weldment 125 with Blades |      | 1  |
| 16  | MZ145.028.001      | Blade shaft weldment 145 with Blades |      | 1  |
| 16  | MZ165.028.001      | Blade shaft weldment 165 with Blades |      | 1  |



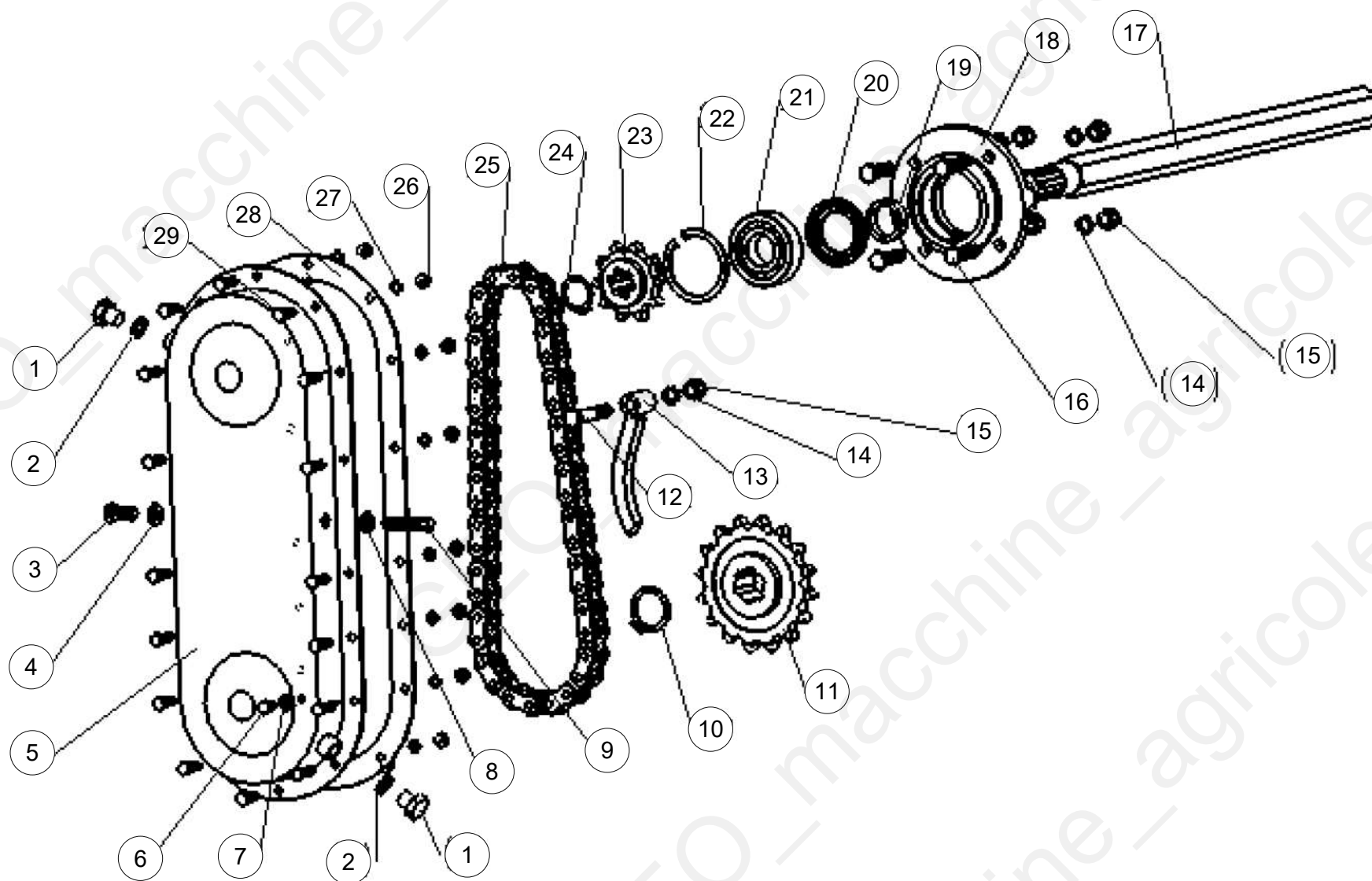
| Pos | Code           | Description                    | NOTE | Q. |
|-----|----------------|--------------------------------|------|----|
| 1   | GB91-86-2.5x20 | Split pin 2.5x20               |      | 1  |
| 2   | MZ105.110      | Rod for hanging rear cover 105 |      | 1  |
| 2   | MZ125.110      | Rod for hanging rear cove 125  |      | 1  |
| 2   | MZ145-110      | Rod for hanging rear cove 145  |      | 1  |
| 2   | MZ165-110      | Rod for hanging rear cove 165  |      | 1  |
| 3   | MZ105.025      | Rear cover 105                 |      | 1  |
| 3   | MZ125.025      | Rear cover 125                 |      | 1  |
| 3   | MZ145.025      | Rear cover 145                 |      | 1  |
| 3   | MZ165.025      | Rear cover 165                 |      | 1  |
| 4   | MZ105.026      | Fram for tooth 105             |      | 1  |
| 4   | MZ125.026      | Fram for tooth 125             |      | 1  |
| 4   | MZ145.026      | Fram for tooth 145             |      | 1  |
| 4   | MZ165.026      | Fram for tooth 165             |      | 1  |
| 5   | MZ105.019      | Shock absorption block         |      | 2  |
| 6   | GB97.1-85/10   | Plain washer 10                |      | 6  |
| 7   | GB93-87-10     | Spring lock washer 10          |      | 6  |
| 8   | GB889-86-M10   | Locking nut M10                |      | 2  |
| 9   | MZ105.117      | Tooth 105                      |      | 0  |
| 10  | MZ105.112      | Short rubber pad               |      | 2  |
| 11  | MZ105.118_1    | Presse plate (short)           |      | 1  |
| 12  | MZ105.107_1    | Bolt with gripe                |      | 4  |
| 13  | MZ105.109      | Presse plate (long) 105        |      | 1  |
| 13  | MZ125.109      | Presse plate (long) 125        |      | 1  |
| 13  | MZ145.109      | Presse plate (long) 145        |      | 1  |
| 13  | MZ165.109      | Presse plate (long) 165        |      | 1  |

Machine: SB

Assembly: SB\_parte 4



| Pos | Code      | Description         | NOTE | Q. |
|-----|-----------|---------------------|------|----|
| 14  | MZ105.111 | Long rubber pad 105 |      | 1  |
| 14  | MZ125.111 | Long rubber pad 125 |      | 1  |
| 14  | MZ145.111 | Long rubber pad 145 |      | 1  |
| 14  | MZ165.111 | Long rubber pad 165 |      | 1  |





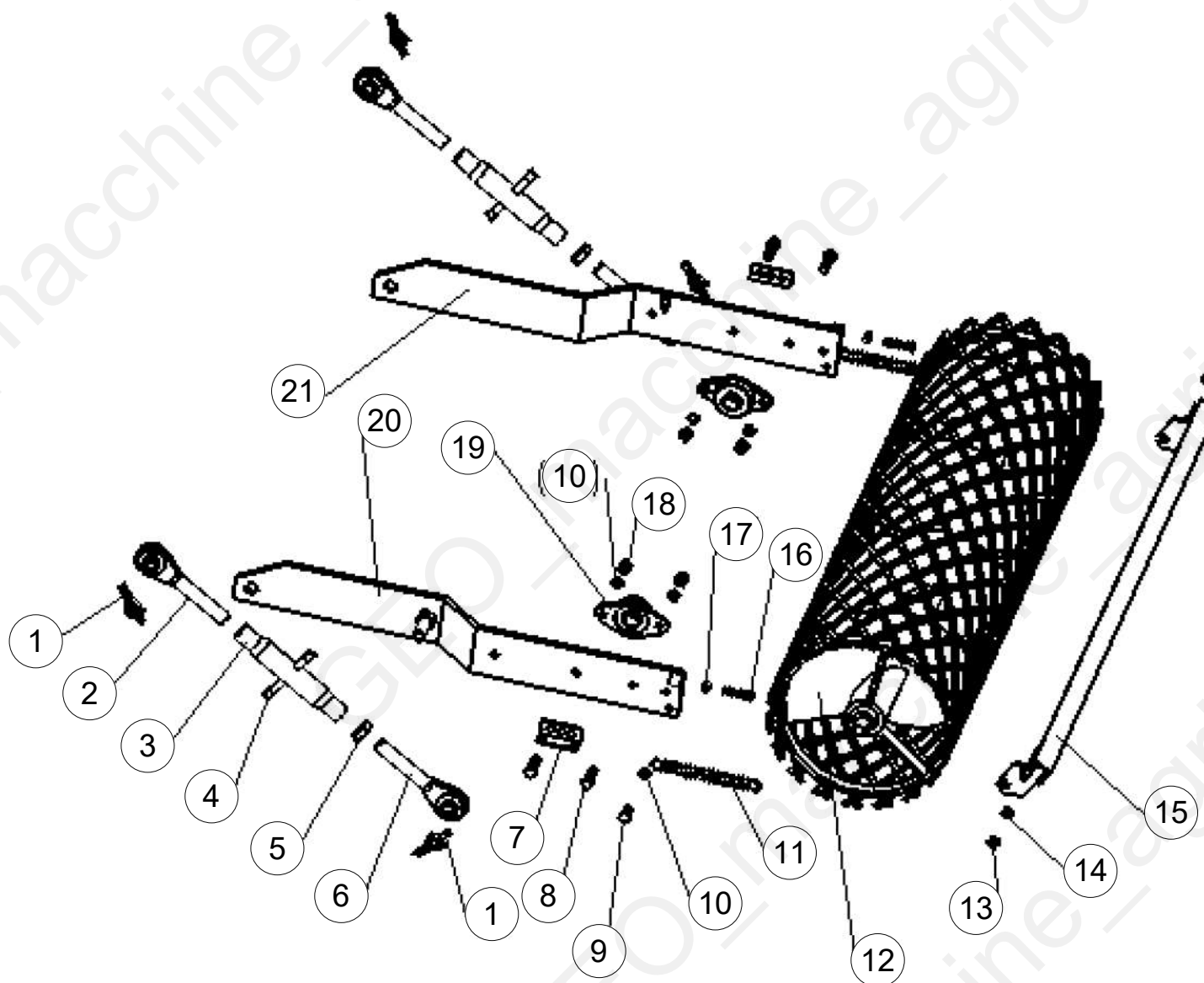
| Pos | Code                | Description            | NOTE | Q. |
|-----|---------------------|------------------------|------|----|
| 1   | GB5786-86/M16X1.5X8 | Bolt M16x1.5x8         |      | 2  |
| 2   | 12.37.149           | Assembled seal ring    |      | 2  |
| 3   | GB5783-86/M12x35    | Bolt M12x35            |      | 1  |
| 4   | GB97.1-85/12        | Plain washer 12        |      | 1  |
| 5   | MZ105.034           | Chian guard weldment   |      | 1  |
| 6   | GB5783-86/M10x20    | Bolt M10x20            |      | 1  |
| 7   | 12.37.219           | Washer                 |      | 1  |
| 8   | GB6172-86/M12       | Nut M12                |      | 1  |
| 9   | GB85-88             | Looking nut M12x50     |      | 1  |
| 10  | GB894.1-86-42       | Retaining ring 42      |      | 1  |
| 11  | MZ105.122           | Driven chain whell     |      | 1  |
| 12  | GB5782-86/M12x65    | Bolt M12x65            |      | 1  |
| 13  | MZ105.027           | Tension plate          |      | 1  |
| 14  | GB93-87-12          | Spring lock washer 12  |      | 5  |
| 15  | GB889-86-M12        | Locking nut M12        |      | 5  |
| 16  | GB5783-86/M12x40    | Bolt M12x40            |      | 4  |
| 17  | MZ105.69.38         | Transmission shaft 105 |      | 1  |
| 17  | MZ125.79.38         | Transmission shaft 125 |      | 1  |
| 17  | MZ145.89.38         | Transmission shaft 145 |      | 1  |
| 17  | MZ165.99.38         | Transmission shaft 165 |      | 1  |
| 18  | MZ105.128           | Bearing seat           |      | 1  |
| 19  | MZ105.124           | Oil seal packet        |      | 1  |
| 20  | GB13871-92-45x72x8  | Oil seal FB45x72x8     |      | 1  |
| 21  | GB276-94-6307       | Bearing 6307           |      | 1  |
| 22  | GB893.186           | Retaining ring 80      |      | 1  |

Machine: SB

Assembly: SB\_parte 5



| Pos | Code            | Description          | NOTE | Q. |
|-----|-----------------|----------------------|------|----|
| 23  | MZ105.127       | Driving chain wheel  |      | 1  |
| 24  | GB894.1-86-32   | Retaining ring 32    |      | 1  |
| 25  | GB1243.1-83     | Chain ISO-16A-1X42   |      | 1  |
| 26  | GB889-86-M8     | Locking nut M8       |      | 16 |
| 27  | GB93-87-8       | Spring lock washer 8 |      | 16 |
| 28  | MZ105.121       | Paper Seal           |      | 1  |
| 29  | GB5783-86/M8x25 | Bolt M8x25           |      | 16 |



Machine: SB

Assembly: SB\_parte 6



| Pos | Code             | Description           | NOTE | Q. |
|-----|------------------|-----------------------|------|----|
| 1   | 200.56.011       | Lock pin              |      | 4  |
| 2   | MZ105.039        | Joint weldment (L)    |      | 2  |
| 3   | MZ105.169        | Screw tube            |      | 2  |
| 4   | MZ105.170        | Turn buckle           |      | 2  |
| 5   | GB6172-86/M22    | Nut M22               |      | 2  |
| 6   | MZ105.040        | Joint weldment (R)    |      | 2  |
| 7   | MZ105.113        | Bracket for sprint    |      | 2  |
| 8   | GB5783-86/M12x45 | Bolt M12X45           |      | 4  |
| 9   | GB5783-86/M12x45 | Bolt M12X45           |      | 2  |
| 10  | GB93-87-12       | Spring lock washer 12 |      | 6  |
| 11  | MZ105.114        | Pulling spring        |      | 2  |
| 12  | MZ105.023        | Roller weldment 105   |      | 1  |
| 12  | MZ125.023        | Roller weldment 125   |      | 1  |
| 12  | MZ145.023        | Roller weldment 145   |      | 1  |
| 12  | MZ165.023        | Roller weldment 165   |      | 1  |
| 13  | GB889-86-M10     | Locking nut M10       |      | 2  |
| 14  | GB97.1-85/10     | Plain washer 10       |      | 2  |
| 15  | MZ105.022        | Frame 105             |      | 1  |
| 15  | MZ125.022        | Frame 125             |      | 1  |
| 15  | MZ145.022        | Frame 145             |      | 1  |
| 15  | MZ165.022        | Frame 165             |      | 1  |
| 16  | GB5783-86/M12x45 | Bolt M12X45           |      | 2  |
| 17  | GB6170-86-M10    | Nut M10               |      | 2  |
| 18  | GB889-86-M12     | Locking nut M12       |      | 4  |
| 19  | GB7810-87-90205  | Bearing 90205         |      | 2  |

GEO Italy S.R.L.

Via G. Abbate, 215, 14054 Castagnole delle Lanze AT

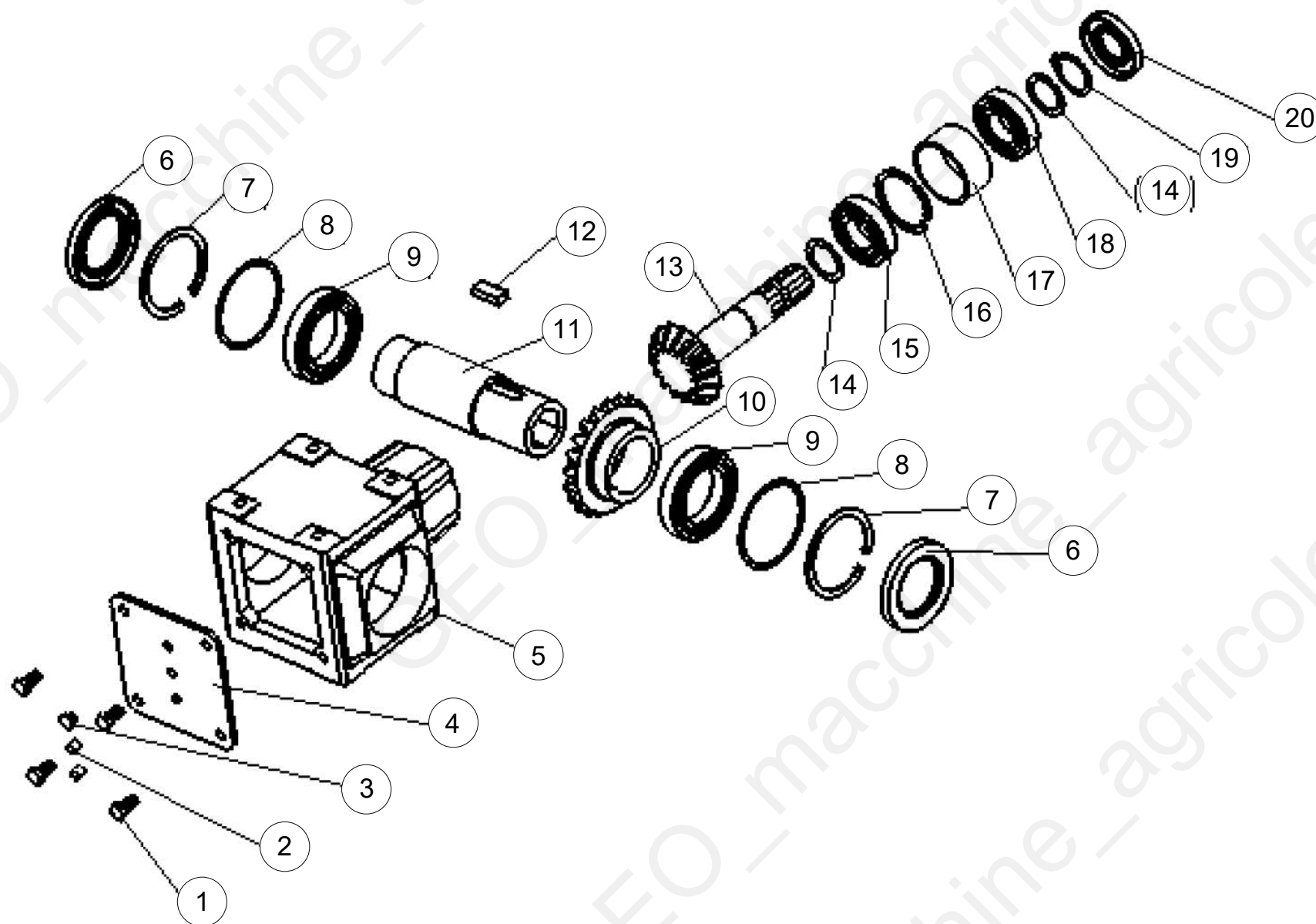
Page 26

Machine: SB

Assembly: SB\_parte 6



| Pos | Code      | Description | NOTE | Q. |
|-----|-----------|-------------|------|----|
| 20  | MZ105.020 | Bracket (R) |      | 1  |
| 21  | MZ105.015 | Bracket (L) |      | 1  |



Machine: SB

Assembly: SB\_parte 7



| Pos | Code                | Description                | NOTE | Q. |
|-----|---------------------|----------------------------|------|----|
| 1   | GB5783-86/M10x20    | Bolt M10x20                |      | 4  |
| 2   | GBW.001             | Plug 3/8"GAS               |      | 2  |
| 3   | 0.107.7100.00       | Vent plug                  |      | 1  |
| 4   | 0.267.1300.00       | Cover                      |      | 1  |
| 5   | 0.267.0500.00       | Case                       |      | 1  |
| 6   | GB13871-94-60X95X10 | Oil seal 60x95x10          |      | 2  |
| 7   | GB893.1-86/95       | Circlip 95                 |      | 2  |
| 8   | GBW.002             | Adjusting shim85.3x94.7    |      | 2  |
| 9   | GB/T276-94-6012     | Bearing 6012               |      | 2  |
| 10  | 0.267.6000.00       | Bevel gear                 |      | 1  |
| 11  | 0.267.4601.00       | Output shaft               |      | 1  |
| 12  | GB1096-B14x9x35     | Key B14x9x35               |      | 1  |
| 13  | 0.267.5001.00       | Shaf with gear             |      | 1  |
| 14  | GBW.003             | Adjusting shim35.3x48      |      | 2  |
| 15  | GB297-94/30207      | Bearing 30207              |      | 1  |
| 16  | GB893.1-84          | Retaining ring for hole 72 |      | 1  |
| 17  | 0.267.7100.00       | Sleeve                     |      | 1  |
| 18  | GB/T276-94-6207     | Bearing 6207               |      | 1  |
| 19  | GB894.1-86-35       | Circlip 35                 |      | 1  |
| 20  | GB13871-94-35x72x10 | Oil seal 35x72x10          |      | 1  |